



Chipsmall Limited consists of a professional team with an average of over 10 year of expertise in the distribution of electronic components. Based in Hongkong, we have already established firm and mutual-benefit business relationships with customers from,Europe,America and south Asia,supplying obsolete and hard-to-find components to meet their specific needs.

With the principle of “Quality Parts,Customers Priority,Honest Operation,and Considerate Service”,our business mainly focus on the distribution of electronic components. Line cards we deal with include Microchip,ALPS,ROHM,Xilinx,Pulse,ON,Everlight and Freescale. Main products comprise IC,Modules,Potentiometer,IC Socket,Relay,Connector.Our parts cover such applications as commercial,industrial, and automotives areas.

We are looking forward to setting up business relationship with you and hope to provide you with the best service and solution. Let us make a better world for our industry!



Contact us

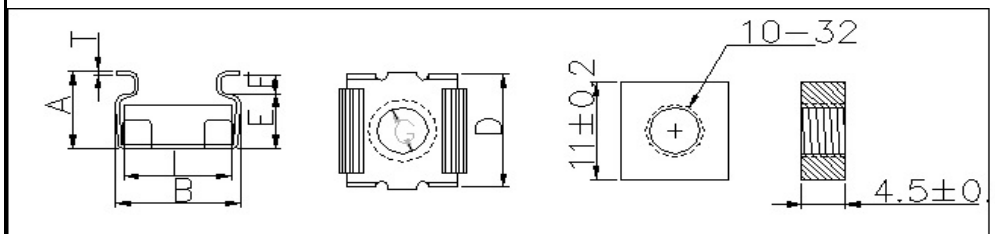
Tel: +86-755-8981 8866 Fax: +86-755-8427 6832

Email & Skype: info@chipsmall.com Web: www.chipsmall.com

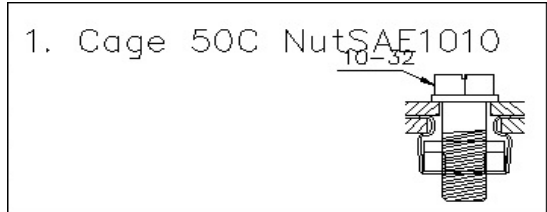
Address: A1208, Overseas Decoration Building, #122 Zhenhua RD., Futian, Shenzhen, China



Finished Products Inspection Report	Eason Tech Industrial Co., Ltd.	
		CageNuts 10-32



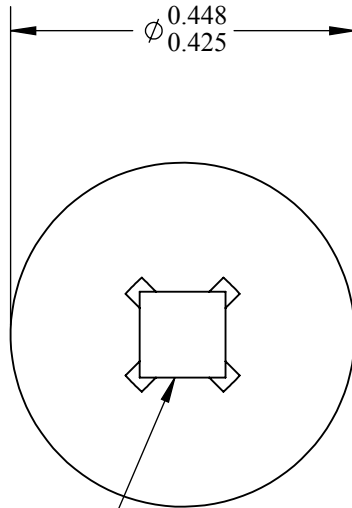
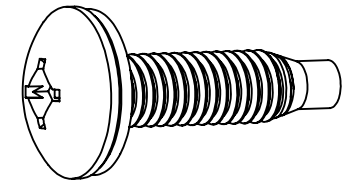
A	9.70±0.5
B	12.9±0.5
D	12.80±0.5
E	6.70±0.2
F	3.00±0.2
G	7.00±0.1
I	11.20±0.5
T	0.50±0.04
CageHRC38-42	



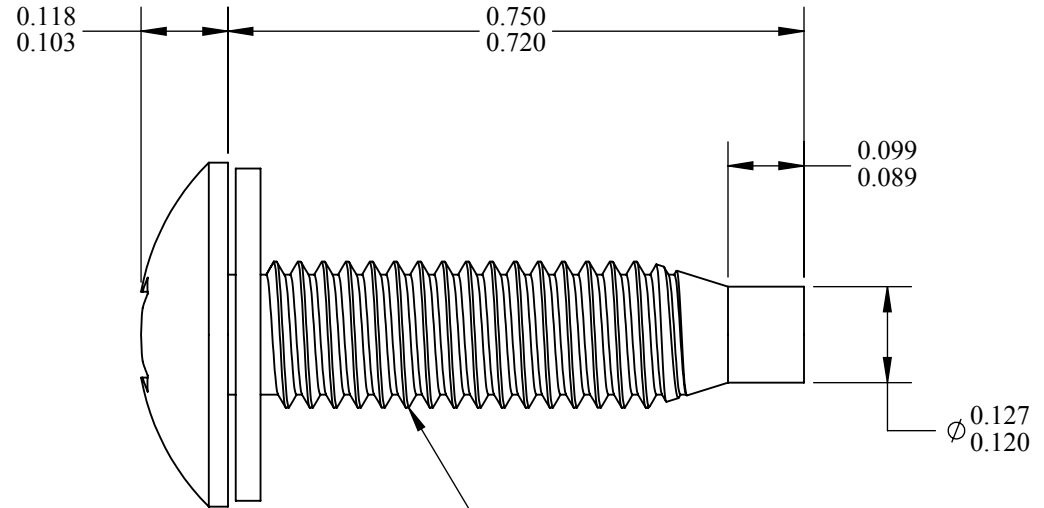
NOTES:

- 1) Screw Material: Low Carbon Steel
- 2) Screw Finish: Black Oxide
- 3) Washer Material: Black Nylon 6/6
- 4) Washer Outside Diameter: 0.429"-0.439"
- 5) Washer Thickness: 0.030"-0.040"
- 6) Must Be Heat Treated To ANSI B18.6.3 Spec
- 7) Must Be RoHS And Reach Compliant

REV	DESCRIPTION	DATE	DRAWN	CHECKED



#2R Type-III Square Recess
Penetration Gaging Depth: 0.060"-0.075"
#2 Type-I Phillips Cross Recess
Penetration Gaging Depth: 0.070"-0.093"



10-32 UNF-2A Thread

**CUSTOMER
SIGNATURE
REQUIRED**

ENDRIES DRAWN	NAME JJW	DATE 8/28/15	INTERPRET GEOMETRIC TOLERANCING PER: UNLESS OTHERWISE SPECIFIED: DIMENSIONS ARE IN INCHES TOLERANCES: FRACTIONAL ± ANGULAR: MACH ± BEND ± TWO PLACE DECIMAL ± THREE PLACE DECIMAL ±	TITLE: 10-32x3/4" Quadrex Truss Head Machine Screw Full Dog Point With Captive Flat Washer	 a WOLSELEY Industrial Group company		
ENDRIES CHECKED	NAME KDB	DATE 8/28/15	PROPRIETARY AND CONFIDENTIAL THE INFORMATION CONTAINED IN THIS DRAWING IS THE SOLE PROPERTY OF ENDRIES INTERNATIONAL. ANY REPRODUCTION IN PART OR AS A WHOLE WITHOUT THE PERMISSION OF ENDRIES INTERNATIONAL IS PROHIBITED.	MATERIAL See Notes		FINISH See Notes	
CUSTOMER SIGNATURE:			DO NOT SCALE DRAWING	UNSPECIFIED DIMENSIONS AND TOLERANCES PER: ASME B18.6.3	ENDRIES PART NUMBER:	DRAWING NUMBER: SCS19544QUAD	SIZE A
			SHEET: 1 of 1		WEIGHT:	SCALE:4:1	REV A