



Chipsmall Limited consists of a professional team with an average of over 10 year of expertise in the distribution of electronic components. Based in Hongkong, we have already established firm and mutual-benefit business relationships with customers from,Europe,America and south Asia,supplying obsolete and hard-to-find components to meet their specific needs.

With the principle of “Quality Parts,Customers Priority,Honest Operation,and Considerate Service”,our business mainly focus on the distribution of electronic components. Line cards we deal with include Microchip,ALPS,ROHM,Xilinx,Pulse,ON,Everlight and Freescale. Main products comprise IC,Modules,Potentiometer,IC Socket,Relay,Connector.Our parts cover such applications as commercial,industrial, and automotives areas.

We are looking forward to setting up business relationship with you and hope to provide you with the best service and solution. Let us make a better world for our industry!



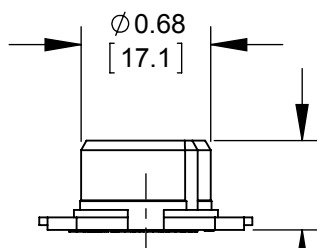
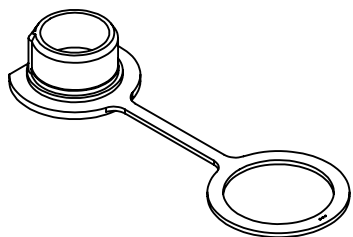
Contact us

Tel: +86-755-8981 8866 Fax: +86-755-8427 6832

Email & Skype: info@chipsmall.com Web: www.chipsmall.com

Address: A1208, Overseas Decoration Building, #122 Zhenhua RD., Futian, Shenzhen, China





0.19
[4.7]

Ø 1.02
[26.0]

Ø 0.54
[13.7]

0.11
[2.8]

Ø 0.87
[22.0]

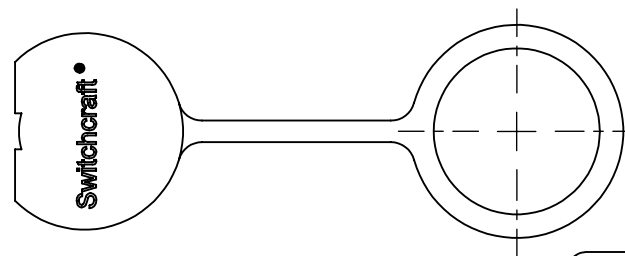
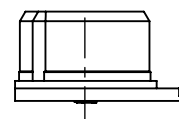
Ø 1.11
[28.2]

0.36
[9.2]

2.25
[57.2]

0.04
[1.0]

0.47 REF
[11.8]



CUSTOMER DRAWING

NOTES:

1. MATERIAL - BLACK THERMOPLASTIC ELASTOMER.
2. THIS PART MEETS IP67 WHEN PROPERLY MATED TO A SEALED "B" SERIES MALE CONNECTOR.
3. THIS PART IS ROHS COMPLIANT

					<div>UNLESS OTHERWISE SPECIFIED</div> <div>1. ALL DIMENSIONS IN INCHES</div> <div>- TWO PLACE DECIMALS ±0.02</div> <div>- THREE PLACE DECIMALS ±0.005</div>	THIS DRAWING DESCRIBES A DESIGN CONSIDERED PROPRIETARY IN NATURE, DEVELOPED AND MANUFACTURED BY SWITCHCRAFT INC. AND IS RELEASED ON A CONFIDENTIAL BASIS FOR IDENTIFICATION PURPOSES ONLY.						
						SIZE	WIDTH		MULT	LBS/M	TEMPER	
						FINISH				MATERIAL		SEE NOTES
						SPEC No.				SPEC No.		
						FIRST USED ON			SCALE		Switchcraft®	
									1:1			
A	RELEASED 27511	6-24-15	SRC	TJK	DATE DRAWN	BY	CHKD	APVD				
					10-14-14	SRC	10-14-14	8-12-15				
							SRC	TJK				
REV	ECO NUMBER	DATE	BY	APVD		NAME				PART No.	REV	
REVISIONS					DO NOT SCALE DRAWING	SEALED "B" SERIES MALE CAP				CAPMSB	A	

UNLESS OTHERWISE SPECIFIED

1. ALL DIMENSIONS IN INCHES
- TWO PLACE DECIMALS ±0.02
- THREE PLACE DECIMALS ±0.005

DO NOT SCALE DRAWING

SolidWorks CAD File

