



Chipsmall Limited consists of a professional team with an average of over 10 year of expertise in the distribution of electronic components. Based in Hongkong, we have already established firm and mutual-benefit business relationships with customers from,Europe,America and south Asia,supplying obsolete and hard-to-find components to meet their specific needs.

With the principle of "Quality Parts,Customers Priority,Honest Operation,and Considerate Service",our business mainly focus on the distribution of electronic components. Line cards we deal with include Microchip,ALPS,ROHM,Xilinx,Pulse,ON,Everlight and Freescale. Main products comprise IC,Modules,Potentiometer,IC Socket,Relay,Connector.Our parts cover such applications as commercial,industrial, and automotives areas.

We are looking forward to setting up business relationship with you and hope to provide you with the best service and solution. Let us make a better world for our industry!



Contact us

Tel: +86-755-8981 8866 Fax: +86-755-8427 6832

Email & Skype: info@chipsmall.com Web: www.chipsmall.com

Address: A1208, Overseas Decoration Building, #122 Zhenhua RD., Futian, Shenzhen, China



THIS COPY IS PROVIDED ON A RESTRICTED BASIS AND IS NOT TO BE USED IN ANY WAY DETRIMENTAL TO THE INTERESTS OF PANDUIT CORP.

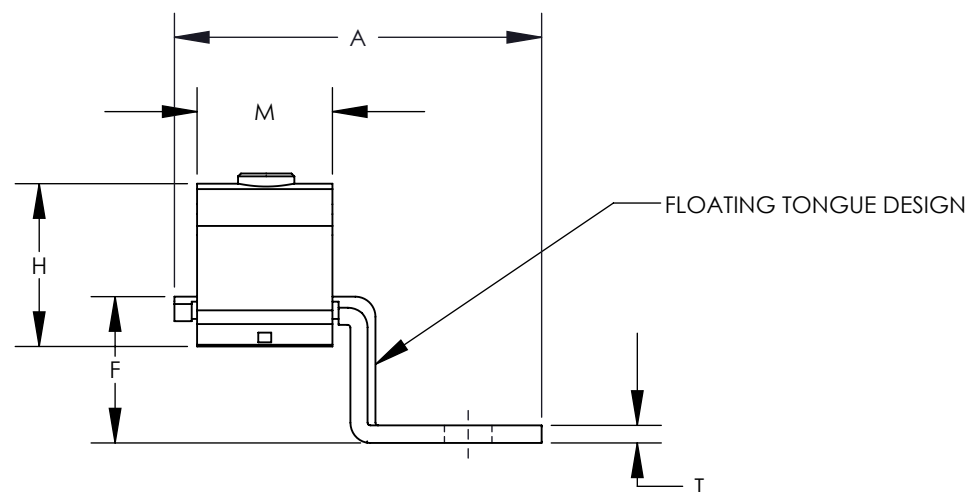
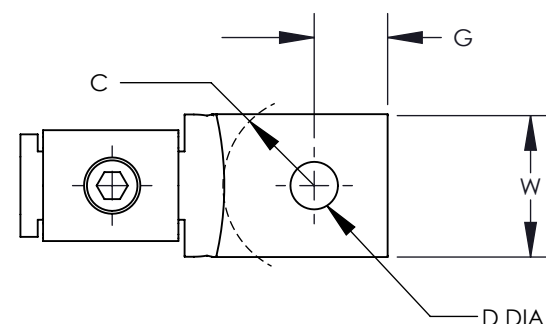
PART NUMBER	WIRE RANGE COPPER	CURRENT RATING (AMPS)	STUD SIZE IN	DIMENSIONS - IN [mm] ± .02 [0.5]									HEX KEY*
				A	D DIA	W	G	C	T	F	H	M	
CB25-18-CY	#14-#10	25	1/8	1.00 [25.4]	0.14 [3.6]	.31 [7.9]	.20 [5.1]	.28 [7.1]	.07 [1.8]	.26 [6.6]	0.36 [9.1]	0.28 [7.1]	SLOTTED SCREW
CB35-36-CY	#14-#6 (2) #10 AWG (2) #12 AWG (2) #14 AWG (1) #10 AWG WITH (1) #12 AWG (1) #12 AWG WITH (1) #14 AWG	50	3/16	1.24 [31.5]	0.19 [4.8]	.38 [9.7]	.22 [5.6]	.30 [7.6]	.07 [1.8]	.43 [10.9]	0.49 [12.4]	0.43 [10.9]	SLOTTED SCREW
CBA70-14SL-CY	#14-#4	70	1/4	1.31 [33.3]	0.26 [6.6]	.50 [12.7]	.25 [6.4]	.48 [12.2]	.08 [2.0]	.40 [10.1]	0.64 [16.3]	0.50 [12.7]	SLOTTED SCREW
CB70-14-CY	#8-#2 (1) #8 AWG WITH (1) #4 AWG (1) #8 AWG WITH (1) #6 AWG	90	1/4	1.55 [39.4]	0.26 [6.6]	.47 [11.9]	.25 [6.4]	.47 [11.9]	.08 [2.0]	.52 [13.2]	0.64 [16.3]	0.50 [12.7]	SLOTTED SCREW
CB125-14-QY	#6-1/0	125	1/4	1.98 [50.3]	0.26 [6.6]	.62 [15.7]	.42 [10.7]	.50 [12.7]	.11 [2.7]	.74 [18.7]	0.88 [22.4]	0.60 [15.2]	SLOTTED SCREW
CB175-38-QY	#4-3/0	175	3/8	2.20 [55.9]	0.39 [9.9]	.75 [19.0]	.43 [10.9]	.63 [16.0]	.12 [3.0]	.78 [19.8]	1.01 [25.7]	0.72 [18.3]	3/16
CB225-56HKR-Q	#2-4/0	225	5/16	2.55 [64.8]	0.33 [8.4]	.99 [25.1]	.51 [13.0]	.70 [17.8]	.12 [3.1]	1.02 [25.8]	1.13 [28.7]	0.94 [23.9]	7/32
CB300-38-QY	1/0-350	300	3/8	2.83 [71.9]	0.39 [9.9]	.99 [25.1]	.51 [13.0]	.70 [17.8]	.12 [3.1]	1.03 [26.2]	1.39 [35.3]	1.23 [31.2]	5/16
CB400-38-3Y	1/0-500	400	3/8	4.09 [103.9]	0.39 [9.9]	1.50 [38.0]	.90 [22.9]	1.15 [29.2]	.18 [4.5]	1.39 [35.3]	1.61 [40.9]	1.41 [35.8]	5/16
CB650-12-3Y	600-1000	650	1/2	4.84 [122.9]	0.59 [15.0]	2.00 [50.8]	1.12 [28.4]	1.07 [27.2]	.25 [6.4]	1.97 [50.0]	2.32 [58.9]	1.85 [47.0]	3/8

NOTES:

- MATERIAL:
BODY - COPPER
SCREW - STEEL, ZINC PLATED
- cULus LISTED FOR USE UP TO 600V & TEMPERATURE RATED 90°C
- RATED FOR USE WITH COPPER STRANDED CODE CONDUCTOR ONLY
- THESE PARTS ARE RoHS COMPLIANT
- SEE PACKAGING LABEL FOR TIGHTENING TORQUE INFORMATION
- PKG QTY:
C = 100
Q = 25
3 = 3



* HEX STYLE & SIZE MAY DIFFER FROM CHART. DIFFERENCE IN SIZE WILL NOT AFFECT FIT, FORM, OR FUNCTION OF PART



REV	DATE	BY	CHK	APR	DESCRIPTION	ECN
11	8/16	JHNU	JHNU	RGB	REVISED DIMENSION T FOR CB175-38-QY: .12 [3.0] WAS .16 [4.0]	N41663BA-C41663
10	8/16	JHNU	JHNU	RGB	ADDED CB225-56HKR-Q, REMOVED CB225-56-QY	N41663BA-C41663
09	11/13	JHNU	JHNU	RGB	REMOVED L DIMENSION REVISED W DIMENSION FOR CB70-14-CY: .47 WAS .50	N41663BA-C41663
08	2/13	JHNU	JHNU	RGB	REVISED TITLE BLOCK	N41663BA-C41663

TITLE CB SERIES COPPER MECHANICAL LUGS CUSTOMER DRAWING	
ITEM REVISION NAME N41663BA-C41663/11	PANDUIT
DATASET FILE NAME C41663/11.SLDDRW	
UNLESS OTHERWISE SPECIFIED, DIMENSIONAL TOLERANCES ARE: IN [mm]	
.X ± .XXX ± .XX ± ANGLES ±	MATERIAL SEE NOTES
THIRD ANGLE PROJECTION	DRAWING NUMBER C41663
DRAWN BY JHNU	DATE 3/06
CHK JHNU	SCALE NONE
SHEET 1 OF 1	SIZE B