



Chipsmall Limited consists of a professional team with an average of over 10 year of expertise in the distribution of electronic components. Based in Hongkong, we have already established firm and mutual-benefit business relationships with customers from,Europe,America and south Asia,supplying obsolete and hard-to-find components to meet their specific needs.

With the principle of “Quality Parts,Customers Priority,Honest Operation,and Considerate Service”,our business mainly focus on the distribution of electronic components. Line cards we deal with include Microchip,ALPS,ROHM,Xilinx,Pulse,ON,Everlight and Freescale. Main products comprise IC,Modules,Potentiometer,IC Socket,Relay,Connector.Our parts cover such applications as commercial,industrial, and automotives areas.

We are looking forward to setting up business relationship with you and hope to provide you with the best service and solution. Let us make a better world for our industry!



Contact us

Tel: +86-755-8981 8866 Fax: +86-755-8427 6832

Email & Skype: info@chipsmall.com Web: www.chipsmall.com

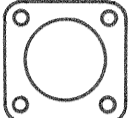
Address: A1208, Overseas Decoration Building, #122 Zhenhua RD., Futian, Shenzhen, China



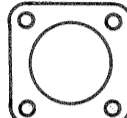
ASSEMBLY NUMBER	CB NUMBER	A THREAD PLATED CLASS 2A	B MIN FULL THD	C +.016 -.047	K +.020 -.010	L	M +.010 -.000	R ±.005	S	T DIA +.004 -.002	V THREAD PLATED CLASS 2A	Z +.050 -.060
10-68308-		NOT AVAILABLE										
10-68310-	3100-10S-	.6250-24 NEF	.391	.492	.672	.969	.563	.719	1.000	.120	.5000-28 UNEF	.422
10-68311-	-10SL-	.6250-24 NEF	.391	↓	↓	↓	.562	.719	1.000		.6250-24 NEF	↓
10-68312-	-12S-	.7500-20 UNEF	.450	↓	↓	↓	.563	.812	1.094		.6250-24 NEF	↓
10-68313-	-12-	.7500-20 UNEF	.625	.679	.860	1.344	.750	.812	1.094		.6250-24 NEF	.672
10-68314-	-14S-	.8750-20 UNEF	.450	.492	.672	.969	.563	.906	1.188		.7500-20 UNEF	.422
10-68315-	-14-	.8750-20 UNEF	.625	.679	.860	1.344	.750	.906	1.188		.7500-20 UNEF	.672
10-68316-	-16S-	1.0000-20 UNEF	.450	.492	.672	.969	.562	.969	1.281		.8750-20 UNEF	.422
10-68317-	-16-	1.0000-20 UNEF	.625	.679	.860	1.344	.750	.969	1.281		.8750-20 UNEF	.672
10-68318-	-18-	1.1250-18 NEF			.891	1.344		1.063	1.375		1.0000-20 UNEF	.641
10-68320-	-20-	1.2500-18 NEF			↓	↓	↓	1.156	1.500		1.1250-18 NEF	↓
10-68322-	-22-	1.3750-18 NEF			↓	↓	↓	1.250	1.625		1.2500-18 NEF	↓
10-68324-	-24-	1.5000-18 NEF			.953	1.406	.813	1.375	1.750	.147	1.3750-18 NEF	.578
10-68328-	-28-	1.7500-18 NS			.953	1.406	.812	1.562	2.000	.147	1.6250-18 NEF	.578
10-68332-	-32-	2.0000-18 NS			1.032	1.469	.875	1.750	2.250	.173	1.8750-16 N	.500
10-68336-	-36-	2.2500-16 UN			1.031	1.469	.875	1.938	2.500	.173	2.0625-16 N	.500
10-68340-		NOT AVAILABLE										

REL NO 30508-99		REVISIONS		
CHG NO.	SYM	DESCRIPTION	DATE	APPROVED
38525-471	A2	PROVIDED SERIES COMPOSITE DRAWING REPLACING SHELL SIZE COMPOSITE DRAWINGS	3-7-62	K HISCOTT
42762-1	A3	WAS TEST 9-3107-3 & ASSY 9-3104-1 (PRO SPEC); REV NOTE 8	3-12-64	Randall Haye
47525-818	A4	ADDED THERMO & COAXIAL DATA BLOCK, SPECIAL & THERMO. SOLDER WELL DATA; DISCARDED INDIVIDUAL DWGS 10-68312-51 & -54	7-14-67	Whitney

ACCESSORIES
(NOT PART OF STANDARD ASSEMBLY)



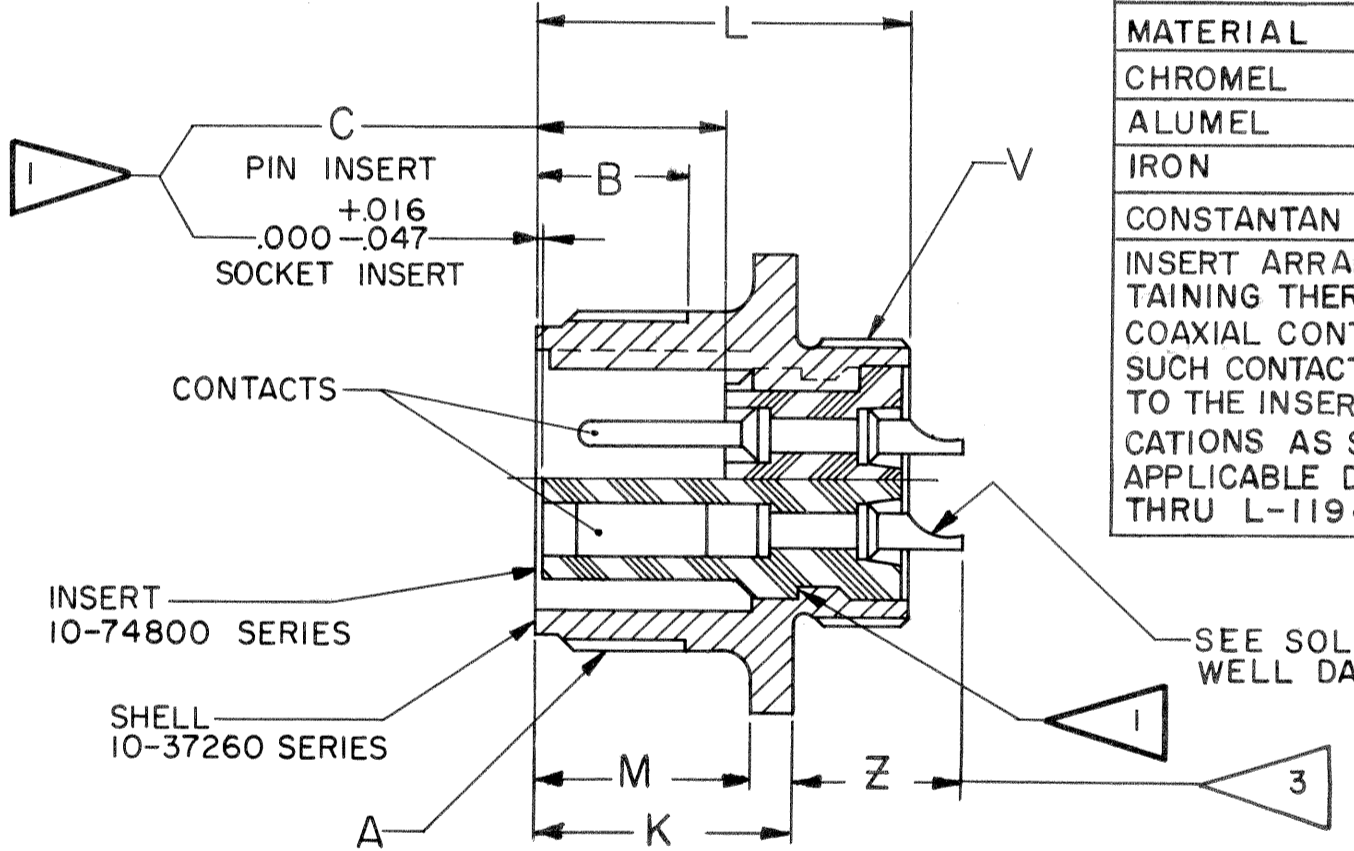
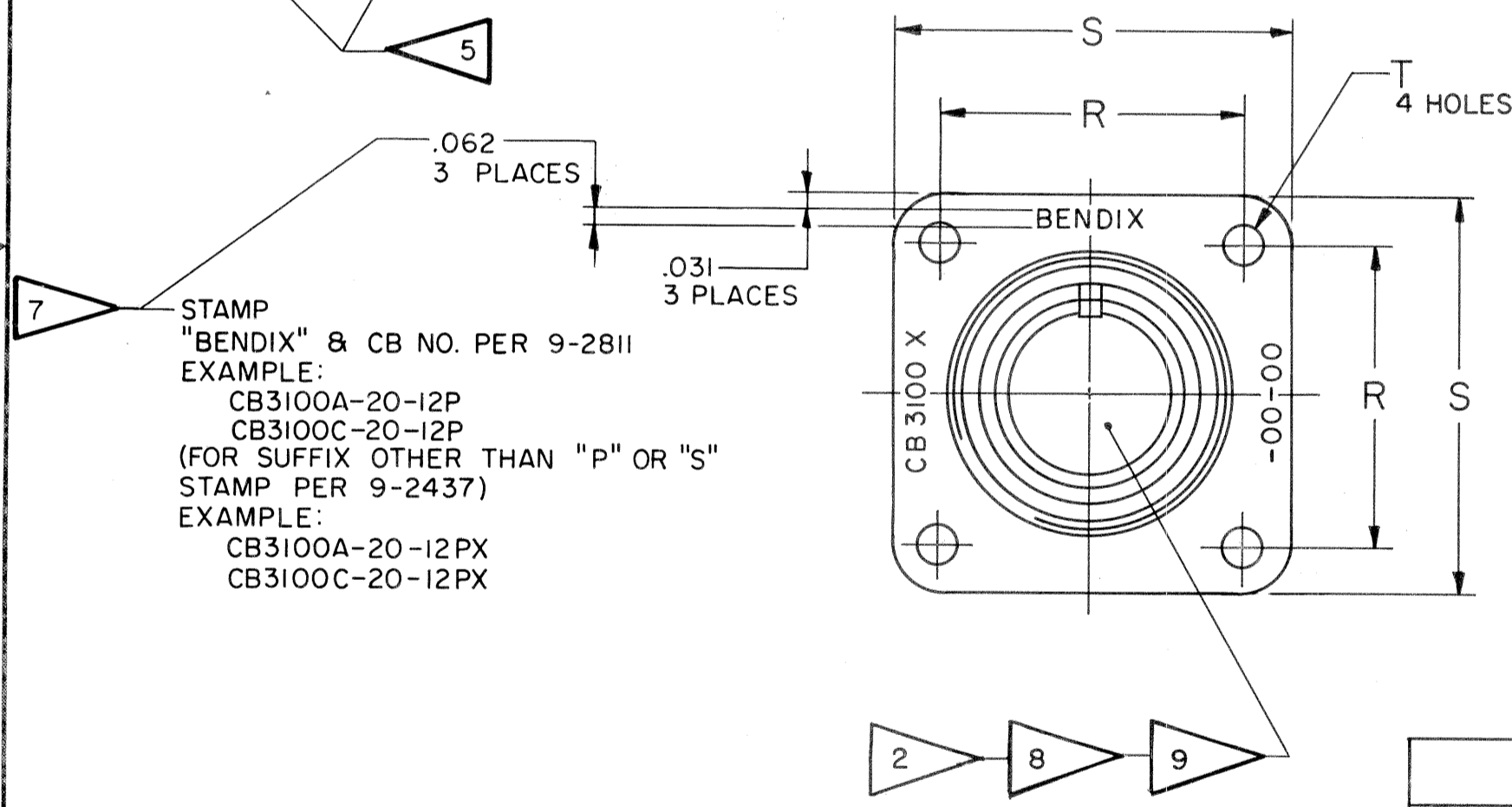
FLANGE GASKET,
PLAIN
10-40450 - (SHELL SIZE)



FLANGE GASKET,
SHIELDED
10-40450 - (SHELL SIZE)S

CONTACT DATA (WHERE APPLICABLE)

THERMOCOUPLE		COAXIAL	
MATERIAL	IDENTIFICATION	ARR	CABLE
CHROMEL	WHITE		
ALUMEL	GREEN		
IRON	BLACK		
CONSTANTAN	YELLOW		
INSERT ARRANGEMENTS CONTAINING THERMOCOUPLE OR COAXIAL CONTACTS MUST HAVE SUCH CONTACTS ASSEMBLED INTO THE INSERT IN PROPER LOCATIONS AS SPECIFIED BY APPLICABLE DRAWING L-11908-() THRU L-11943-().			



- SEE WORK ORDER FOR PERMISSIBLE ADDITIONAL OR ALTERNATE STAMPING.
- UNITS ILLUSTRATED MEET THE MATERIAL & FINISH REQUIREMENTS OF MIL-C-5015D.
- TO COMPLETE ASSEMBLY NUMBER & CB NO. ADD APPLICABLE INSERT ARRANGEMENT SUFFIX TO BASE NUMBERS LISTED ABOVE. (FOR ALTERNATE ARRANGEMENT REFER TO 9-2437). TO DETERMINE DESIRED INSERT ARRANGEMENT, SEE PARTS LISTS 10-68308/40.
- SEE DRAWINGS 10-68608/40 & OTHERS FOR REQUIRED MATING PLUG ASSEMBLIES.
- INCREASE Z DIMENSION BY .312 FOR SIZE "0" CONTACT ONLY.
- FOR CONTACT SIZE, SPACING & SERVICE RATING, SEE DRAWINGS AND10425 THRU AND10435.
- DIMENSIONS MUST BE MAINTAINED WHEN INSERTS ARE PRESSED FIRMLY AGAINST INDICATED SHOULDER.

CONTACT SIZE	STANDARD SOLDER WELL DATA					SPECIAL SOLDER WELL DATA			THERMOCOUPLE	
	0	4	8	12	16	8 FOR #6 WIRE	12 FOR #10 WIRE	16 FOR #12 WIRE	12	16
WELL DIA	.469 ^{+.005} _{-.003}	.332 ^{+.005} _{-.003}	.209 ^{+.004} _{-.002}	.116 ^{+.004} _{-.002}	.078 ^{+.004} _{-.002}	.250±.003	.152 ^{+.004} _{-.002}	.109 ^{+.004} _{-.000}	.125 ^{+.004} _{-.002}	.094 ^{+.004} _{-.002}
WELL DEPTH	.625	.625	.500	.375	.250	.500	.250	.188	.250	.188

UNLESS OTHERWISE SPECIFIED
LINEAR DIMENSIONS ARE IN INCHES.
TOLERANCES: 3 PLACES ±.010;
2 PLACES ±.03; 1 PLACE ±.1;
ANGLES ±2°. OTHER STANDARDS PER SCINTILLA SPEC 9-3800 AND MIL-STD 8.

ITEM NO. QTY REQD DESCRIPTION PART NUMBER CODE IDENT ZONE

PARTS LIST

DRAWN: J. RUSSO DATE: 12-26-61
CHECKED: R. Black DATE: 12-28-61
MATERIAL:

STANDARDS: f. Balantieri 12-29-61
DRAFTING: R. Black 12-29-61
ENGINEERING: J. M. Jamney 12-29-61
DEVELOPMENT:

PROCESS SPEC TEST 9-3106-5 9-3106-4 ASSY 9-3103-1 9-3238-1 SEE NOTES 8&9 9-2437,9-2811

THE Bendix CORPORATION SCINTILLA DIVISION SIDNEY, NEW YORK, U.S.A.

TITLE: CONNECTOR, ELECTRICAL RECEPTACLE, TYPE CB ()FW

CODE IDENT NO. SIZE 77820 C 10-68308 THRU 10-68340

SCALE NONE WT SEE PARTS LIST REF 10-41308/40 SHEET

- ALL 10- & 61- ASSEMBLIES TO BE ASSEMBLED PER 9-3103-1 AND TESTED PER 9-3106-5. INSERTS AND CONTACTS ARE REMOVABLE.
- ALL 62- ASSEMBLIES TO BE ASSEMBLED PER 9-3238-1 AND TESTED PER 9-3106-4. INSERTS AND CONTACTS ARE NOT REMOVABLE.