



Chipsmall Limited consists of a professional team with an average of over 10 year of expertise in the distribution of electronic components. Based in Hongkong, we have already established firm and mutual-benefit business relationships with customers from,Europe,America and south Asia,supplying obsolete and hard-to-find components to meet their specific needs.

With the principle of "Quality Parts,Customers Priority,Honest Operation,and Considerate Service",our business mainly focus on the distribution of electronic components. Line cards we deal with include Microchip,ALPS,ROHM,Xilinx,Pulse,ON,Everlight and Freescale. Main products comprise IC,Modules,Potentiometer,IC Socket,Relay,Connector.Our parts cover such applications as commercial,industrial, and automotives areas.

We are looking forward to setting up business relationship with you and hope to provide you with the best service and solution. Let us make a better world for our industry!



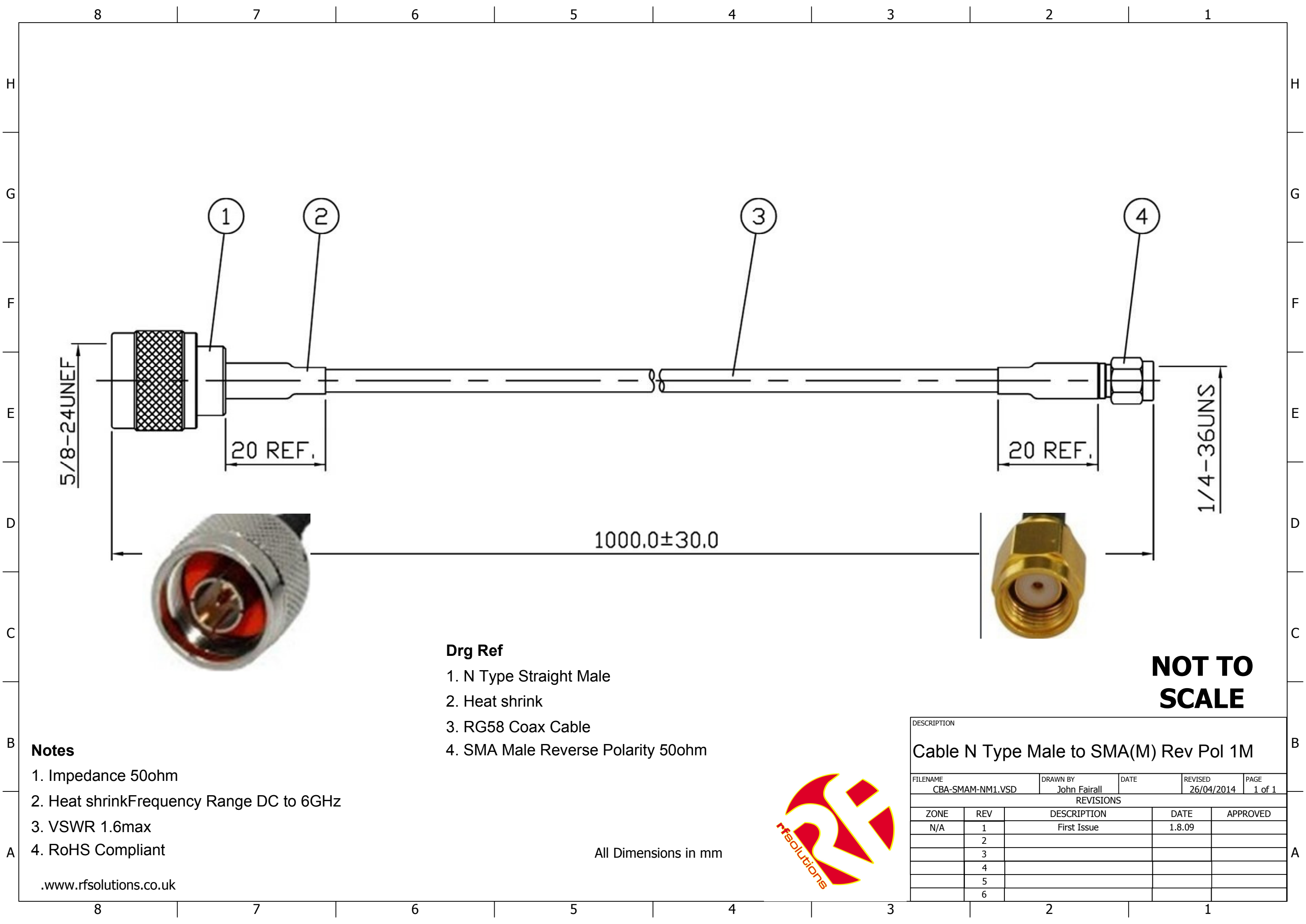
Contact us

Tel: +86-755-8981 8866 Fax: +86-755-8427 6832

Email & Skype: info@chipsmall.com Web: www.chipsmall.com

Address: A1208, Overseas Decoration Building, #122 Zhenhua RD., Futian, Shenzhen, China





- Drg Ref**
1. N Type Straight Male
 2. Heat shrink
 3. RG58 Coax Cable
 4. SMA Male Reverse Polarity 50ohm

NOT TO SCALE

- Notes**
1. Impedance 50ohm
 2. Heat shrink Frequency Range DC to 6GHz
 3. VSWR 1.6max
 4. RoHS Compliant

All Dimensions in mm

.www.rfsolutions.co.uk



DESCRIPTION				
Cable N Type Male to SMA(M) Rev Pol 1M				
FILENAME	DRAWN BY	DATE	REVISED	PAGE
CBA-SMAM-NM1.VSD	John Fairall		26/04/2014	1 of 1
REVISIONS				
ZONE	REV	DESCRIPTION	DATE	APPROVED
N/A	1	First Issue	1.8.09	
	2			
	3			
	4			
	5			
	6			