



Chipsmall Limited consists of a professional team with an average of over 10 year of expertise in the distribution of electronic components. Based in Hongkong, we have already established firm and mutual-benefit business relationships with customers from,Europe,America and south Asia,supplying obsolete and hard-to-find components to meet their specific needs.

With the principle of “Quality Parts,Customers Priority,Honest Operation,and Considerate Service”,our business mainly focus on the distribution of electronic components. Line cards we deal with include Microchip,ALPS,ROHM,Xilinx,Pulse,ON,Everlight and Freescale. Main products comprise IC,Modules,Potentiometer,IC Socket,Relay,Connector.Our parts cover such applications as commercial,industrial, and automotives areas.

We are looking forward to setting up business relationship with you and hope to provide you with the best service and solution. Let us make a better world for our industry!



Contact us

Tel: +86-755-8981 8866 Fax: +86-755-8427 6832

Email & Skype: info@chipsmall.com Web: www.chipsmall.com

Address: A1208, Overseas Decoration Building, #122 Zhenhua RD., Futian, Shenzhen, China

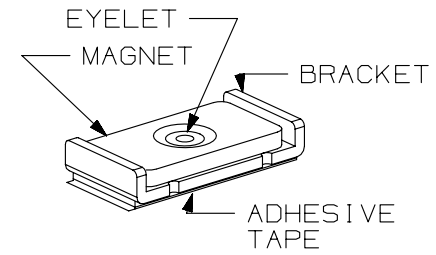
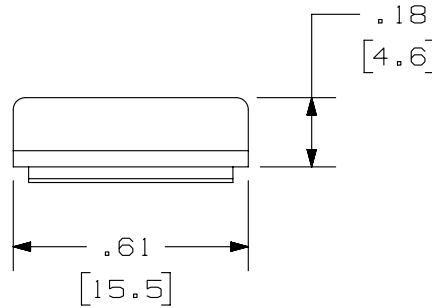
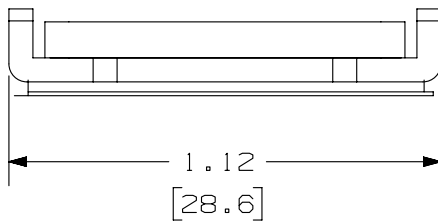
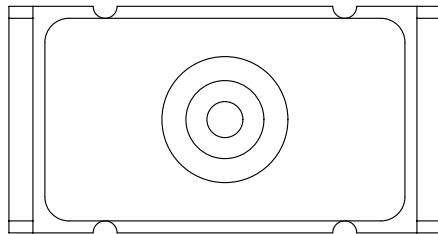


THIS COPY IS PROVIDED ON A RESTRICTED BASIS AND IS NOT TO BE USED IN ANY WAY DETRIMENTAL TO THE INTERESTS OF PANDUIT CORP.

PANDUIT P/N	WEIGHT
CBM-X	.208 LB/10 PCS (94.3 g/10 PCS)

NOTES:

- SEE CURRENT CATALOG FOR ADDITIONAL PART NUMBER SUFFIXES TO INDICATE PACKAGE QUANTITY.
- CAN BE USED WITH VARIOUS TYPES OF PANDUIT SURFACE MOUNT BOXES APPLIED TO METAL SURFACES.
- ADHESIVE PRESSURE SENSITIVE FOAM .040 (1.0) THICK WITH PROTECTIVE LINER IS PROVIDED FOR EASE OF MOUNTING ON APPLICABLE PANDUIT SURFACE BOXES.
- DIMENSIONS IN [] ARE IN METRIC.



PART NUMBER		CBM-X	
TITLE			
MAGNET WITH ADHESIVE BACKING			
CUSTOMER DRAWING			
ITEM REVISION NAME		D35543BF/00	
DATASET FILE NAME		D35543BF_DC/00C	
UNLESS OTHERWISE SPECIFIED, DIMENSIONAL TOLERANCES ARE: IN [mm]		PANDUIT MATERIAL: DRAWING NUMBER: 35543-06	
.x ± .1 [2.54] .xxx ± .005 [.127] .xx ± .01 [.25] ANGLES ± 5 °			
		THIRD ANGLE PROJECTION	
DRAWN BY	DATE	CHK	SCALE
DW	5-03-96	CEF	NONE
REV		SHT 1 OF 1	
DATE		SIZE	
		A	

REV	DATE	BY	CHK	APR	DESCRIPTION	ECN
2	3/10/14	JSP	REFR	MMR	B. REVISED DRAWING TITLE BLOCK.	35543-06
1	11-12-98	JSP	CEF	CEF	A. REVISED NOTE 2 AND 3.	35543-06
R	5-03-96	DW	CEF	CEF	RELEASED TO PRODUCTION	35543-06

D10100DA/14