



Chipsmall Limited consists of a professional team with an average of over 10 year of expertise in the distribution of electronic components. Based in Hongkong, we have already established firm and mutual-benefit business relationships with customers from,Europe,America and south Asia,supplying obsolete and hard-to-find components to meet their specific needs.

With the principle of “Quality Parts,Customers Priority,Honest Operation,and Considerate Service”,our business mainly focus on the distribution of electronic components. Line cards we deal with include Microchip,ALPS,ROHM,Xilinx,Pulse,ON,Everlight and Freescale. Main products comprise IC,Modules,Potentiometer,IC Socket,Relay,Connector.Our parts cover such applications as commercial,industrial, and automotives areas.

We are looking forward to setting up business relationship with you and hope to provide you with the best service and solution. Let us make a better world for our industry!



## Contact us

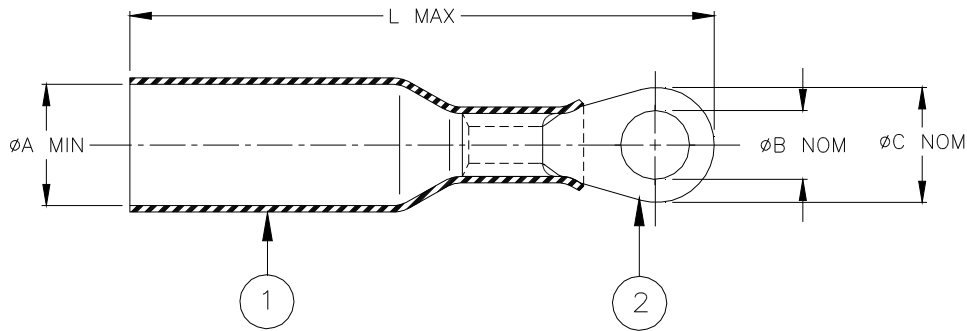
Tel: +86-755-8981 8866 Fax: +86-755-8427 6832

Email & Skype: info@chipsmall.com Web: www.chipsmall.com

Address: A1208, Overseas Decoration Building, #122 Zhenhua RD., Futian, Shenzhen, China



## CUSTOMER DRAWING



Product Name	Product Dimensions				Wire Dimensions			
	ØA min	ØB nom	ØC nom	L max	Color (1)	Conductor mm <sup>2</sup> (AWG)	ØG	
							min	max
B-106-1401	4.0 [0.160]	4.3 [0.170]	8.0 [0.315]	32.0 [1.260]	Red	0.5 - 1.0 (AWG 22-18)	1.4 [0.055]	4.0 [0.160]
B-106-1501		5.3 [0.210]	10.0 [0.395]	34.0 [1.340]				
B-106-1601		6.5 [0.255]	10.0 [0.395]	36.0 [1.420]				
B-106-1801		8.4 [0.330]	14.0 [0.550]	39.0 [1.535]				
B-106-1991		10.5 [0.415]	18.0 [0.710]	43.0 [1.695]				
B-106-1402	4.6 [0.180]	4.3 [0.170]	8.0 [0.315]	33.0 [1.300]	Blue	1.5 - 2.5 (AWG 16-14)	2.0 [0.080]	4.6 [0.180]
B-106-1502		5.3 [0.210]	10.0 [0.395]	33.0 [1.300]				
B-106-1502-S		5.3 [0.210]	8.0 [0.315]	32.0 [1.260]				
B-106-1602		6.5 [0.255]	11.0 [0.435]	36.5 [1.440]				
B-106-1802		8.4 [0.330]	14.0 [0.550]	40.0 [1.575]				
B-106-1992		10.5 [0.415]	18.0 [0.710]	44.0 [1.735]				
B-106-1403	6.5 [0.255]	4.3 [0.170]	8.0 [0.315]	38.0 [1.495]	Yellow	3.0 - 6.0 (AWG 12-10)	2.8 [0.110]	6.5 [0.255]
B-106-1503		5.3 [0.210]	10.0 [0.395]	40.0 [1.575]				
B-106-1603		6.5 [0.255]	11.0 [0.435]	41.5 [1.635]				
B-106-1803		8.4 [0.330]	14.0 [0.550]	45.0 [1.770]				
B-106-1993		10.5 [0.415]	18.0 [0.710]	47.0 [1.850]				

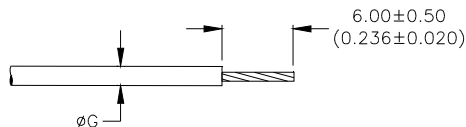
### MATERIALS

1. INSULATION SLEEVE: Heat-shrinkable, transparent color (1), radiation cross-linked modified polyamide with thermoplastic adhesive coating inside.
2. RING TERMINAL: Tin plated copper alloy.

### APPLICATION

1. These controlled crimp devices are designed to terminate a tin plated or bare copper stranded wire having an insulation rated for at least 75°C to a ring terminal. It will provide a splash proof and strain relief connection.  
UL listed wire connection 91J4.
2. Temperature range: -55°C to +125°C.
3. For application tooling and installation, see RPIP-684-00.

For best results, prepare the wire as shown:



		300 Constitution Dr Menlo Park, CA 94025, U.S.A.	TITLE: <b>DURASEAL RING TERMINAL</b>		
Unless otherwise specified dimensions are in millimeters. [Inches dimensions are shown in brackets]		Raychem Devices	DOCUMENT NO.: <b>B-106-1XXX</b>		
TOLERANCES: 0.00 N/A 0.0 N/A 0 N/A	ANGLES: N/A  ROUGHNESS IN MICRON	TE Connectivity reserves the right to amend this drawing at any time. Users should evaluate the suitability of the product for their application.	REV: <b>B1</b>	DATE: <b>April 15, 2011</b>	
REVISED BY: <b>HMR</b>	CAGE CODE: <b>06090</b>	ECO NUMBER: <b>ECO-11-005139</b>	SCALE: <b>NTS</b>	SIZE: <b>A</b>	SHEET: <b>1 of 1</b>

© 2006.2011 Tyco Electronics Corporation, a TE Connectivity Ltd. Company. All Rights Reserved.

If this document is printed it becomes uncontrolled. Check for the latest revision.