



Chipsmall Limited consists of a professional team with an average of over 10 year of expertise in the distribution of electronic components. Based in Hongkong, we have already established firm and mutual-benefit business relationships with customers from,Europe,America and south Asia,supplying obsolete and hard-to-find components to meet their specific needs.

With the principle of "Quality Parts,Customers Priority,Honest Operation,and Considerate Service",our business mainly focus on the distribution of electronic components. Line cards we deal with include Microchip,ALPS,ROHM,Xilinx,Pulse,ON,Everlight and Freescale. Main products comprise IC,Modules,Potentiometer,IC Socket,Relay,Connector.Our parts cover such applications as commercial,industrial, and automotives areas.

We are looking forward to setting up business relationship with you and hope to provide you with the best service and solution. Let us make a better world for our industry!



Contact us

Tel: +86-755-8981 8866 Fax: +86-755-8427 6832

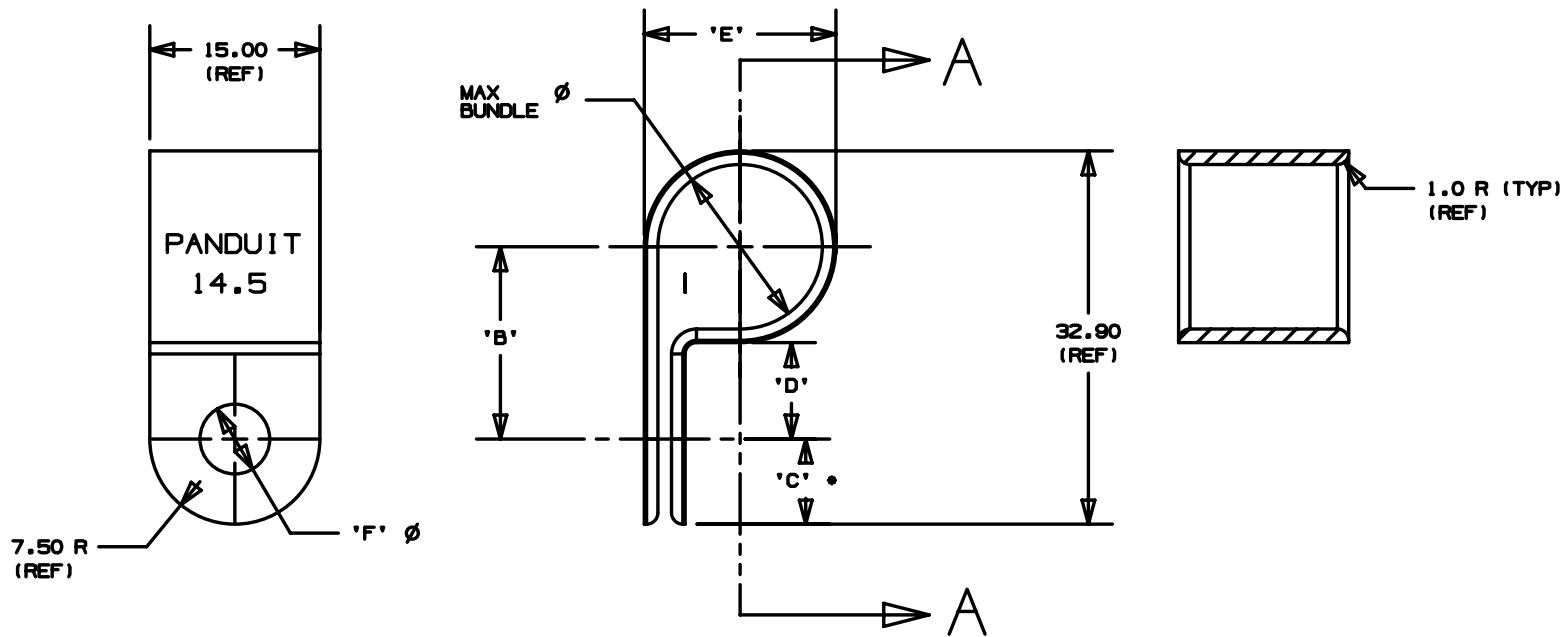
Email & Skype: info@chipsmall.com Web: www.chipsmall.com

Address: A1208, Overseas Decoration Building, #122 Zhenhua RD., Futian, Shenzhen, China



THIS COPY IS PROVIDED ON A RESTRICTED BASIS AND IS NOT TO BE USED IN ANY WAY DETRIMENTAL TO THE INTERESTS OF PANDUIT CORP.

PANDUIT PART NO.	MAXIMUM BUNDLE DIA.	DIMENSIONS (TOL: ±.5)					WEIGHT grams / 100 pcs
		'B'	'C'	'D'	'E'	'F'	
CCH57-S12-_30	14.5	16.5	8	8	16.9	6.2	120

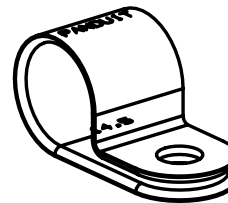


SECTION A-A

DIMENSIONS ARE METRIC [mm]	
CAD FILENAME/LAYERS	G01932BK_PB_CCH57S12_02
CORP. TINLEY PARK, ILLINOIS	
FIXED CABLE CLAMP	
Unless otherwise specified, all dimensions are metric tolerance; ±0.5mm	
DRAWN BY JAD	MAT'L: NONE
DATE 4/28/03	SEE NOTE 1
CHK'D	DWG NO. GB1932BK
	DWG SIZE A

NOTES:

- SEE CURRENT PRICE SHEET FOR PART NUMBER SUFFIX DESIGNATION FOR PACKAGE SIZE AND COLOR.
- MATERIAL: HEAT STABILIZED NYLON 6/6
- COLOR: BLACK
- MOUNTING:
HOLE DIAMETER: 6.2
SCREW SIZE: M6



SCALE: FULL

2	4/28/03	JAD		COMPLETELY REVISED REMOVED GERMAN TEXT	GB1932BK	2		
REV	DATE	BY	CHK	DESCRIPTION	ECN - R	CUST	SUP	