



Chipsmall Limited consists of a professional team with an average of over 10 year of expertise in the distribution of electronic components. Based in Hongkong, we have already established firm and mutual-benefit business relationships with customers from,Europe,America and south Asia,supplying obsolete and hard-to-find components to meet their specific needs.

With the principle of "Quality Parts,Customers Priority,Honest Operation,and Considerate Service",our business mainly focus on the distribution of electronic components. Line cards we deal with include Microchip,ALPS,ROHM,Xilinx,Pulse,ON,Everlight and Freescale. Main products comprise IC,Modules,Potentiometer,IC Socket,Relay,Connector.Our parts cover such applications as commercial,industrial, and automotives areas.

We are looking forward to setting up business relationship with you and hope to provide you with the best service and solution. Let us make a better world for our industry!



## Contact us

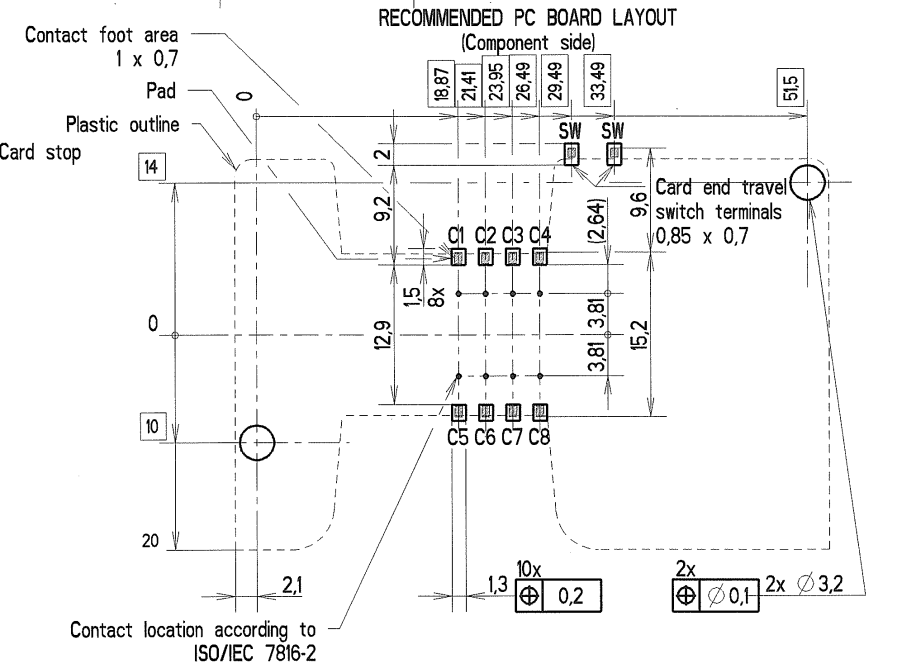
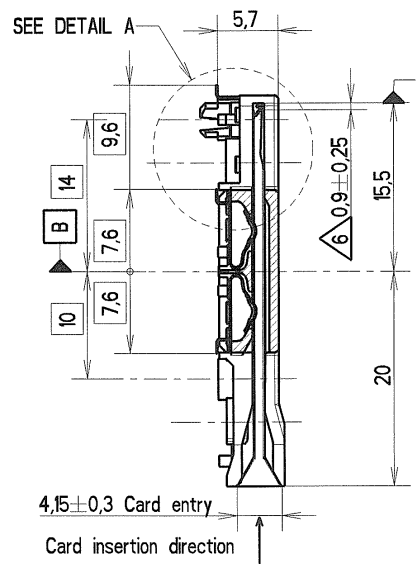
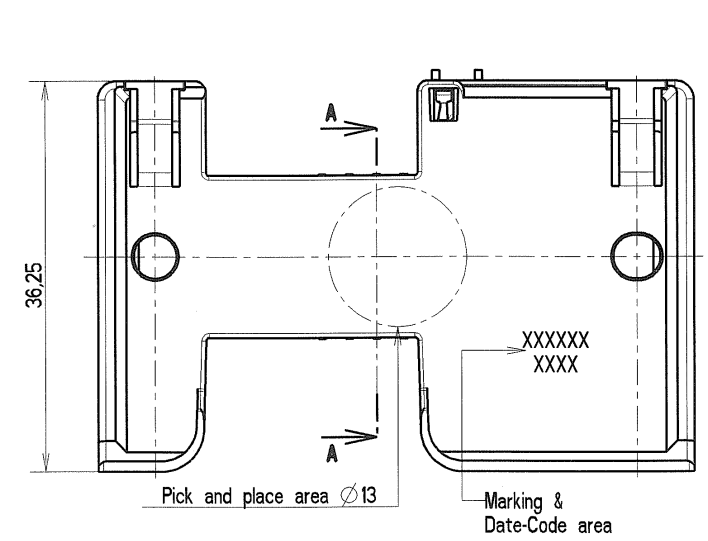
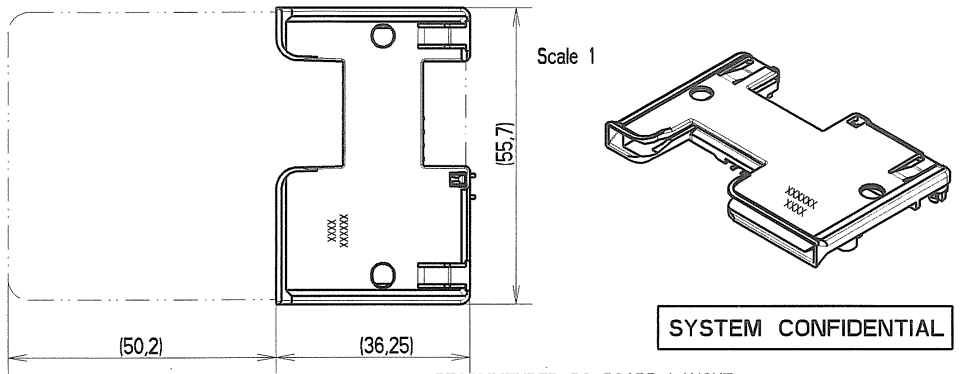
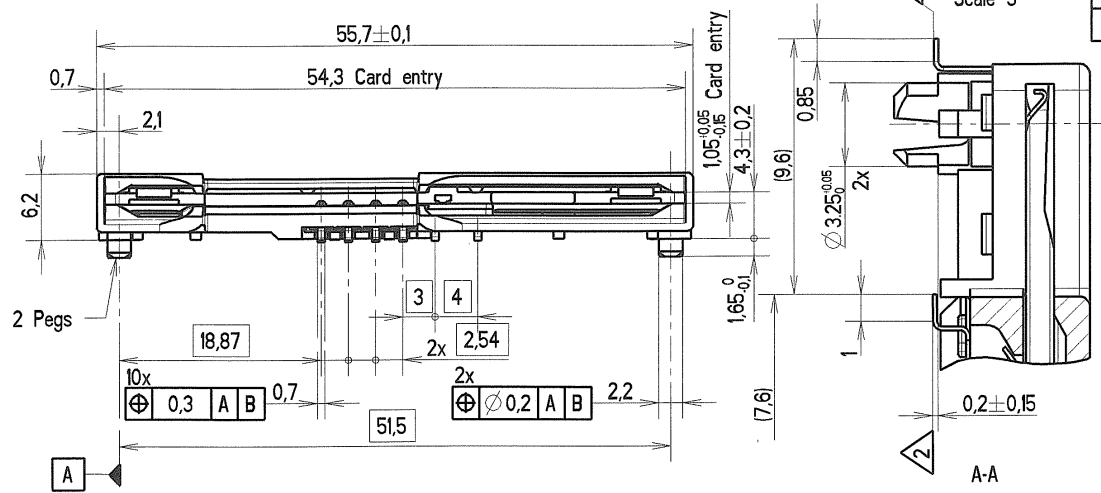
Tel: +86-755-8981 8866 Fax: +86-755-8427 6832

Email & Skype: info@chipsmall.com Web: www.chipsmall.com

Address: A1208, Overseas Decoration Building, #122 Zhenhua RD., Futian, Shenzhen, China



REV.	N° DCR	NATURE DE LA MODIFICATION	DATE	VISA
D	ECR-1406	References table added ; designation and marking updated	11/09/2007	VP
E	ECR-2182	Designation updated	07/05/2008	CD



Packaging	Packaging drawing	Marking	Designation	Part Number
Tray	030278Y0043	2013T	CCM01-2013LFT T30/	Y1112-2013A LFT
Reel	030278Y0059		CCM01-2013LFT R201	Y1112-2013B LFT

- Notes :
- 1 - Termination to PCB : SMT reflow soldering Temperature/time profile according to : C&K PS-LF-001 specification. Since there are no boardlocks , the connector must be held in place on the PCB across the top face of the cover.
  - 2 - Level of each contact tail compared to the nearest plastic stand-off. Coplanarity of metal soldering surfaces : 0,15 mm
  - 3 - Recommendation for solder paste thickness > 0,2 mm.
  - 4 - 2,5 microns min tin plating on contact terminal areas. 0,1 microns min gold plating on switch terminal areas.
  - 5 - Contact forces :
    - max 0,5 N per contact with max. card thickness.
    - min 0,2 N per contact with min. card thickness.
  - 6 - Card end travel switch NO activates when the sliding card is 0,9 mm from the card stop.
  - 7 - In case of customer accessories integration requesting an interface with CCM, please ask C&K for a 3D model.

MATIERE	TRAITEMENT	PROTECTION
SAUF INDIQUE : -COTES DONNEES AVANT PROTECTION -BAVURES ET ARETES VIVES SUPPRIMEES	TOL. LINEAIRE ± 0,1 TOL. ANGULAIRE ± 2	DIMENSIONS CRITIQUES DIMENSIONS SPC
DESSINE P.DAUBIGNEY DATE 19-05-05	ANALYSE Y TAB. FAM. Y PROVE Y	LANGAGE E
VERIFIE G.PINON DATE 07/05/2008	REPLACE	
APPROUVE L.KUBAT DATE 07/05/2008	DESIGNATION	
G&K C&K Components	PROJECTION FER DIEDRE ECHELLE 2	CCM01-2013 LFT Specific version 2 pegs 3,25 mm
	TAILLE FEUILLE NUMERO A3 1 / 1 CU	REV 030288Y2013 E

CE PLAN EST LA PROPRIETE DE C&K. COMPONENTS SAS ET NE PEUT ETRE REPRODUIT OU COMMUNIQUE SANS SON AUTORISATION