



Chipsmall Limited consists of a professional team with an average of over 10 year of expertise in the distribution of electronic components. Based in Hongkong, we have already established firm and mutual-benefit business relationships with customers from,Europe,America and south Asia,supplying obsolete and hard-to-find components to meet their specific needs.

With the principle of “Quality Parts,Customers Priority,Honest Operation,and Considerate Service”,our business mainly focus on the distribution of electronic components. Line cards we deal with include Microchip,ALPS,ROHM,Xilinx,Pulse,ON,Everlight and Freescale. Main products comprise IC,Modules,Potentiometer,IC Socket,Relay,Connector.Our parts cover such applications as commercial,industrial, and automotives areas.

We are looking forward to setting up business relationship with you and hope to provide you with the best service and solution. Let us make a better world for our industry!



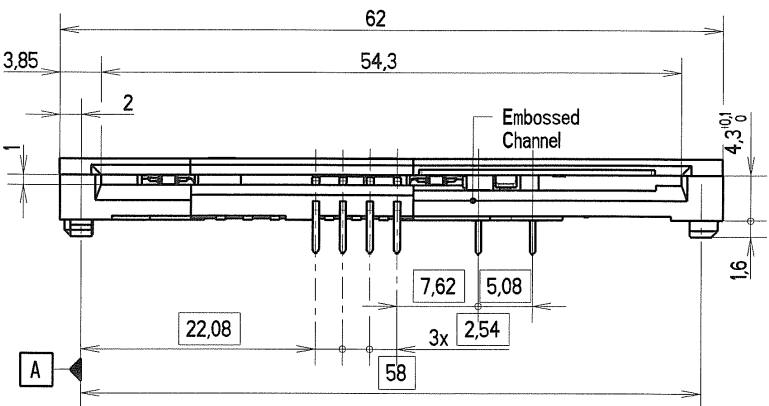
Contact us

Tel: +86-755-8981 8866 Fax: +86-755-8427 6832

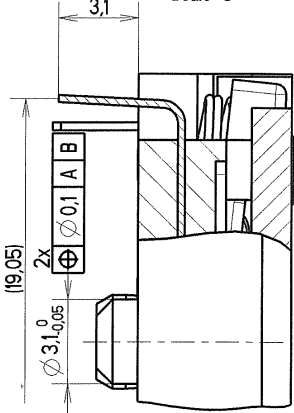
Email & Skype: info@chipsmall.com Web: www.chipsmall.com

Address: A1208, Overseas Decoration Building, #122 Zhenhua RD., Futian, Shenzhen, China

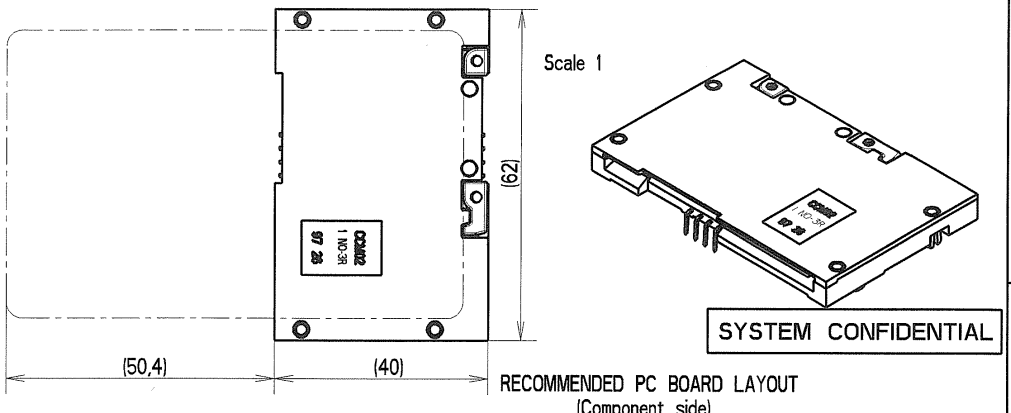




DETAIL A
Scale 5

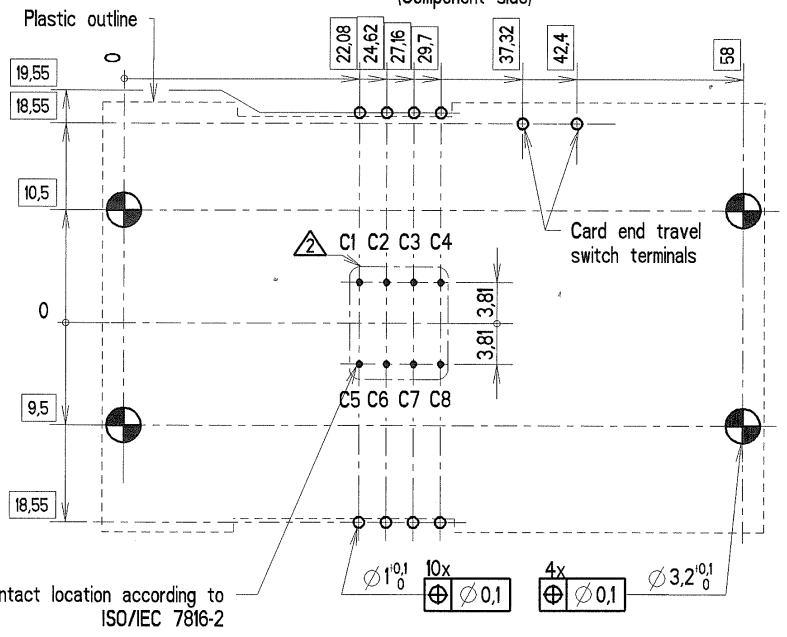
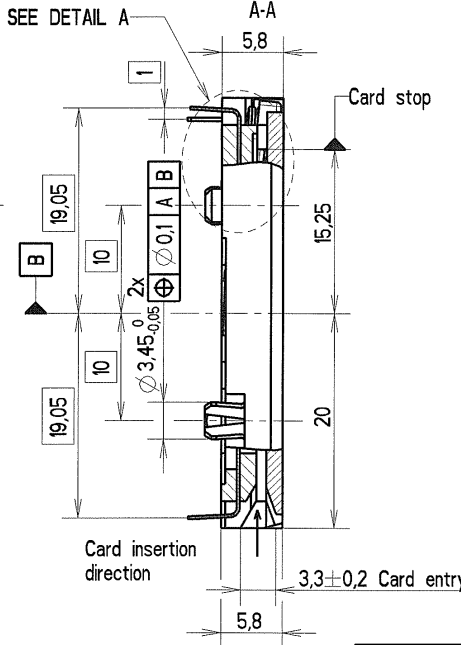
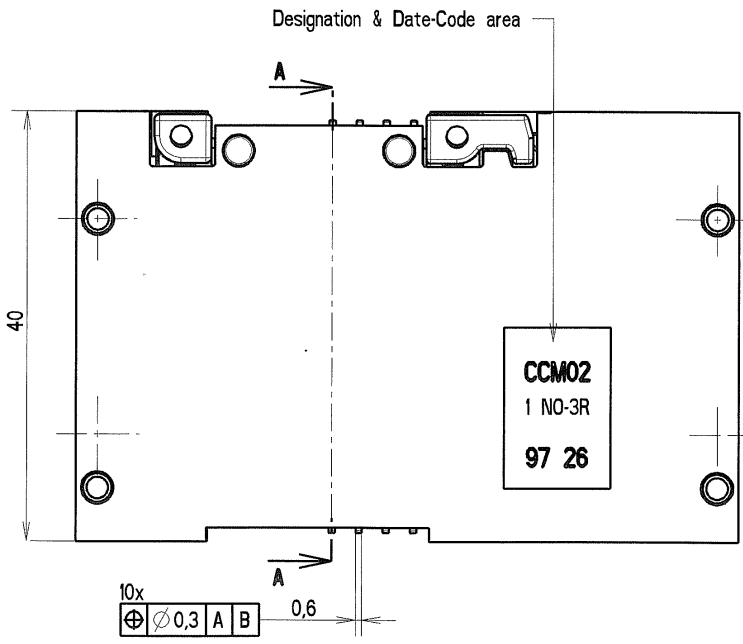


REV.	N° DCR	NATURE DE LA MODIFICATION	DATE	VISA
A	ECR-1410	Marking deleted	03-12-07	J.S



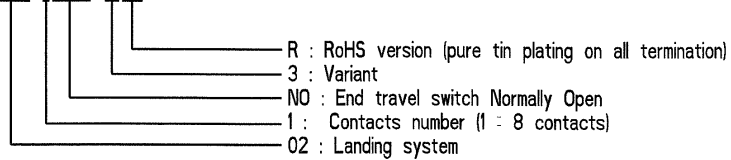
SYSTEM CONFIDENTIAL

RECOMMENDED PC BOARD LAYOUT
(Component side)



- Notes :
- 1 - Termination to PCB : Thru-hole tails
 - △ - Contacts location (1,2,3..8) for centered Integrated Circuit card (ISO/IEC 7816-2, fig. 2)
 - 3 - Description of the designation :

CCM02-1NO-3R



MATIERE		TRAITEMENT		PROTECTION	
SAUF INDIQUE : -COTES DONNEES AVANT PROTECTION -BAVURES ET ARETES VIVES SUPPRIMEES		TOL. LINEAIRE ± 0,1	TOL. ANGULAIRE ± 2 °	DIMENSIONS CRITIQUES ▼	
DESSINE P.DAUBIGNEY DATE 12-01-06		ANALYSE N TAB. FAM. Y PRO/E Y		DIMENSIONS SPC ▼	
VERIFIE G.PINON DATE 03/12/2007		REPLACE		LANGAGE E	
APPROUVE L.KUBAT DATE 04/12/2007		PROJECTION 1ER DIEDRE		DESIGNATION	
G&K C&K Components		ECHELLE 2		CCM02-1NO-3 RoHS	
BP 359 - 39105 Dole - FRANCE -		TAILLE A3	FEUILLE 1 / 1	NUMERO 030288Y0207	REV A