



Chipsmall Limited consists of a professional team with an average of over 10 year of expertise in the distribution of electronic components. Based in Hongkong, we have already established firm and mutual-benefit business relationships with customers from,Europe,America and south Asia,supplying obsolete and hard-to-find components to meet their specific needs.

With the principle of “Quality Parts,Customers Priority,Honest Operation,and Considerate Service”,our business mainly focus on the distribution of electronic components. Line cards we deal with include Microchip,ALPS,ROHM,Xilinx,Pulse,ON,Everlight and Freescale. Main products comprise IC,Modules,Potentiometer,IC Socket,Relay,Connector.Our parts cover such applications as commercial,industrial, and automotives areas.

We are looking forward to setting up business relationship with you and hope to provide you with the best service and solution. Let us make a better world for our industry!



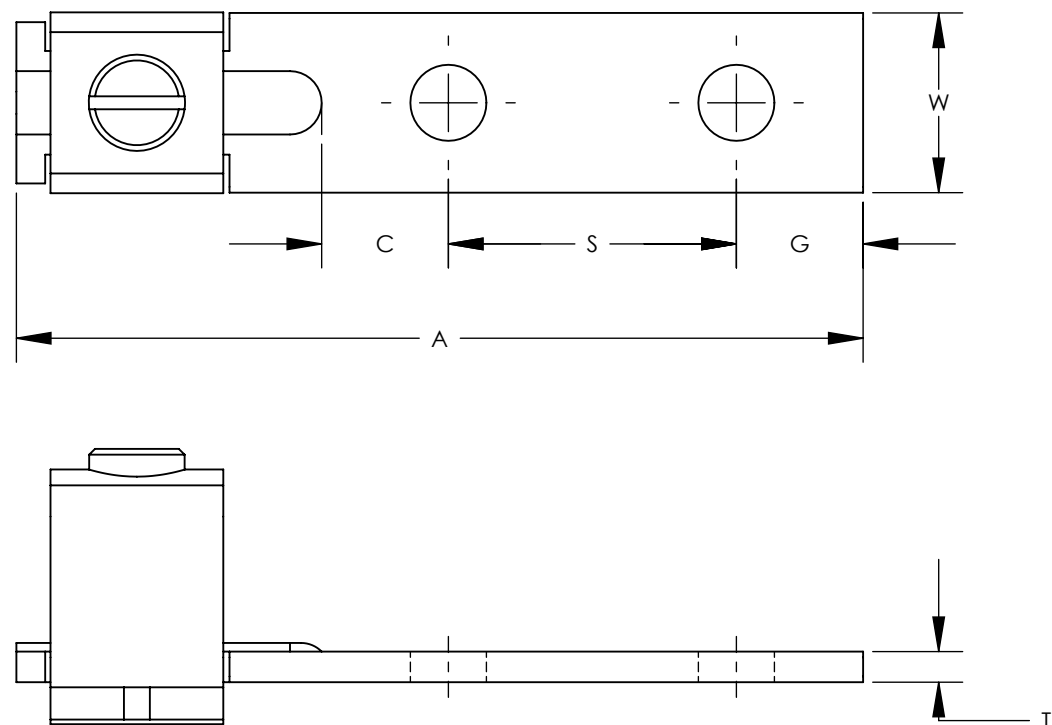
Contact us

Tel: +86-755-8981 8866 Fax: +86-755-8427 6832

Email & Skype: info@chipsmall.com Web: www.chipsmall.com

Address: A1208, Overseas Decoration Building, #122 Zhenhua RD., Futian, Shenzhen, China





NOTES:

1. MATERIAL:
BODY - COPPER
SCREW - STEEL, ZINC PLATED
2. cULus LISTED FOR USE UP TO 600V & TEMPERATURE RATED 90°C
3. RATED FOR USE WITH COPPER STRANDED CODE CONDUCTOR ONLY
4. THESE PARTS ARE RoHS COMPLIANT
5. SEE PACKAGING LABEL FOR TIGHTENING TORQUE INFORMATION
6. PKG QTY:
Q = 25
3 = 3



PANDUIT PART NUMBER	WIRE RANGE COPPER	CURRENT RATING (AMPS)	STUD SIZE IN	DIMENSIONS - IN [mm] +/- .02 [.5]						HEX SIZE*
				A	W	G	S	C	T	
CD35-36SL-QY	#14 - #6 (1) #10 & (1) #12 (1) #12 & (1) #14 (2) #10 (2) #12 (2) #14	50	3/16	2.13 [54.1]	.38 [9.7]	.22 [5.6]	1.00 [25.4]	.38 [9.7]	.07 [1.8]	SLOTTED
CD70-14SL-QY	#8 - #2	90	1/4	2.26 [57.4]	.50 [12.7]	.25 [6.4]	1.00 [25.4]	.38 [9.7]	.08 [2.0]	SLOTTED
CD125-14SL-QY	#2 - #1/0	125	1/4	2.94 [74.7]	.62 [15.7]	.44 [11.2]	1.00 [25.4]	.44 [11.2]	.11 [2.8]	SLOTTED
CD225-56HKR-Q	#2 - #4/0	225	5/16	3.38 [85.9]	.99 [25.1]	.50 [12.7]	1.00 [25.4]	.63 [16.0]	.12 [3.0]	7/32
CD300-38HK-3Y	#1 - 350	300	3/8	4.94 [125.5]	.99 [25.1]	.94 [23.9]	1.00 [25.4]	1.38 [35.1]	.12 [3.0]	5/16
CD400-38HK-3Y	#1/0 - 500	400	3/8	5.62 [142.7]	1.50 [38.1]	.94 [23.9]	1.75 [44.5]	.88 [22.4]	.18 [4.6]	5/16
CD650-12HK-3Y	600 - 1000	650	1/2	6.88 [174.8]	2.00 [50.8]	1.19 [30.2]	1.75 [44.5]	1.75 [44.5]	.25 [6.4]	3/8

*HEX STYLE & SIZE MAY DIFFER FROM CHART. DIFFERENCE IN SIZE WILL NOT AFFECT FIT, FORM, OR FUNCTION OF PART

REV	DATE	BY	CHK	DESCRIPTION	ECN	-R	SUP	CHK'D
04	8/16	JHNU	JHNU	ADDED CD225-56HKR-Q, REMOVED CD225-56HKR-QY	N41666BA-C41666	RGB	RGB	
03	4/13	JHNU	JHNU	REVISED WIRE RANGE FOR CD225-56HKR-QY: 2-4/0 WAS 6-4/0 REVISED WIRE RANGE FOR CD70-14SL-QY: 8-2 WAS 12-2	N41666BA-C41666	RGB	RGB	
02	2/12	JHNU	JHNU	REVISED "W" DIMENSION: CD35 WAS .37, CD70 WAS .47, CD650 WAS 1.97 REVISED "T" DIMENSION: CD650 WAS .22 REVISED PART NUMBERS: ADDED "SL" SUFFIX TO CD35, CD70, CD125 ADDED "HK" SUFFIX TO CD225, CD300, CD400, CD650	N41666BA-C41666	RGB	RGB	
01	1/07	JHNU	JHNU	ADDED PART WEIGHT COLUMN TO TABLE	PC00640			
00	3/06	JHNU	LEM	DRAWING RELEASED - RoHS COMPLIANT	PC00348			

PANDUIT CORP. TINLEY PARK, ILLINOIS

CD SERIES COPPER MECHANICAL CONNECTORS
CUSTOMER DRAWING

UNLESS OTHERWISE SPECIFIED
DIMENSIONAL TOLERANCES ARE:
(.X) ± (.XXX) ±
(.XX) ± ANGLES ±

UNLESS OTHERWISE SPECIFIED,
ALL DIMENSIONS ARE GIVEN IN
INCHES, THIRD ANGLE PROJECTION

DRAWN BY	JHNU	DATE		SCALE	NONE
DATE		DRAWING NO / CAD FILE		DWG	B
CHK'D		C41666_03		SIZE	B