



Chipsmall Limited consists of a professional team with an average of over 10 year of expertise in the distribution of electronic components. Based in Hongkong, we have already established firm and mutual-benefit business relationships with customers from,Europe,America and south Asia,supplying obsolete and hard-to-find components to meet their specific needs.

With the principle of “Quality Parts,Customers Priority,Honest Operation,and Considerate Service”,our business mainly focus on the distribution of electronic components. Line cards we deal with include Microchip,ALPS,ROHM,Xilinx,Pulse,ON,Everlight and Freescale. Main products comprise IC,Modules,Potentiometer,IC Socket,Relay,Connector.Our parts cover such applications as commercial,industrial, and automotives areas.

We are looking forward to setting up business relationship with you and hope to provide you with the best service and solution. Let us make a better world for our industry!



Contact us

Tel: +86-755-8981 8866 Fax: +86-755-8427 6832

Email & Skype: info@chipsmall.com Web: www.chipsmall.com

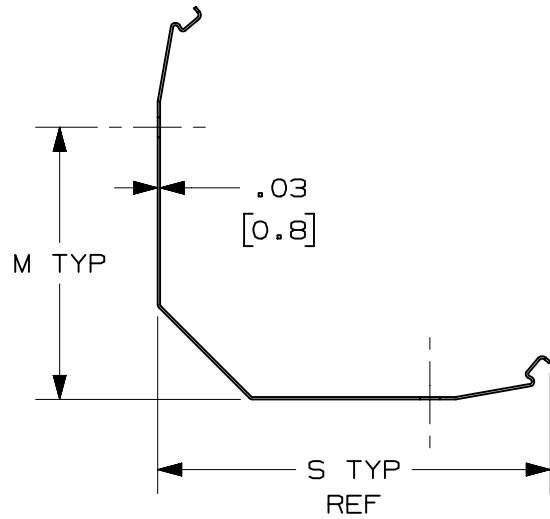
Address: A1208, Overseas Decoration Building, #122 Zhenhua RD., Futian, Shenzhen, China



2

1

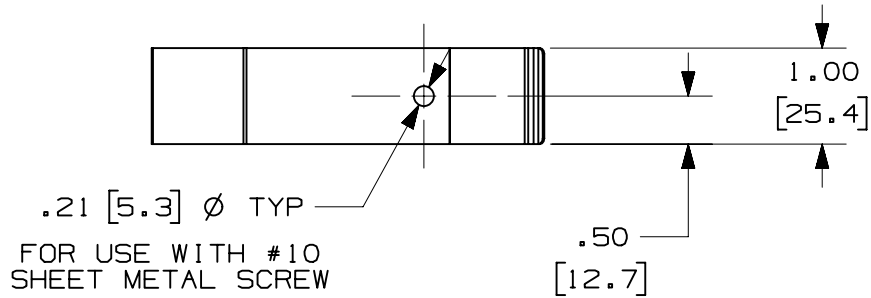
THIS COPY IS PROVIDED ON A RESTRICTED BASIS AND IS NOT TO BE USED IN ANY WAY DETRIMENTAL TO THE INTERESTS OF PANDUIT CORP.



- NOTES:
 1. DIMENSIONS IN PARENTHESES ARE METRIC.
 2. USED WITH CORNER DUCT - SEE DRAWING # 39210-03

PART NO.	M	S	USED WITH
CDCLP2	1.60 [40.5]	2.32 [58.9]	CWD2**6
CDCLP3	1.91 [48.5]	3.13 [79.6]	CWD3**6
CDCLP4	2.84 [72.0]	4.09 [103.9]	CWD4**6

△G



△F

REV	DATE	BY	CHK	APR	DESCRIPTION	ECN
4	07.29.13	BDK	MRJS	RTFI	G. ADDED CDCLP2	39187-04
3	03-06-13	JBN	RTFI	RTFI	F. UPDATED DRAWING BORDER & TITLE BLOCK	39187-04

TITLE		WIRING DUCT SPECIFICATIONS CORNER DUCT MOUNTING CLIP	
ITEM REVISION NAME		CUSTOMER DRAWING	
DATASET FILE NAME		D39353BA/06	
UNLESS OTHERWISE SPECIFIED, DIMENSIONAL TOLERANCES ARE: IN [mm]		PANDUIT	
.X ± .04 [1.0]		MATERIAL: CDCLP2: STAINLESS STEEL CLCLP3 & 4: SPRING STEEL	
.XXX ±		DRAWING NUMBER: 39178-04	
ANGLES ±		THIRD ANGLE PROJECTION	
DRAWN BY	DATE	CHK	SCALE
JCST	02-01-06	JKG	NONE
SHT 1 OF 1		SIZE A	

2

1

D10100DA/15