



Chipsmall Limited consists of a professional team with an average of over 10 year of expertise in the distribution of electronic components. Based in Hongkong, we have already established firm and mutual-benefit business relationships with customers from,Europe,America and south Asia,supplying obsolete and hard-to-find components to meet their specific needs.

With the principle of “Quality Parts,Customers Priority,Honest Operation,and Considerate Service”,our business mainly focus on the distribution of electronic components. Line cards we deal with include Microchip,ALPS,ROHM,Xilinx,Pulse,ON,Everlight and Freescale. Main products comprise IC,Modules,Potentiometer,IC Socket,Relay,Connector.Our parts cover such applications as commercial,industrial, and automotives areas.

We are looking forward to setting up business relationship with you and hope to provide you with the best service and solution. Let us make a better world for our industry!



Contact us

Tel: +86-755-8981 8866 Fax: +86-755-8427 6832

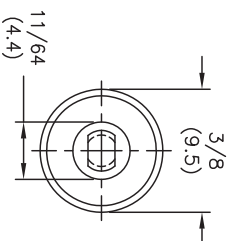
Email & Skype: info@chipsmall.com Web: www.chipsmall.com

Address: A1208, Overseas Decoration Building, #122 Zhenhua RD., Futian, Shenzhen, China

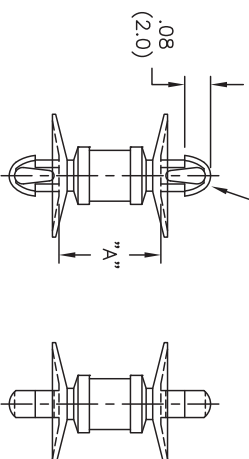


AVAILABLE BY SPECIAL ORDER ONLY

PART NO.	DIM. "A"
CDLCBST-3-01	±.015 (±0.4)
CDLCBST-4-01	3/16 (4.8)
CDLCBST-4-01	1/4 (6.4)
CDLCBST-5-01	5/16 (7.9)
CDLCBST-6-01	3/8 (9.5)
CDLCBST-7-01	7/16 (11.1)
CDLCBST-8-01	1/2 (12.7)
CDLCBST-9-01	9/16 (14.3)
CDLCBST-10-01	5/8 (15.9)



TO SNAP-LOCK IN A .100±.002
(2.54±0.05) DIA. HOLE, IN A
.062 (1.57) THICK BOARD [BOTH ENDS]



- NOTES:
1. MATERIAL: NYLON 6/6 (RMS-01).
 - FLAME RETARDANT, NYLON (RMS-19), AVAILABLE BY SPECIAL ORDER ONLY.
 2. COLOR: NATURAL.

TITLE: CUPPED DUAL LOCKING CKT.BD. SUPPORT, TEARDROP		DWG IN IN (MM)		
TOLERANCES UNLESS NOTED		FINAL		
E	SEE ECN #862 FOR CHANGES	SM 10.04.04		
D	SEE ECN #474 FOR CHANGES	SM 09.30.02		
C	CHANGED FILE NO. AND TITLE BLOCK.	SM 04.27.01		
B	MAT'L RMS-19 ADDED	J.L. 12.19.97		
A	CONVERTED TO ACAD	PB 06.20.94		
REV	DESCRIPTION	ENGR DATE		
FILE # CDLCBST		DWN: P.B.	APP:	PART #
MATERIAL: SEE NOTES		DT: 06-20-94	DT:	SEE TABLE
RE: RICHCO, INC.		RICHCO INC. PO BOX 804238, CHICAGO, 60680 (773) 539-4060		PRINT TYPE CA
XX=±.010				
.XX=±.005				
FRA=±1/64				
ANG=±1°				