



Chipsmall Limited consists of a professional team with an average of over 10 year of expertise in the distribution of electronic components. Based in Hongkong, we have already established firm and mutual-benefit business relationships with customers from,Europe,America and south Asia,supplying obsolete and hard-to-find components to meet their specific needs.

With the principle of “Quality Parts,Customers Priority,Honest Operation,and Considerate Service”,our business mainly focus on the distribution of electronic components. Line cards we deal with include Microchip,ALPS,ROHM,Xilinx,Pulse,ON,Everlight and Freescale. Main products comprise IC,Modules,Potentiometer,IC Socket,Relay,Connector.Our parts cover such applications as commercial,industrial, and automotives areas.

We are looking forward to setting up business relationship with you and hope to provide you with the best service and solution. Let us make a better world for our industry!



## Contact us

Tel: +86-755-8981 8866 Fax: +86-755-8427 6832

Email & Skype: info@chipsmall.com Web: www.chipsmall.com

Address: A1208, Overseas Decoration Building, #122 Zhenhua RD., Futian, Shenzhen, China

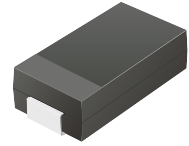


## CEFA201-G Thru. CEFA203-G

Reverse Voltage: 50 to 200 Volts

Forward Current: 2.0 Amp

RoHS Device

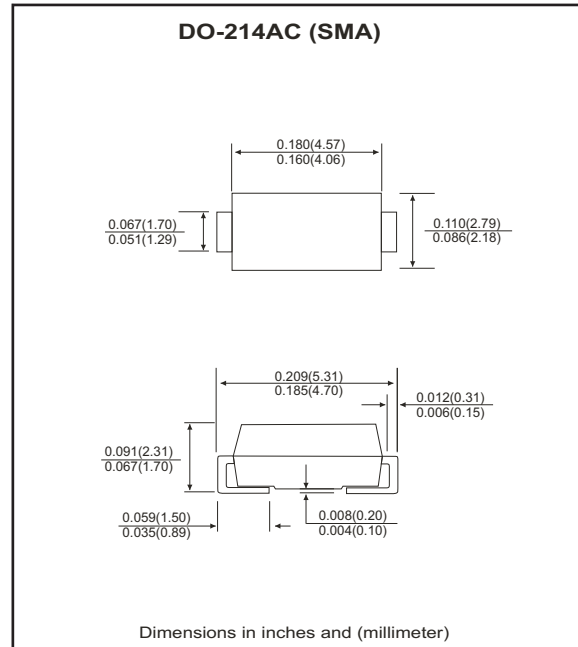


### Features

- Ideal for surface mount applications.
- Easy pick and place.
- Plastic package has Underwriters Lab. flammability classification 94V-0.
- Super fast recovery time for high efficient.
- Built-in strain relief.
- Low forward voltage drop.

### Mechanical data

- Case: JEDEC DO-214AC, molded plastic.
- Terminals: solderable per MIL-STD-750, method 2026.
- Polarity: Color band denotes cathode end.
- Approx. weight: 0.063 grams



### Maximum Ratings and Electrical Characteristics

Parameter	Symbol	CEFA201-G	CEFA202-G	CEFA203-G	Units
Max. repetitive peak reverse voltage	$V_{RRM}$	50	100	200	V
Max. DC blocking voltage	$V_{DC}$	50	100	200	V
Max. RMS voltage	$V_{RMS}$	35	70	140	V
Peak surge forward current, 8.3ms single half sine-wave superimposed on rate load (JEDEC method)	$I_{FSM}$	50			A
Max. average forward current	$I_o$	2.0			A
Max. instantaneous forward voltage at 2.0A	$V_F$	0.92			V
Reverse recovery time	$T_{rr}$	25			nS
Max. DC reverse current at $T_A=25\text{ }^{\circ}\text{C}$ rated DC blocking voltage $T_A=100\text{ }^{\circ}\text{C}$	$I_R$	5.0 100			$\mu\text{A}$
Max. thermal resistance (Note 1)	$R_{\theta JL}$	55			$^{\circ}\text{C/W}$
Max. operating junction temperature	$T_J$	150			$^{\circ}\text{C}$
Storage temperature	$T_{STG}$	-55 to +150			$^{\circ}\text{C}$

Notes: 1. Thermal resistance from junction to lead mounted on P.C.B. with 8.0x8.0 mm copper pad area.

## RATING AND CHARACTERISTIC CURVES (CEFA201-G thru CEFA203-G)

Fig.1 Reverse Characteristics

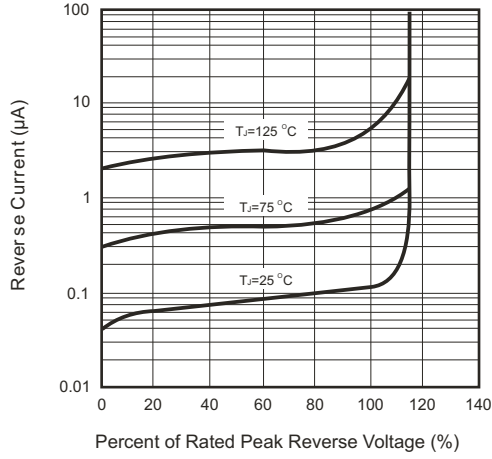


Fig.2 Forward Characteristics

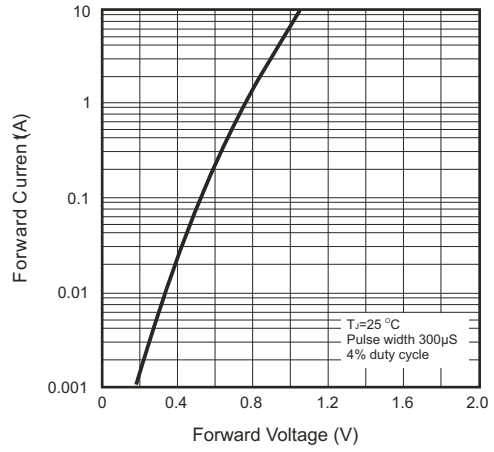


Fig.3 Current Derating Curve

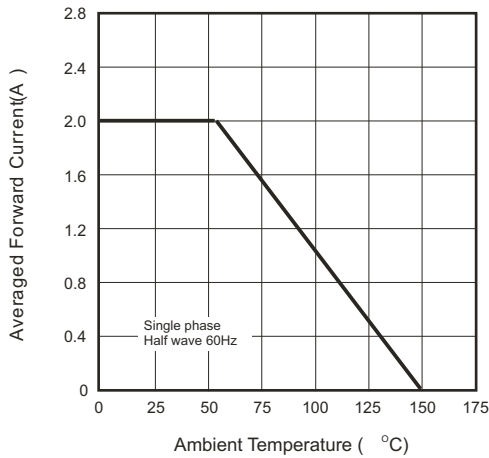


Fig.4 Non-repetitive Forward Surge Current

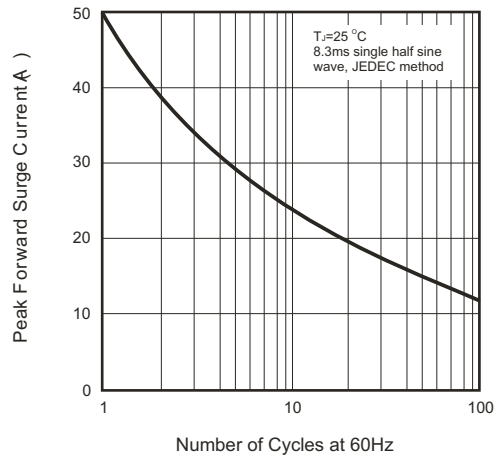
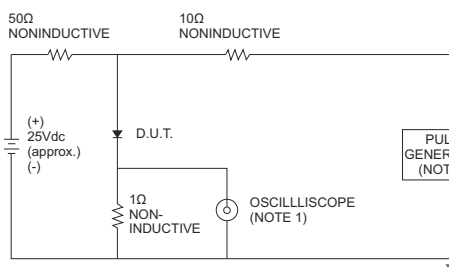


Fig.5 Test Circuit Diagram and Reverse Recovery Time Characteristics



NOTES: 1. Rise time=7ns max., input impedance=1 M $\Omega$ , 22pF.  
2. Rise time=10ns max., input impedance=50 $\Omega$ .

