



Chipsmall Limited consists of a professional team with an average of over 10 year of expertise in the distribution of electronic components. Based in Hongkong, we have already established firm and mutual-benefit business relationships with customers from,Europe,America and south Asia,supplying obsolete and hard-to-find components to meet their specific needs.

With the principle of “Quality Parts,Customers Priority,Honest Operation,and Considerate Service”,our business mainly focus on the distribution of electronic components. Line cards we deal with include Microchip,ALPS,ROHM,Xilinx,Pulse,ON,Everlight and Freescale. Main products comprise IC,Modules,Potentiometer,IC Socket,Relay,Connector.Our parts cover such applications as commercial,industrial, and automotives areas.

We are looking forward to setting up business relationship with you and hope to provide you with the best service and solution. Let us make a better world for our industry!



## Contact us

Tel: +86-755-8981 8866 Fax: +86-755-8427 6832

Email & Skype: info@chipsmall.com Web: www.chipsmall.com

Address: A1208, Overseas Decoration Building, #122 Zhenhua RD., Futian, Shenzhen, China





# LH7A404 CARD ENGINE

(PRELIMINARY)

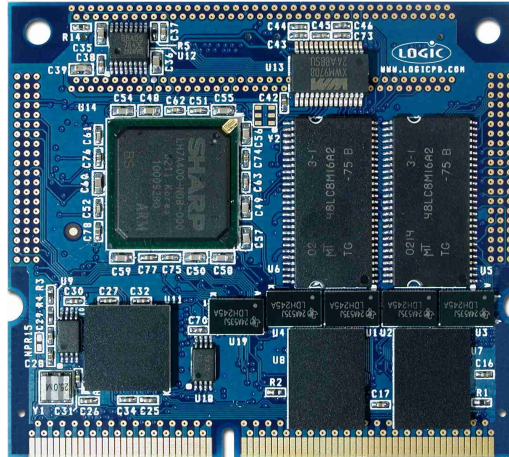
Developing products is as simple as



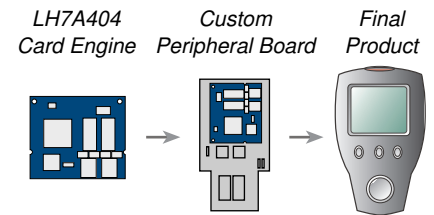
- A Application Development Kits
- B Board Support Packages
- C Card Engines

The LH7A404 Card Engine is a compact, product-ready hardware and software solution for developing embedded products with **less time, less cost, less risk ... more innovation.**

The LH7A404 Card Engine is a complete embedded computing module offering essential features for handheld and embedded networking applications in the industrial, consumer and medical markets. The use of custom peripheral boards makes the Card Engine the ideal foundation for OEMs developing handheld and compact products. The Card Engine provides a common reference pin-out on its expansion connectors, which enables customers to easily scale to next generation micro controller Card Engines when new functionality or performance is required.



Actual Size (2.37" x 2.67")



### SOFTWARE HIGHLIGHTS

- Ready to run Windows™ CE or Linux BSPs
- Bootloader/Monitor
- Board Support Packages
- Custom Linux or Windows™ CE device driver development

### CUSTOMER SUPPORT

Logic provides technical support for Card Engines. Various support packages are available; contact us for more information.

- **Processor** Sharp LH7A404 32 bit ARM922TDMI RISC microprocessor
  - Running up to 200 MHz (0 to 70 Degrees C) with 100 MHz bus speed
  - Running up to 166 MHz (-40 to 85 Degrees C) with 83 MHz bus speed
- **SDRAM Memory** 32 or 64 Mbytes on board
- **Flash Memory** Up to 32 Mbytes on board
- **Display** Programmable color LCD controller
  - Built in driver supports up to 1024 x 768 x 16 bit color
  - Supports STN, Color STN, HR-TFT, AD-TFT, TFT
- **Touch Screen** Four or Five wire integrated touch interface
- **Network Support** 10/100 BASE-T Ethernet controller (application/debug)
  - SMSC LAN 91C111 (MAC & PHY)
- **Audio** Audio Codec AC97 (Wolfson WM9708)
- **PC Card Expansion**
  - Compact Flash Type 1 card (memory storage only)
  - Dual PCMCIA interface + 1 memory mode CF
  - Smart Card Interface (ISO7816)
  - MMC
- **USB** USB host and 1 device interface (USB 1.1)
- **Serial Ports** 3 X 16C550 like, standard UARTS
- **IrDA** SIR supports up to 115.2 Kbps
- **PS2** PS2 Keyboard & Mouse
- **GPIO** Programmable depending on peripheral requirements
- **SSP** Supports either Motorola SPI™, National Semiconductor MICROWIRE™, TI SSI
- **Software**
  - Windows™ CE and Linux BSPs available
  - LogicLoader™ (bootloader/monitor)
- **Mechanical**
  - Compact Size: 2.37" (60.2 mm) long x 2.67" (67.8 mm) wide x 0.17" (4.4 mm) high
  - 144 pin SODIMM Connector for connection to custom peripheral board
  - Two high density 80-pin expansion connectors for peripheral access
- **Application Development Kits**
  - Zoom™ Starter Development Kit
  - Zoom™ Integrated Development Kit (Avail. Soon)

