



Chipsmall Limited consists of a professional team with an average of over 10 year of expertise in the distribution of electronic components. Based in Hongkong, we have already established firm and mutual-benefit business relationships with customers from,Europe,America and south Asia,supplying obsolete and hard-to-find components to meet their specific needs.

With the principle of “Quality Parts,Customers Priority,Honest Operation,and Considerate Service”,our business mainly focus on the distribution of electronic components. Line cards we deal with include Microchip,ALPS,ROHM,Xilinx,Pulse,ON,Everlight and Freescale. Main products comprise IC,Modules,Potentiometer,IC Socket,Relay,Connector.Our parts cover such applications as commercial,industrial, and automotives areas.

We are looking forward to setting up business relationship with you and hope to provide you with the best service and solution. Let us make a better world for our industry!



Contact us

Tel: +86-755-8981 8866 Fax: +86-755-8427 6832

Email & Skype: info@chipsmall.com Web: www.chipsmall.com

Address: A1208, Overseas Decoration Building, #122 Zhenhua RD., Futian, Shenzhen, China



Bussmann series CEO BS88 Offset bolted tags



Product description

Eaton's Bussmann series range of British Standard A4 fuse links is specifically designed for the protection of general industrial applications e.g. power distribution, cable protection, motor protection.

Standard features

- Good peak let-through current limitation
- 1:1:6 Selective coordination ratio between "minor" and "major" fuse
- Suitable for motor protection if gM type selected
- Power loss values well within the limits of IEC 60269

Catalogue symbol:

- CEO (Amps)

Technical data:

- Rated voltage: 500 V a.c. (gG) / 415 V a.c. (gM)
- Rated current: 32 to 100 A
- Breaking capacity: 80kA
- BS reference: A4
- Class of operation: gG and gM

Standards/approvals:

- BS88
- IEC 60269
- Suitable for use in RoHS compliant applications

Fuse holder (ordered separately)

- RS100H (Red Spot)

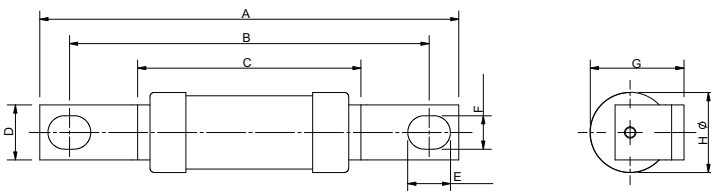
Packaging:

- MOQ 10

Table 1. Technical data

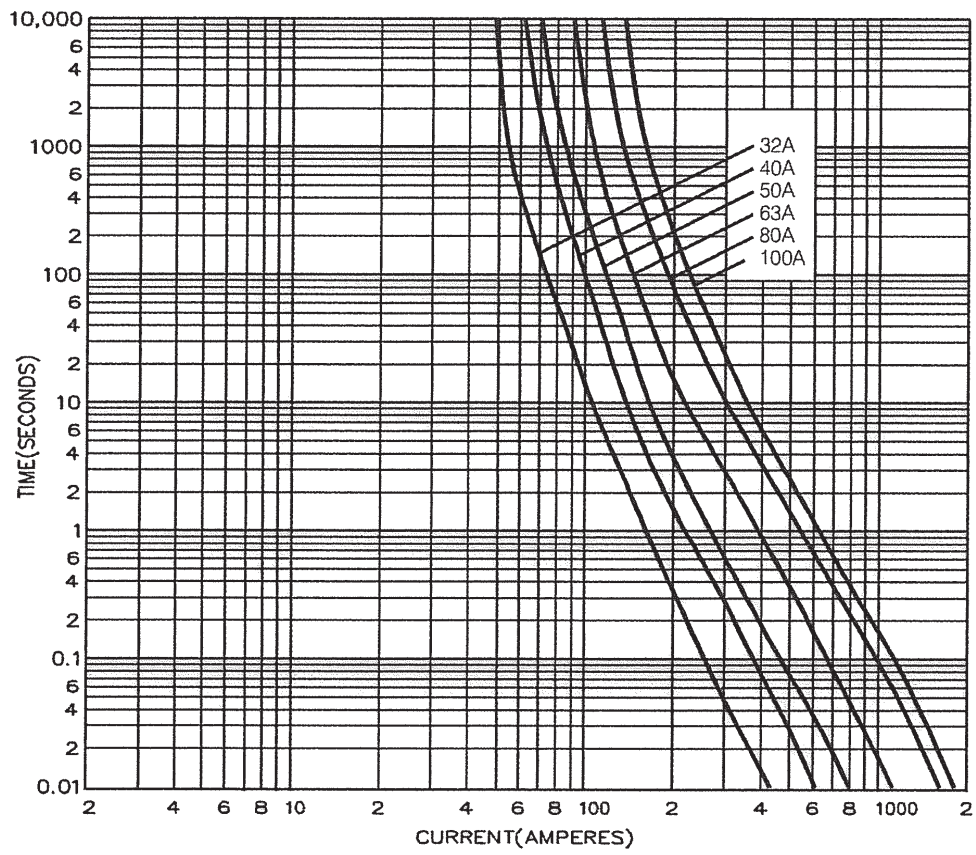
Part number	Voltage	Current rating (amps)	Energy integrals I ² t (A ² S)		Watts loss	Weight
			Pre-arcing	Total at 415V	W	
CEO32	500 V a.c.	32	1000	2760	3.5	75g
CEO40	500 V a.c.	40	1400	3750	4.7	75g
CEO50	500 V a.c.	50	3000	8350	4.9	75g
CEO63	500 V a.c.	63	7000	18,800	5.6	75g
CEO80	500 V a.c.	80	13,000	35,200	7.2	75g
CEO100	500 V a.c.	100	25,000	76,500	8.5	75g
CEO100M125	415 V a.c.	100M125	57,000	150,000	6.5	100g
CEO100M160	415 V a.c.	100M160	72,500	190,000	5	100g
CEO100M200	415 V a.c.	100M200	120,000	290,000	3.5	195g

Dimensions - mm

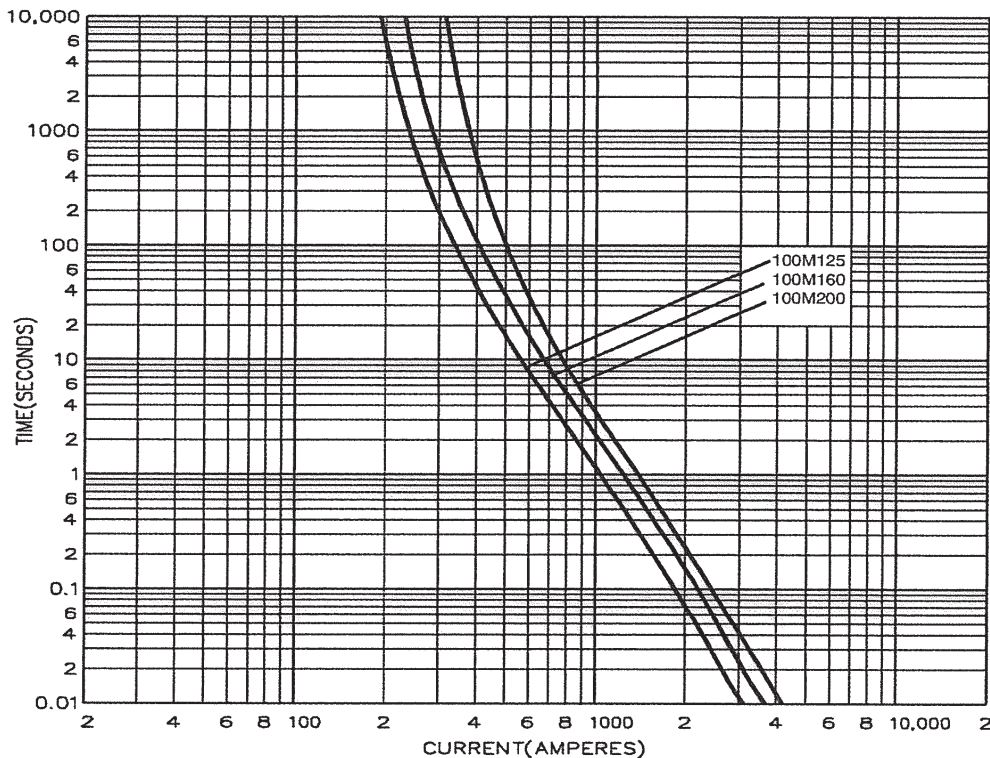


Catalogue numbers	A	B	C	D	E	F	G	H
CEO32-100	109.5	94	58.5	14.3	11	8.7	24.5	21
CEO100M125-160	109	94	58	14.3	11	8.7	26.8	25.8
CEO100M200	110	94	47	19	10	9	29.5	31

Time current curve - CEO32 to CEO100 A



Time current curve - CEO100M



Changes to the products, to the information contained in this document, and to prices are reserved; so are errors and omissions. Only order confirmations and technical documentation by Eaton is binding. Photos and pictures also do not warrant a specific layout or functionality. Their use in whatever form is subject to prior approval by Eaton. The same applies to Trademarks (especially Eaton, Moeller, and Cutler-Hammer). The Terms and Conditions of Eaton apply, as referenced on Eaton Internet pages and Eaton order confirmations.

Eaton
EMEA Headquarters
Route de la Longeraie 7
1110 Morges, Switzerland
Eaton.eu

© 2015 Eaton
All Rights Reserved
Publication No. 4115
July 2015