



Chipsmall Limited consists of a professional team with an average of over 10 year of expertise in the distribution of electronic components. Based in Hongkong, we have already established firm and mutual-benefit business relationships with customers from,Europe,America and south Asia,supplying obsolete and hard-to-find components to meet their specific needs.

With the principle of “Quality Parts,Customers Priority,Honest Operation,and Considerate Service”,our business mainly focus on the distribution of electronic components. Line cards we deal with include Microchip,ALPS,ROHM,Xilinx,Pulse,ON,Everlight and Freescale. Main products comprise IC,Modules,Potentiometer,IC Socket,Relay,Connector.Our parts cover such applications as commercial,industrial, and automotives areas.

We are looking forward to setting up business relationship with you and hope to provide you with the best service and solution. Let us make a better world for our industry!



Contact us

Tel: +86-755-8981 8866 Fax: +86-755-8427 6832

Email & Skype: info@chipsmall.com Web: www.chipsmall.com

Address: A1208, Overseas Decoration Building, #122 Zhenhua RD., Futian, Shenzhen, China



Features

- Extended GSM Band
- Low Loss
- Low Ripple

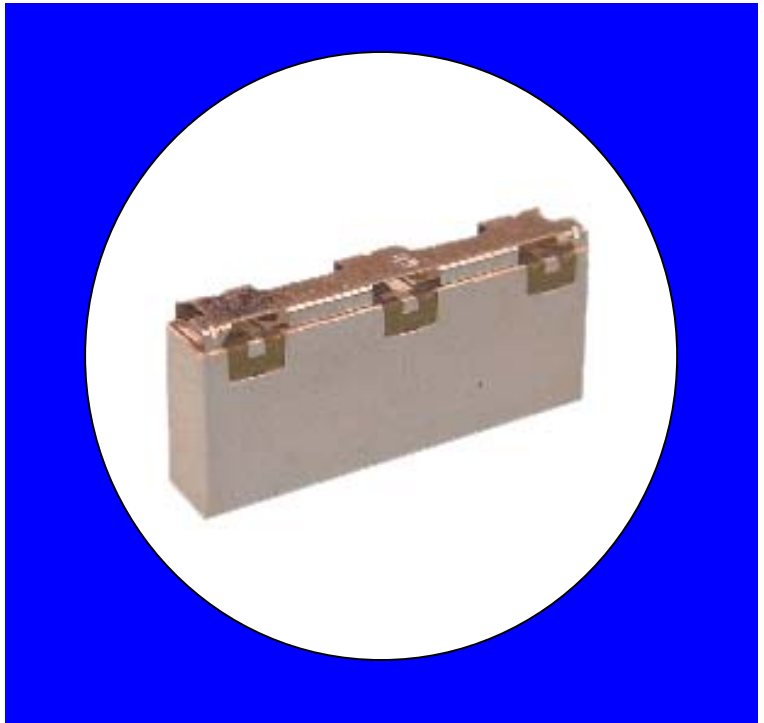
Description

Surface mount, silver (Ag) coated ceramic duplexer. Developed for use in Extended band GSM applications.

Weight: 3.7 grams typical

Material: Filter is composed of a ceramic block plated with Ag and a shield made of nickel silver plated steel.

Filter complies with RoHS standards.



Electrical Specifications

Parameter	Frequency (MHz)	Typical @ 25°C	Spec. @ 25°C	Spec. Over -40°C to +85°C
TX to Antenna Response				
Passband Insertion Loss	925-960	3.54 dB	3.9 dB max	4.2 dB max
Passband Return Loss @ TX	925-960	12.4 dB	10.5 dB min	10.0 dB min
Passband Return Loss @ ANT	925-960	13.3 dB	10.5 dB min	10.0 dB min
Passband Ripple	925-960	2.42 dB	2.6 dB max	3.1 dB max
Antenna to RX Response				
Passband Insertion Loss	880-915	3.51 dB	3.8 dB max	4.0 dB max
Passband Return Loss @ RX	880-915	12.1 dB	10.5 dB min	10.0 dB min
Passband Return Loss @ ANT	880-915	12.3 dB	10.5 dB min	10.0 dB min
Passband Ripple	880-915	2.36dB	2.6 dB max	3.1 dB max
Attenuation:	540-575	47.7 dB	45.5 dB min	45 dB min
	710-745	36.6 dB	30.5 dB min	30 dB min
TX to RX Response				
Rejection @ TX band	925-960	44.2 dB	40.5 dB min	40 dB min
Rejection @ RX band	880-915	37.4 dB	30.5 dB min	35 dB min
Power into any port			1 Watt max	

Note: Supplier shall test each filter to the critical electrical specifications of the above table. Any subsequent audits may deviate from in value due to measurement repeatability among different test systems. Such deviations shall not exceed the following limits:

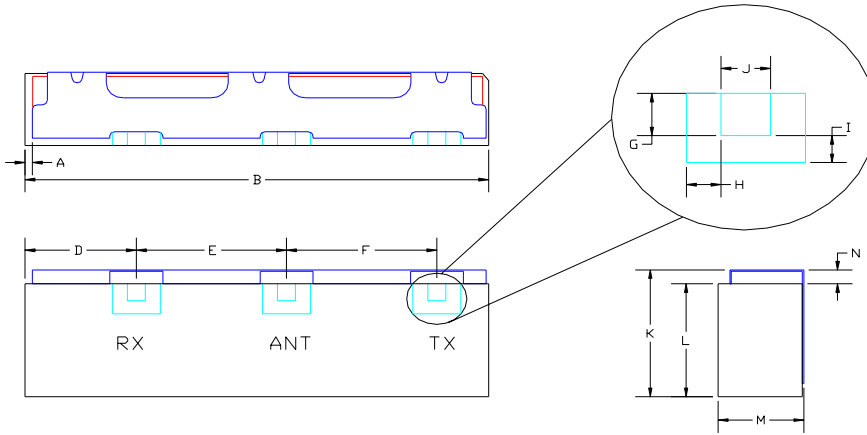
Specification Allowance	
Insertion Loss	0.1 dB
Return Loss	1.0 dB
Stopbands	1.0 dB

*This product is covered by one or more of the following U.S. and foreign patents including: US 4,692,726;US 4,742,562; US 4,800,348;US 4,829,274;US 5,146,193;EP 0573597;DE 0573597;FR 0573597;JP 508149/92;KR 142171;US 5,162,760;US 5,218,329;US 5,250,916;US 5,327,109;US 5,488,335;CA 2114029;FR 9306297;GB 2273393;JP 3205337;KR 115113;CN 93106228.4;US 5,512,866;EP 0706719;DE 0706719;FR 0706719;GB 0706719;CN 95190359.4;US 5,602,518;US 5,721,520;US 5,745,018;EP 0910875;DE 0910875;DK 0910875;FR 0910875;GB 0910875;IE 0910875;JP 505182/98;KR 10-323013;US 5,994,978;US 6,462,629;CN 00810420.4;US 6,559,735;US 6,650,202;US 6,834,429. Other US and foreign patents pending.

CTS Corporation 2006 reserves all copyrights in the layout, design and configuration of the patterns on this product.

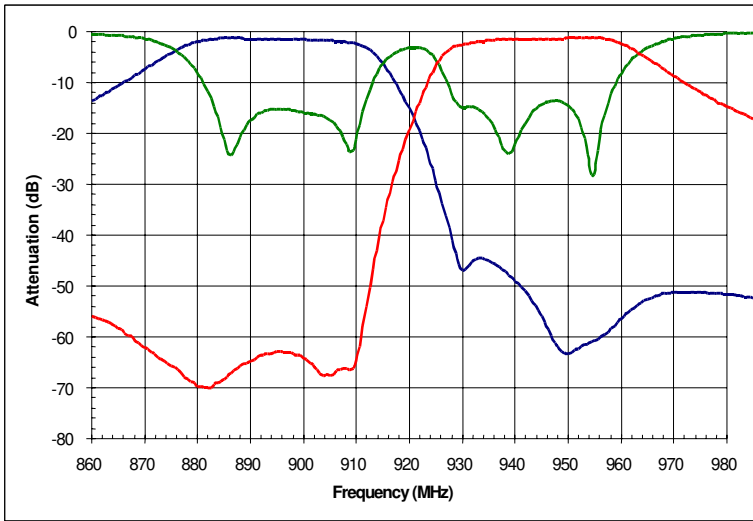
Mechanical Drawing

Rev 0 – Origin Date: July 11, 2005 – Revision Date: July 11, 2005

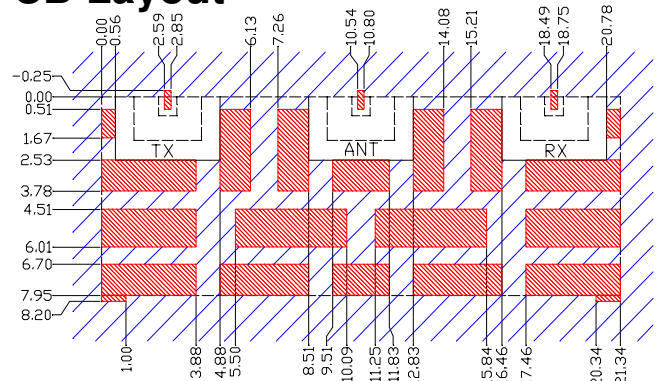


Dim	Nominal (mm)	Tolerance (mm) +/- or max
A		
B	21.54	max
C		
D	2.72	0.20
E	7.95	0.20
F	7.95	0.20
G	0.76	0.13
H	1.00	0.13
I	1.00	0.13
J	0.76	0.13
K	9.00	max
L	8.00	0.20
M	4.00	max
N	0.80	0.13

Electrical response



PCB Layout



Dimensions are in MM
Tolerances = ±.13

- Filter Outline
- Solder Resist Over Dielectric
- ▨ Exposed Conductor
- ▤ Solder Resist Over Conductor

Packaging and Marking

DIMENSION	UNITS	SPECIFICATION
REEL DIAMETER	mm	330
REEL WEIGHT	kg	2.6
REEL QUANTITY	ea.	500

