



Chipsmall Limited consists of a professional team with an average of over 10 year of expertise in the distribution of electronic components. Based in Hongkong, we have already established firm and mutual-benefit business relationships with customers from,Europe,America and south Asia,supplying obsolete and hard-to-find components to meet their specific needs.

With the principle of “Quality Parts,Customers Priority,Honest Operation,and Considerate Service”,our business mainly focus on the distribution of electronic components. Line cards we deal with include Microchip,ALPS,ROHM,Xilinx,Pulse,ON,Everlight and Freescale. Main products comprise IC,Modules,Potentiometer,IC Socket,Relay,Connector.Our parts cover such applications as commercial,industrial, and automotives areas.

We are looking forward to setting up business relationship with you and hope to provide you with the best service and solution. Let us make a better world for our industry!



Contact us

Tel: +86-755-8981 8866 Fax: +86-755-8427 6832

Email & Skype: info@chipsmall.com Web: www.chipsmall.com

Address: A1208, Overseas Decoration Building, #122 Zhenhua RD., Futian, Shenzhen, China



Features

- Low Loss
- Excellent Return Loss
- Small Size

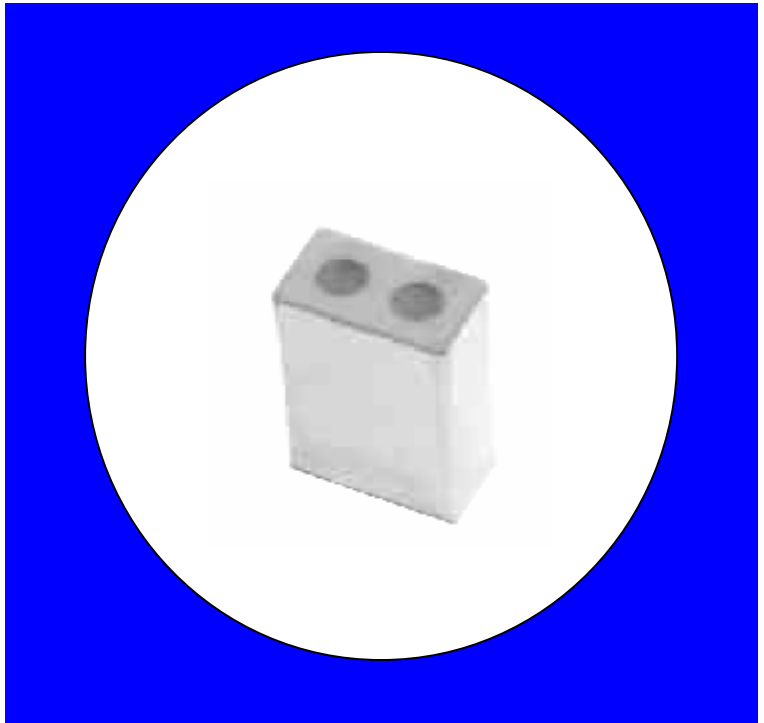
Description

Surface mount, silver (Ag) coated ceramic filter.

Weight: 1.82 grams typical

Material: Filter is composed of a ceramic block plated with Ag.

Filter complies with RoHS standards.



Electrical Specifications

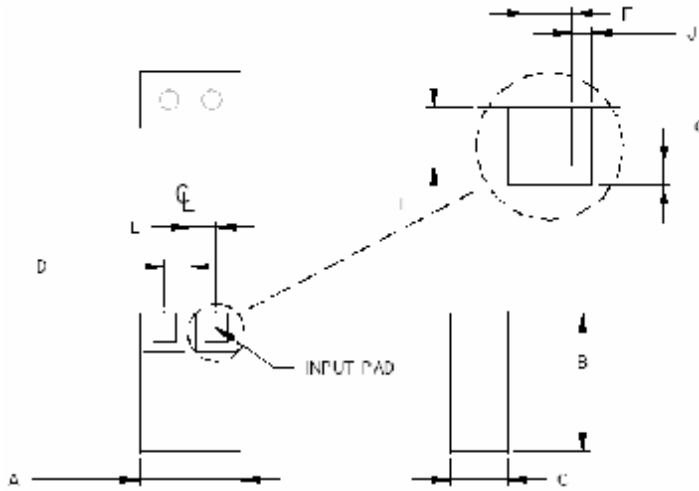
Parameter	Frequency (MHz)	Typical @ 25°C	Spec. @ 25°C	Spec @ -40°C to +85°C
Passband Insertion Loss	1215.6 – 1239.6	-0.8	-1.5	-1.8
Passband Ripple	1215.6 – 1239.6	0.3	0.5	0.7
Passband Return Loss	1215.6 – 1239.6	-20	-10	-9
Attenuation:	1152.6	-14	-12	-10
	1177.6	-9	-7	-5
	1277.6	-20	-17	-16
	1302.6	-38	-26	-24
Power into any port		1 Watt max		

Note: Supplier shall test each filter to the critical electrical specifications of the above table. Any subsequent audits may deviate from in value due to measurement repeatability among different test systems. Such deviations shall not exceed the following limits:

Specification Allowance	
Insertion Loss	0.1 dB
Return Loss	1.0 dB
Stopbands	1.0 dB

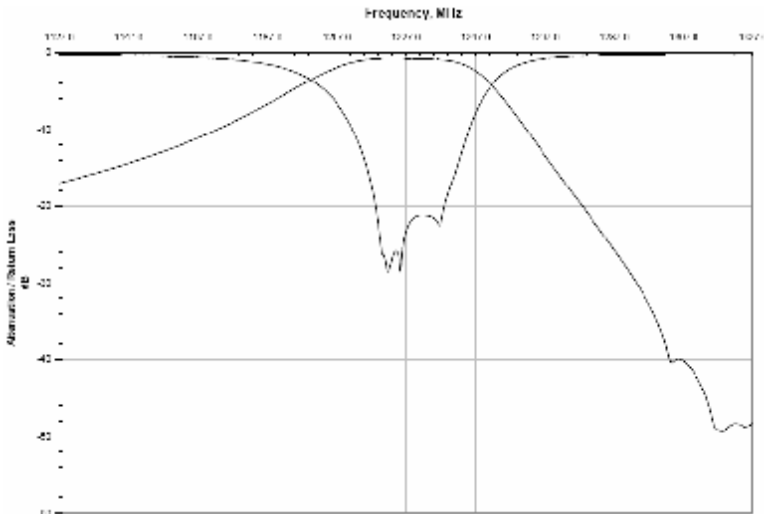
Mechanical Drawing

Revision B – Origin Date: September 28, 2005 – Revision Date: July 26, 2011

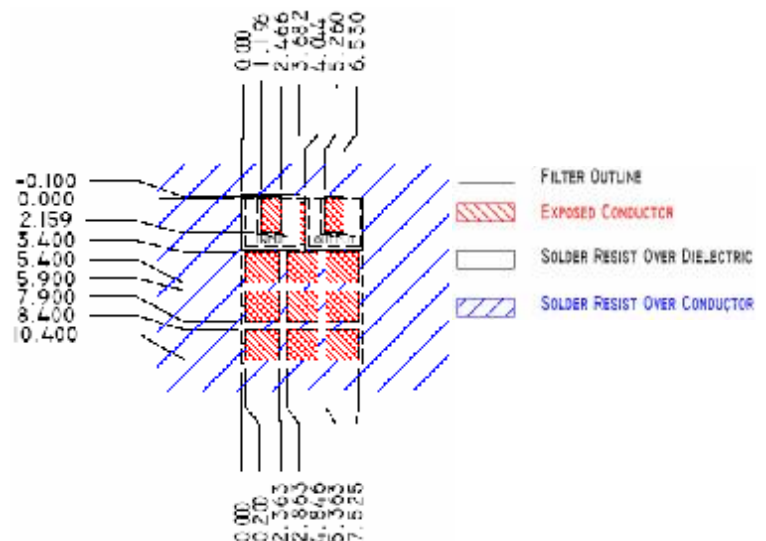


Dim	Nominal (mm)	Tolerance (mm) +/- or max
A	7.899	Max
B	10.922	Max
C	4.496	Max
D	2.032	0.127
E	2.032	0.127
F	1.778	0.127
G	0.762	0.127
I	2.286	0.127
J	0.762	0.127

Electrical response



PCB Layout



Packaging and Marking

DIMENSION	UNITS	SPECIFICATION
REEL DIAMETER	mm	330
REEL WEIGHT	kg	1.82
REEL QUANTITY	ea.	1000 Max

