



Chipsmall Limited consists of a professional team with an average of over 10 year of expertise in the distribution of electronic components. Based in Hongkong, we have already established firm and mutual-benefit business relationships with customers from,Europe,America and south Asia,supplying obsolete and hard-to-find components to meet their specific needs.

With the principle of “Quality Parts,Customers Priority,Honest Operation,and Considerate Service”,our business mainly focus on the distribution of electronic components. Line cards we deal with include Microchip,ALPS,ROHM,Xilinx,Pulse,ON,Everlight and Freescale. Main products comprise IC,Modules,Potentiometer,IC Socket,Relay,Connector.Our parts cover such applications as commercial,industrial, and automotives areas.

We are looking forward to setting up business relationship with you and hope to provide you with the best service and solution. Let us make a better world for our industry!



Contact us

Tel: +86-755-8981 8866 Fax: +86-755-8427 6832

Email & Skype: info@chipsmall.com Web: www.chipsmall.com

Address: A1208, Overseas Decoration Building, #122 Zhenhua RD., Futian, Shenzhen, China



Features

- Extended pass band
- Low loss
- High rejection

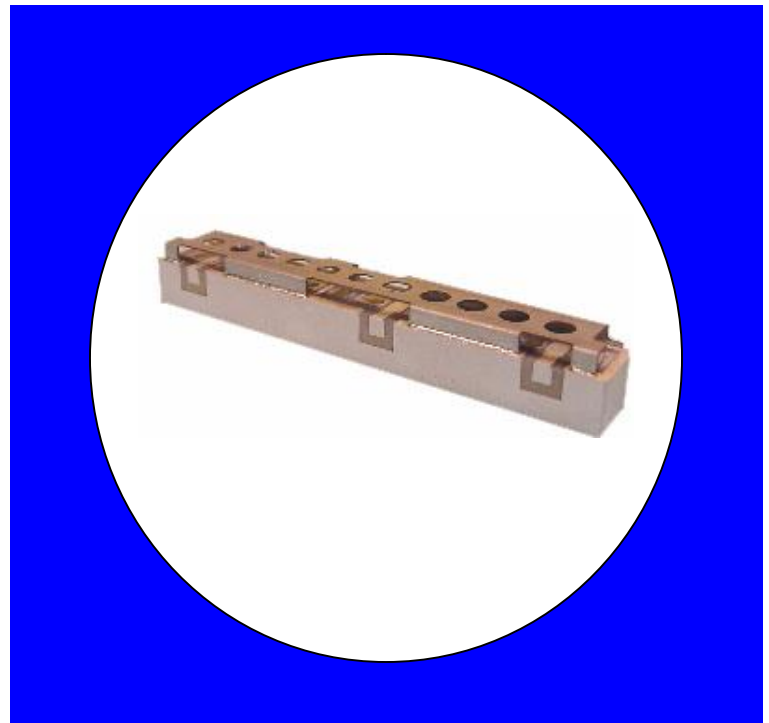
Description

Surface mount, silver (Ag) coated ceramic duplexer. Developed for use in DCS Infrastructure applications.

Weight: Approximately 30.0 grams typical

Material: Filter is composed of a ceramic block plated with Ag and a shield made of nickel silver plated steel.

Filter complies with RoHS standards.



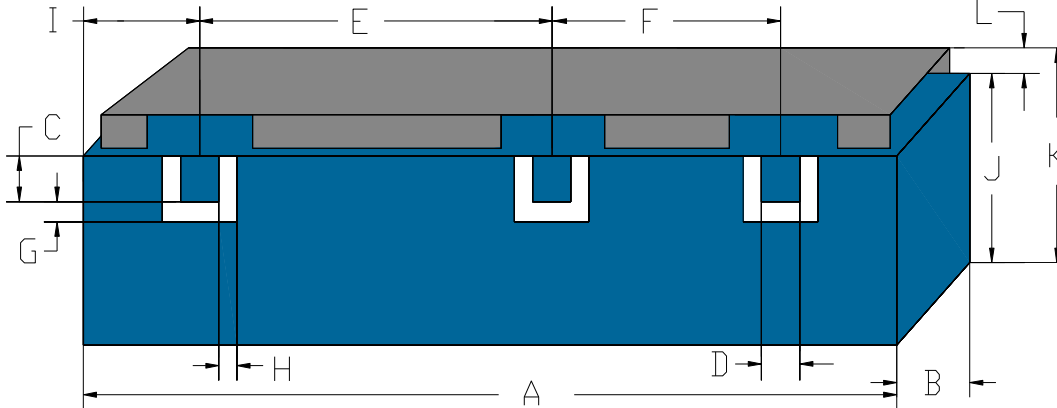
Electrical Specifications (Preliminary)

Parameter	Frequency MHz	Typical @ 25°C	Specification @ 25°C	Spec over -40°C to +85°C
Passband Iloss	1710 - 1785	-2.10	-2.25	-2.40
Passband Ripple	1710 - 1785	1.2	1.30	1.40
Passband Return Loss @ Port 1	1710 - 1785	-13.5	-12.0	-12.0
Passband Return Loss @ Port 2	1710 - 1785	-13.5	-12.0	-12.0
Attenuation	1805 - 1880	-29.0	-28.0	-28.0
Low Band Response (S21)				
Passband Iloss	1805 - 1880	-2.0	-2.2	-2.3
Passband Ripple	1805 - 1880	1.2	1.3	1.4
Passband Return Loss @ Port 1	1805 - 1880	-13.5	-12.0	-12.0
Passband Return Loss @ Port 2	1805 - 1880	-13.5	-12.0	-12.0
Attenuation	1710 - 1785	-29.0	-28.0	-28.0
Power Into any Port				5 W Max

Note: Supplier shall test each filter to the critical electrical specifications of the above table. Any subsequent audits may deviate from in value due to measurement repeatability among different test systems. Such deviations shall not exceed the following limits:

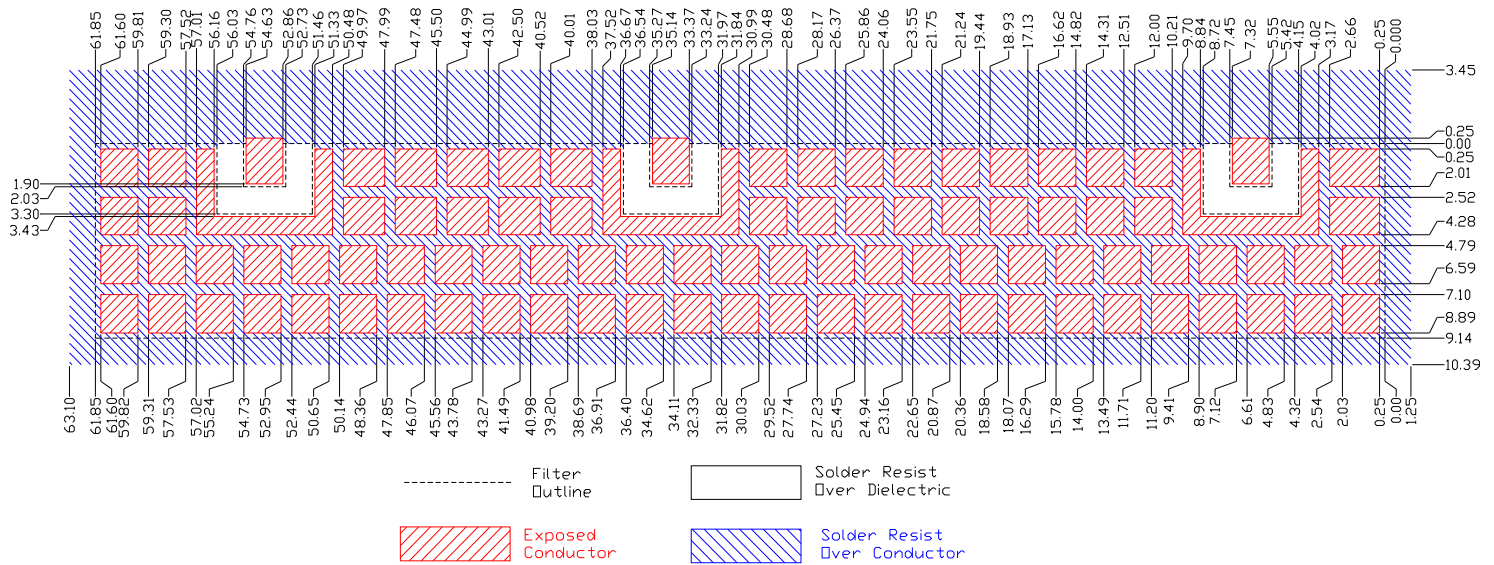
Specification Allowance	
Insertion Loss	0.1 dB
Return Loss	1.0 dB
Stopbands	1.0 dB

Mechanical Drawing



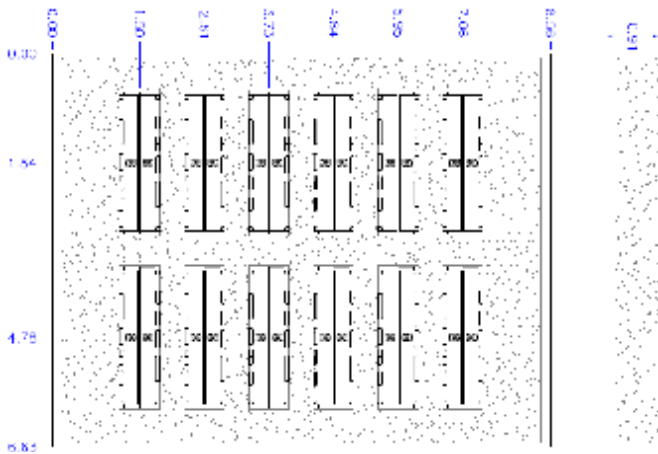
Dim	Nominal (mm)	Tolerance (mm) +/- or max
A	61.85	max
B	8.00	max
C	2.03	0.13
D	2.03	0.13
E	27.82	0.25
F	19.49	0.25
G	1.27	0.13
H	1.27	0.13
I	6.43	0.25
J	9.14	max
K	11.34	max
L	2.20	Max

PCB Layout



Packaging and Marking

Product is shipped in preformed foam trays



5 Trays containing 12 slots with 2 filters per slot. 5 Trays per box. Total 120 filters per box
 Part Marking: CTS YWW CER0694A

Electrical response

