



Chipsmall Limited consists of a professional team with an average of over 10 year of expertise in the distribution of electronic components. Based in Hongkong, we have already established firm and mutual-benefit business relationships with customers from,Europe,America and south Asia,supplying obsolete and hard-to-find components to meet their specific needs.

With the principle of “Quality Parts,Customers Priority,Honest Operation,and Considerate Service”,our business mainly focus on the distribution of electronic components. Line cards we deal with include Microchip,ALPS,ROHM,Xilinx,Pulse,ON,Everlight and Freescale. Main products comprise IC,Modules,Potentiometer,IC Socket,Relay,Connector.Our parts cover such applications as commercial,industrial, and automotives areas.

We are looking forward to setting up business relationship with you and hope to provide you with the best service and solution. Let us make a better world for our industry!



Contact us

Tel: +86-755-8981 8866 Fax: +86-755-8427 6832

Email & Skype: info@chipsmall.com Web: www.chipsmall.com

Address: A1208, Overseas Decoration Building, #122 Zhenhua RD., Futian, Shenzhen, China



Features

- Low Loss
- Low Ripple
- High Crossover Rejection

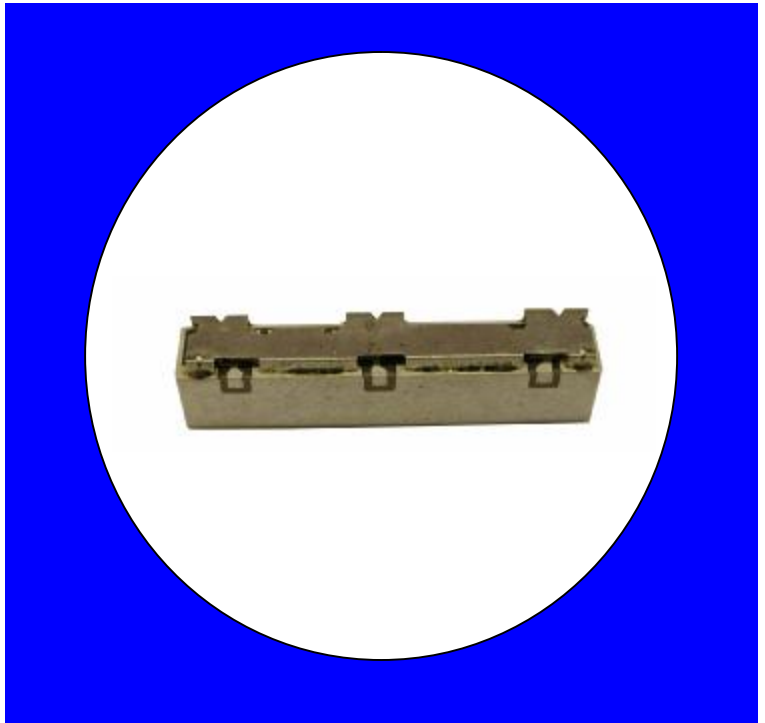
Description

Surface mount, silver (Ag) coated ceramic Duplexer.

Weight: 3.3 grams typical

Material: Filter is composed of a ceramic block coated with Ag and a shield made of nickel silver plated steel.

Filter complies with RoHS standards.



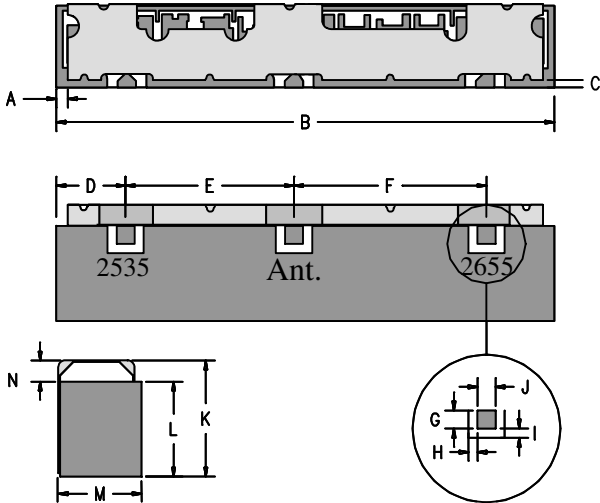
Electrical Specifications

Parameter	Frequency (MHz)	Typical @ 25°C	Spec. @ 25°C	Spec. Over -40°C to +85°C
Low Band Response				
Passband loss	2500-2570	2.2 dB	2.8 dB max	3 dB max
Passband Return Loss @ Ant	2500-2570	14 dB	12.0 dB min	12.0 dB min
Passband Return Loss @ Port 2	2500-2570	14 dB	12.0 dB min	12.0 dB min
Passband Ripple	2500-2570	1.1 dB	1.5 dB max	1.5 dB max
Attenuation	2620-2690	47.0 dB	45.0 dB min	45.0 dB min
High Band Response				
Passband loss	2620-2690	2.2 dB	2.8 dB max	3 dB max
Passband Return Loss @ Ant	2620-2690	14 dB	12.0 dB min	12.0 dB min
Passband Return Loss @ Port 3	2620-2690	14 dB	12.0 dB min	12.0 dB min
Passband Ripple	2620-2690	1.1 dB	1.5 dB max	1.5 dB max
Attenuation	2500-2570	51 dB	50 dB min	50 dB min
Isolation				
Rejection @ Low Band	2500-2570	51 dB	50 dB min	50 dB min
Rejection @ High Band	2620-2690	47 dB	45 dB min	45 dB min
Power into any port			3 Watts max	

Note: Supplier shall test each filter to the critical electrical specifications of the above table. Any subsequent audits may deviate from in value due to measurement repeatability among different test systems. Such deviations shall not exceed the following limits:

Specification Allowance	
Insertion Loss	0.1 dB
Return Loss	1.0 dB
Stopbands	1.0 dB

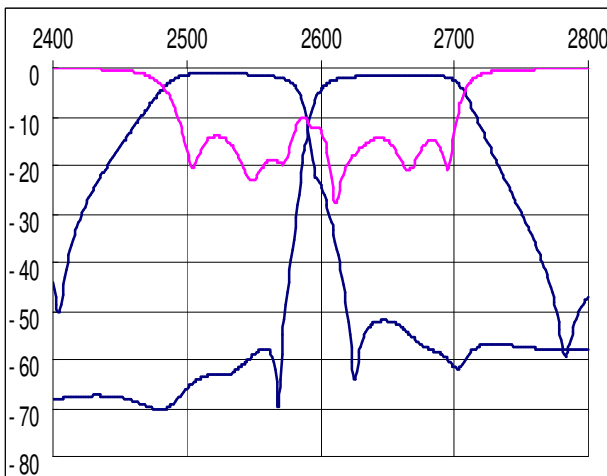
Mechanical Drawing



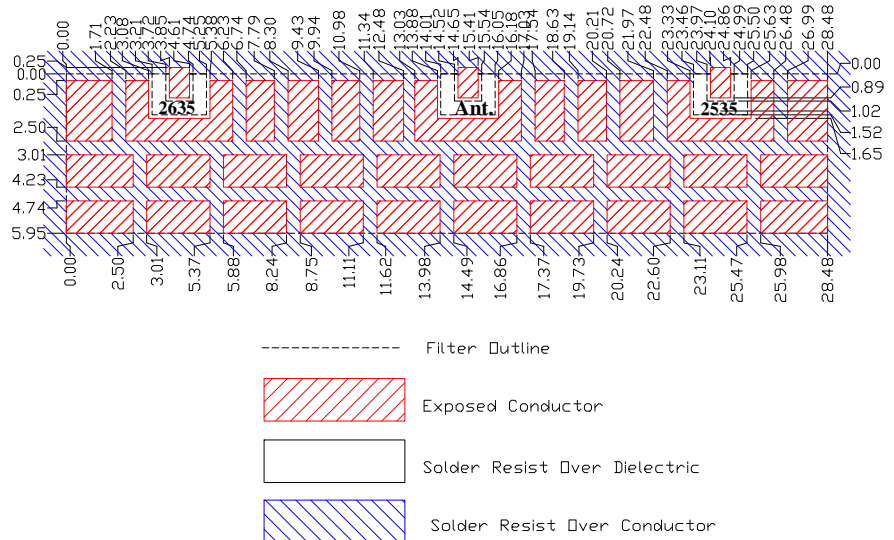
Dim	Nominal (mm)	Tolerance (mm) +/- or max
A	0.64	0.25
B	28.48	max
*C	0.33	min
D	3.90	0.3
E	9.45	0.13
F	10.80	0.13
G	1.02	0.13
H	0.51	0.13
I	0.51	0.13
J	1.02	0.13
K	5.00	max
L	4.10	max
M	4.90	max
N	1.07	0.13

*Indicates Reference Only

Electrical response

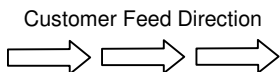
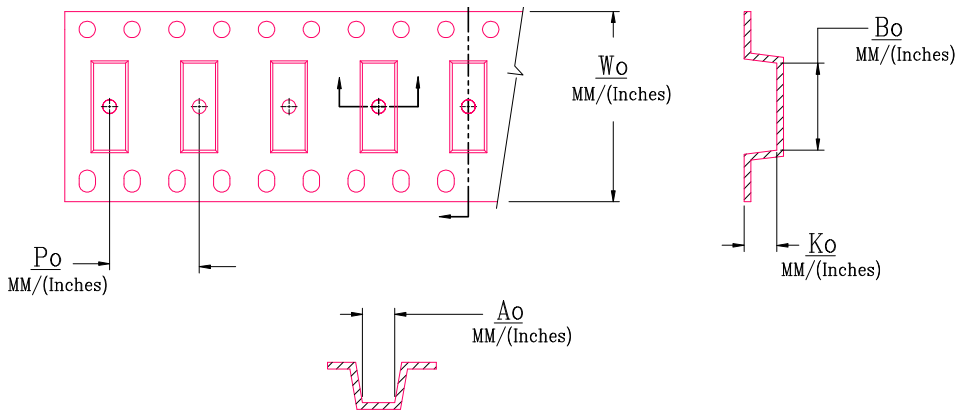


PCB Layout



Packaging and Marking

DIMENSION	UNITS	SPECIFICATION
REEL DIAMETER	mm	330
REEL WEIGHT	kg	2.5
REEL QUANTITY	ea.	500



CTS
49B
YWW

MODEL NO.	W_o	A_o	B_o	K_o	P_o
CER0849B	44.0/(1.732)	7.29/(0.287)	28.70/(1.130)	5.18/(0.204)	12.0/(0.472)