



Chipsmall Limited consists of a professional team with an average of over 10 year of expertise in the distribution of electronic components. Based in Hongkong, we have already established firm and mutual-benefit business relationships with customers from,Europe,America and south Asia,supplying obsolete and hard-to-find components to meet their specific needs.

With the principle of “Quality Parts,Customers Priority,Honest Operation,and Considerate Service”,our business mainly focus on the distribution of electronic components. Line cards we deal with include Microchip,ALPS,ROHM,Xilinx,Pulse,ON,Everlight and Freescale. Main products comprise IC,Modules,Potentiometer,IC Socket,Relay,Connector.Our parts cover such applications as commercial,industrial, and automotives areas.

We are looking forward to setting up business relationship with you and hope to provide you with the best service and solution. Let us make a better world for our industry!



## Contact us

Tel: +86-755-8981 8866 Fax: +86-755-8427 6832

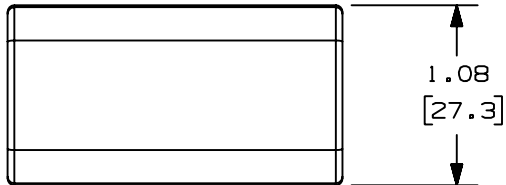
Email & Skype: info@chipsmall.com Web: www.chipsmall.com

Address: A1208, Overseas Decoration Building, #122 Zhenhua RD., Futian, Shenzhen, China



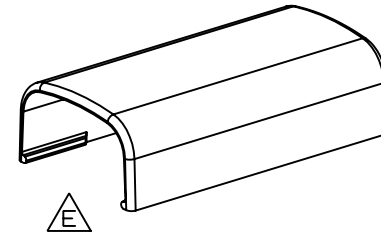
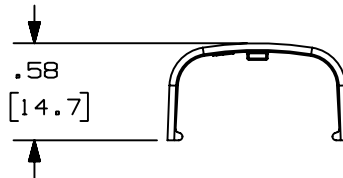
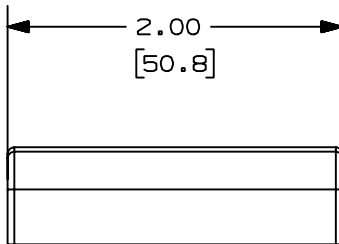
THIS COPY IS PROVIDED ON A RESTRICTED BASIS AND IS NOT TO BE USED IN ANY WAY DETRIMENTAL TO THE INTERESTS OF PANDUIT CORP.

$\triangle B$	PANDUIT P/N	WEIGHT
$\triangle C$	CF5	0.82 LB/100 PCS. (373g/100 PCS.)



$\triangle D$  NOTES:

1. SEE CURRENT CATALOG FOR ADDITIONAL PART NUMBER SUFFIXES TO INDICATE COLOR AND OR PACKAGE QUANTITY.
2. DIMENSIONS IN PARENTHESIS ARE IN METRIC.



CAD FILENAME/LAYERS D34474BC\_DC\_CF5\_01.prt

						PANDUIT CORP. TINLEY PARK, ILLINOIS		
						COUPLER FITTING (CF5) CUSTOMER DRAWING		
						UNLESS OTHERWISE SPECIFIED, DIMENSIONAL TOLERANCES ARE:		UNLESS OTHERWISE SPECIFIED, ALL DIMENSIONS ARE GIVEN IN INCHES, THIRD ANGLE PROJECTION.
6	7-2-02	JHN/URMHI	F.	REVISED MATERIAL IN DRAWING TITLE BLOCK.	16867	RGRD	RGRD	
5	8-28-00	M/SO	HIW	E. REVISED AND REDRAWN ON CAD.	16867	HIW	HIW	
4	10-3-91	DW	CF	D. REVISED NOTE AND REMOVED COLOR FROM DRAWING.	16867		CF	
3	2-28-91	DW	CF	C. REVISED COLORS: OMIT BG, LI, LG. ADDED INT. WHITE AND INT. GRAY.	16867		WJB	
2	12-2-87	LDB	WJB	B. ADDED PART NUMBERS CF5E1 AND CF5LI.	16867		WJB	
1	5-14-82	KJS	JK	A. POLYSTYRENE WAS ABS.			JAK	
R	9-14-81	KJS	HP	DRAWING RELEASED			HP	
REV	DATE	BY	CHK	DESCRIPTION	ECN - R	CUST	SUP	
						DRAWN BY KJS		MAT'L: ABS
						DATE 9-10-81		$\triangle A$ $\triangle F$
						CHK'D JK		
						SCALE FULL		DWG SIZE A
						DRAWING NO. SS-16867		