



Chipsmall Limited consists of a professional team with an average of over 10 year of expertise in the distribution of electronic components. Based in Hongkong, we have already established firm and mutual-benefit business relationships with customers from,Europe,America and south Asia,supplying obsolete and hard-to-find components to meet their specific needs.

With the principle of “Quality Parts,Customers Priority,Honest Operation,and Considerate Service”,our business mainly focus on the distribution of electronic components. Line cards we deal with include Microchip,ALPS,ROHM,Xilinx,Pulse,ON,Everlight and Freescale. Main products comprise IC,Modules,Potentiometer,IC Socket,Relay,Connector.Our parts cover such applications as commercial,industrial, and automotives areas.

We are looking forward to setting up business relationship with you and hope to provide you with the best service and solution. Let us make a better world for our industry!



## Contact us

Tel: +86-755-8981 8866 Fax: +86-755-8427 6832

Email & Skype: info@chipsmall.com Web: www.chipsmall.com

Address: A1208, Overseas Decoration Building, #122 Zhenhua RD., Futian, Shenzhen, China



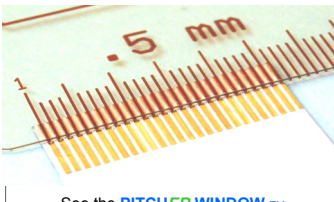
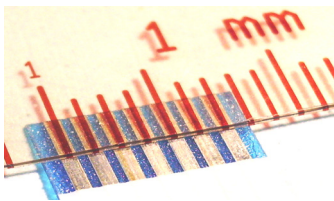
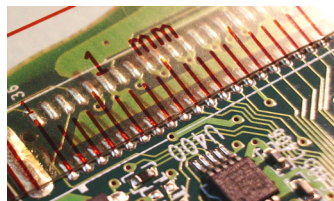
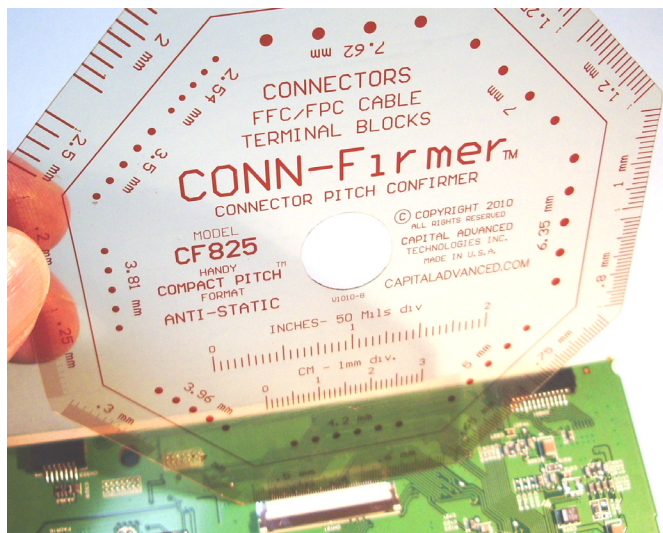
# CONN-Firmer™ MODEL CF825

## ANTI-STATIC SEE THROUGH PITCH COMPARATOR

BULLETIN  
CF825B-R1

### EASILY CHECK PITCH and SPACING of CONNECTORS, FFC/FPC CABLES, TERMINAL BLOCKS, PLUGS and PRINTED CIRCUIT BOARDS

The CONN-Firmer™ provides a simple and accurate way to check Pitch and measure dimensions on a wide variety of connectors, flat cables, plugs, terminal blocks and boards. Based on visual comparison with multiple reference points it is often more accurate and easier than other methods. The see through base and rulings permit use with side by side or overlay alignment for optimum versatility. The units flexibility and shape permit use in tight difficult locations often not possible with conventional measuring tools. When used with proper techniques the permanent ANTI-STATIC coating permits safe use in a variety of applications where metallic or conductive measuring tools could introduce ESD damage. Featuring high accuracy photo-molecular imaging and a special dimensionally stable polymer base the unit makes a great addition to the workbench in both prototype and production environments.



See the **PITCHER WINDOW™** products from **CAPITAL** for enhanced ways to use this tool.

### FEATURES MANY POPULAR CONNECTOR, CABLE, and TERMINAL PITCHES as well as INCH and METRIC RULERS

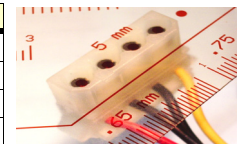
Also may be used to read pitch on many types of **LCD's, DISPLAYS, HEADERS, MEMBRANE SWITCH CONNECTORS, EDGE CONNECTORS, INTERPOSERS** and more. See the table below for a complete list of pitches represented.

**GROUNDING:** Good ESD safe techniques including personal grounding and grounded work surfaces when using unit in situations where ESD may damage components or equipment should be used.

Anti-Static dissipative test range  
10<sup>6</sup> – 10<sup>9</sup> ohms P/S  
per ANSI/ESDA S11.11 & DIN EN  
100 015/1

**CAUTION:** Excessive abrasion, creasing, or rough handling may damage anti-static coating. Do not expose to water, solvents, or other liquids. Clean by blotting with soft cloth dampened with Approved cleaner avoiding excessive rubbing or abrasion. See web site for additional information

OUTER EDGE	INNER RING
.2 MM	2.54 MM
.25 MM	3.5 MM
.3 MM	3.81 MM
.4 MM	3.96 MM
.5 MM	4.2 MM
.6 MM	5 MM
.65 MM	6.35 MM
.75 MM	7 MM
.8 MM	7.62 MM
1 MM	
1.2 MM	
1.25 MM	<b>RULERS</b>
1.27 MM	
1.5 MM	2 INCHES 50 Mils/Div.
2 MM	3 CM 1 MM / Div.
2.5 MM	



Copyright 2010 by Capital Advanced Technologies, Inc. All Rights Reserved. CONN-Firmer™, Stop Guessing™, Compact Pitch™ and PITCHER WINDOW™ are Trademarks of Capital Advanced Technologies, Inc. All other Trademarks are the property of their respective owners. Availability, specifications, and prices are subject to change without notice. All information given is believed to be accurate but is not guaranteed. The user of information given or products represented by such information is responsible for determining the suitability of said information or products for a given purpose. No permission is granted or implied regarding the use of intellectual property or patents owned by Capital Advanced Technologies, Inc. or others by the provision of information or products herein.

MADE  
IN  
U.S.A.

**CAPITAL ADVANCED TECHNOLOGIES, INC.**

[WWW.CapitalAdvanced.com](http://WWW.CapitalAdvanced.com)

© COPYRIGHT 2010