



Chipsmall Limited consists of a professional team with an average of over 10 year of expertise in the distribution of electronic components. Based in Hongkong, we have already established firm and mutual-benefit business relationships with customers from,Europe,America and south Asia,supplying obsolete and hard-to-find components to meet their specific needs.

With the principle of "Quality Parts,Customers Priority,Honest Operation,and Considerate Service",our business mainly focus on the distribution of electronic components. Line cards we deal with include Microchip,ALPS,ROHM,Xilinx,Pulse,ON,Everlight and Freescale. Main products comprise IC,Modules,Potentiometer,IC Socket,Relay,Connector.Our parts cover such applications as commercial,industrial, and automotives areas.

We are looking forward to setting up business relationship with you and hope to provide you with the best service and solution. Let us make a better world for our industry!



Contact us

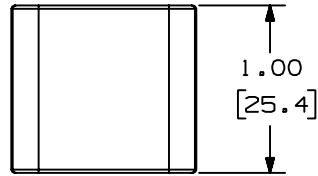
Tel: +86-755-8981 8866 Fax: +86-755-8427 6832

Email & Skype: info@chipsmall.com Web: www.chipsmall.com

Address: A1208, Overseas Decoration Building, #122 Zhenhua RD., Futian, Shenzhen, China



THIS COPY IS PROVIDED ON A RESTRICTED BASIS AND IS NOT TO BE USED IN ANY WAY DETRIMENTAL TO THE INTERESTS OF PANDUIT CORP.

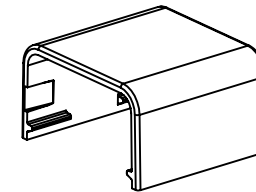
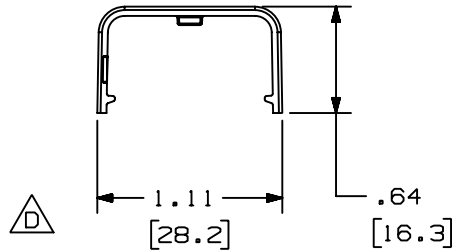
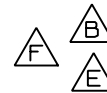


PANDUIT PART NO.	WEIGHT
CFX5	.5 LB/100 PCS (249 g/100 PCS)



NOTES:

- SEE CURRENT CATALOG FOR ADDITIONAL PART NUMBER SUFFIXES TO INDICATE COLOR AND OR PACKAGE QUANTITY.
- THIS PRODUCT IS INTENDED TO BE USED WITH PANDUIT TYPE LD5 AND LDP5 RACEWAY.
- NOMINAL WALL THICKNESSES: .055 [1.4].
- DIMENSIONS IN PARENTHESIS ARE IN METRIC.



CAD FILENAME/LAYERS D35012BJ_LD_CFX5_03.PRT

PANDUIT CORP. TINLEY PARK, ILLINOIS

COUPLER FITTING COVER (CFX5)
CUSTOMER DRAWING

REV	DATE	BY	CHK	DESCRIPTION	ECN	CHK	CUST	SUP
3	03-15-04	JHEP	RGRO	F. REMOVED CD5 FROM NOTE 2	35012-10	RGRO	RGRO	
--	-----	-----	-----	E. NOTE 2 WAS LD2P5. D. CORRECTED VIEWS SHOWING 2D PICTURES.	-----	-----	-----	
2	07-06-99	HIW	HIW	C. REVISED MATERIAL WAS PVC.	35012-10	HIW	HIW	
1	09-23-96	JBA	CEF	B. ADDED LD55 TO NOTE #2. A. REV'D P/N: WAS CFC5.	35012-10	CEF	CEF	
R	03-04-96	DW	CEF	RELEASED TO PRODUCTION	35012-10	CEF		

UNLESS OTHERWISE SPECIFIED,
DIMENSIONAL TOLERANCES ARE:
(.X) ± (.XXX) ±.015 [.4]
(.XX) ±.03 [.8] ANGLES ±

UNLESS OTHERWISE SPECIFIED,
ALL DIMENSIONS ARE GIVEN
IN INCHES, THIRD ANGLE PROJECTION.

DRAWN BY
DW

MAT'L:

SCALE
NONE

DATE
03-04-96

ABS/PC

DRAWING NO.

35012-10

DWG

A
SIZE

CHECKED BY
CEF

