



Chipsmall Limited consists of a professional team with an average of over 10 year of expertise in the distribution of electronic components. Based in Hongkong, we have already established firm and mutual-benefit business relationships with customers from,Europe,America and south Asia,supplying obsolete and hard-to-find components to meet their specific needs.

With the principle of “Quality Parts,Customers Priority,Honest Operation,and Considerate Service”,our business mainly focus on the distribution of electronic components. Line cards we deal with include Microchip,ALPS,ROHM,Xilinx,Pulse,ON,Everlight and Freescale. Main products comprise IC,Modules,Potentiometer,IC Socket,Relay,Connector.Our parts cover such applications as commercial,industrial, and automotives areas.

We are looking forward to setting up business relationship with you and hope to provide you with the best service and solution. Let us make a better world for our industry!



Contact us

Tel: +86-755-8981 8866 Fax: +86-755-8427 6832

Email & Skype: info@chipsmall.com Web: www.chipsmall.com

Address: A1208, Overseas Decoration Building, #122 Zhenhua RD., Futian, Shenzhen, China

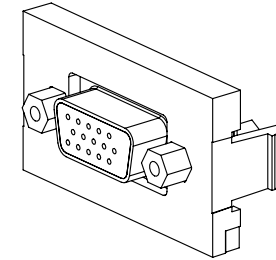
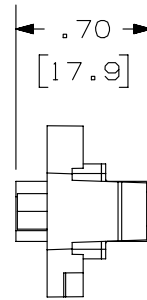
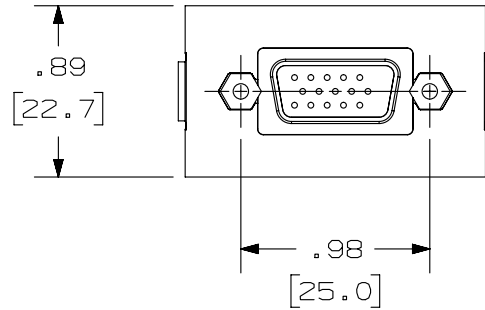
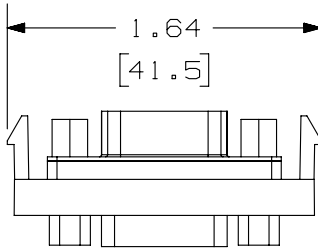


THIS COPY IS PROVIDED ON A RESTRICTED BASIS AND IS NOT TO BE USED IN ANY WAY DETRIMENTAL TO THE INTERESTS OF PANDUIT CORP.

	PANDUIT P/N	WEIGHT
A	CHD15HDC**	.28 LB/10 PCS (125.9 g/10 PCS)
B	IAPHD15HDCWH	

NOTES:

1. SEE CURRENT CATALOG FOR ADDITIONAL PART NUMBER SUFFIXES TO INDICATE COLOR AND OR PACKAGE QUANTITY.
2. SEE CATALOG FOR COMPLETE LIST OF PARTS APPLICABLE FOR USE WITH THIS PART.
3. DIMENSIONS IN PARENTHESES ARE IN METRIC.
4. PART TO WORK WITH ALL PANDUIT FACEPLATE FRAMES.



PART NUMBER		SEE TABLE	
TITLE			
C 15 PIN HIGH DENSITY SVGA 1/3 INSERT COUPLER			
CUSTOMER DRAWING			
ITEM REVISION NAME		M01095AB/02	
DATASET FILE NAME		M01095AB_DC07/02C	
UNLESS OTHERWISE SPECIFIED, DIMENSIONAL TOLERANCES ARE: IN [mm]		MATERIAL:	
.x ± .xxx ± .010 [.3]		DRAWING NUMBER:	
.xx ± .03 [.8] ANGES ±		01095-07 D	
THIRD ANGLE PROJECTION		SHT 1 OF 1	
DRAWN BY	DATE	CHK	SCALE
JSP	1-26-01	PBD	NONE
REV	DATE	BY	CHK
3	7-31-14	BJN	JSP
2	6-6-11	BJN	JSP
1	2-16-01	JSP	PBD
R	1-26-01	JSP	PBD
DESCRIPTION		ECN	
C. REMOVED "MINI-COM" FROM TITLE D. UPDATD TITLE BLOCK		01095-07	
B. ADDED SUPPLEMENTAL P/N IAPHD9CWH		01095-07	
A. ADDED "C" TO PART NO.		01095-07	
RELEASED TO PRODUCTION		01095-07	

D10100DA/14

2

1

2

1