



Chipsmall Limited consists of a professional team with an average of over 10 year of expertise in the distribution of electronic components. Based in Hongkong, we have already established firm and mutual-benefit business relationships with customers from,Europe,America and south Asia,supplying obsolete and hard-to-find components to meet their specific needs.

With the principle of “Quality Parts,Customers Priority,Honest Operation,and Considerate Service”,our business mainly focus on the distribution of electronic components. Line cards we deal with include Microchip,ALPS,ROHM,Xilinx,Pulse,ON,Everlight and Freescale. Main products comprise IC,Modules,Potentiometer,IC Socket,Relay,Connector.Our parts cover such applications as commercial,industrial, and automotives areas.

We are looking forward to setting up business relationship with you and hope to provide you with the best service and solution. Let us make a better world for our industry!



## Contact us

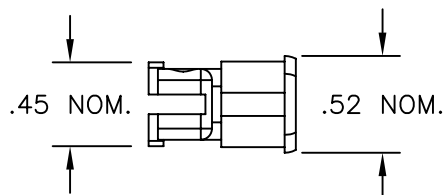
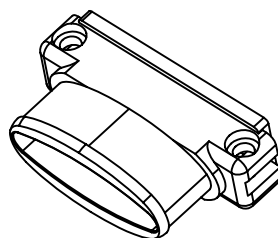
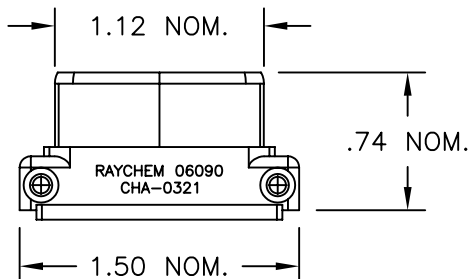
Tel: +86-755-8981 8866 Fax: +86-755-8427 6832

Email & Skype: info@chipsmall.com Web: www.chipsmall.com

Address: A1208, Overseas Decoration Building, #122 Zhenhua RD., Futian, Shenzhen, China



REVISION			
REV	DESCRIPTION	DATE	APPROVED
A	INITIAL RELEASE PER ECO# 07-013785	06JUN2007	T. RATZLAFF
B	PER ECO# 07-023644	Oct/8/07	M.HIGGY



NOTES:

1. APPLICATION: FOR USE ON 1" MTC SHELLS, ELECTROLESS NICKEL PLATED.
2. BODY: ALUMINUM, ELECTROLESS NICKEL PLATE PER RAYCHEM ES 61400/16.
3. BANDSTRAP (NOT SHOWN): CRES-Lock BND-1225, CRES, PASSIVATED.
4. SCREWS (NOT SHOWN): 4-40 SOCKET HEAD CAP SCREW, CRES, PASSIVATED, SELF-LOCKING.
5. MARKINGS: BLACK INK.
6. MEETS APPLICABLE REQUIREMENTS OF RAYCHEM SPECIFICATION C-6114.
7. WEIGHTS:  
 BACKSHELL: 7.5gm (NOM)  
 SCREWS (2): 1.2gm (NOM), TOTAL  
 BANDSTRAP (INSTALLED): 7.5gm (NOM)

If this document is printed it becomes uncontrolled. Check for the latest revision

© 2007 TYCO ELECTRONICS CORPORATION. ALL RIGHTS RESERVED.

CUSTOMER DRAWING				
UNLESS OTHERWISE SPECIFIED DIMENSIONS ARE INCHES. METRIC DIMENSIONS ARE IN BRACKETS.  DECIMAL TOLERANCES .XXX ± 0.005 [ 0.13 mm] .XX ± 0.010 [ 0.25 mm] .X ± 0.020 [ 0.50 mm]  ANGLE TOLERANCE .X ± 0.5 DEG.  WEIGHT, INSTALLED (NOM) LBS. 0.0417 [ 18.9 gm]	DRAWN T RATZLAFF	DATE 06JUN2007		
	MATERIAL SEE NOTES		TITLE MTC BACKSHELL ADAPTER, CRES-Lock BAND	Raychem Interconnect <small>300 Constitution Drive            Menlo Park, CA 94025 U.S.A</small>
FINISH SEE NOTES		THIRD ANGLE PROJECTION 	SIZE A	CAGE CODE 06090
CAD FILE CHA-0321_CD_B		DWG. NO. CHA-0321		
DO NOT SCALE THIS DRAWING			SHEET 1 OF 1	