



Chipsmall Limited consists of a professional team with an average of over 10 year of expertise in the distribution of electronic components. Based in Hongkong, we have already established firm and mutual-benefit business relationships with customers from,Europe,America and south Asia,supplying obsolete and hard-to-find components to meet their specific needs.

With the principle of “Quality Parts,Customers Priority,Honest Operation,and Considerate Service”,our business mainly focus on the distribution of electronic components. Line cards we deal with include Microchip,ALPS,ROHM,Xilinx,Pulse,ON,Everlight and Freescale. Main products comprise IC,Modules,Potentiometer,IC Socket,Relay,Connector.Our parts cover such applications as commercial,industrial, and automotives areas.

We are looking forward to setting up business relationship with you and hope to provide you with the best service and solution. Let us make a better world for our industry!



## Contact us

Tel: +86-755-8981 8866 Fax: +86-755-8427 6832

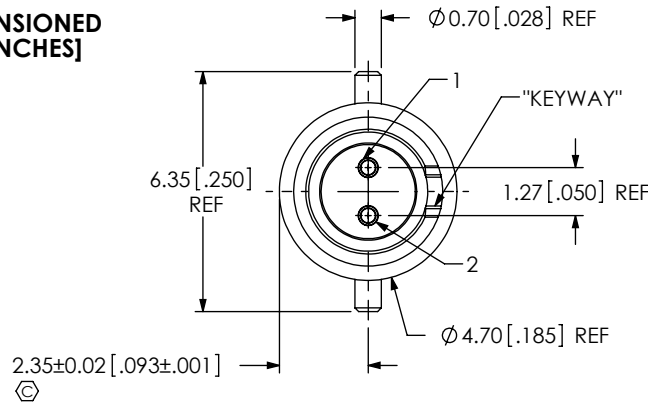
Email & Skype: info@chipsmall.com Web: www.chipsmall.com

Address: A1208, Overseas Decoration Building, #122 Zhenhua RD., Futian, Shenzhen, China



DESIGNED & DIMENSIONED  
IN MILLIMETERS [INCHES]

DO NOT  
SCALE FROM  
THIS PRINT



**CJT-T-P-XX-ST-TH1**

INTERFACE  
-J: JACK

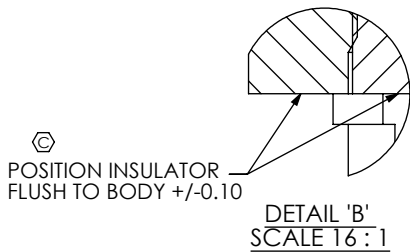
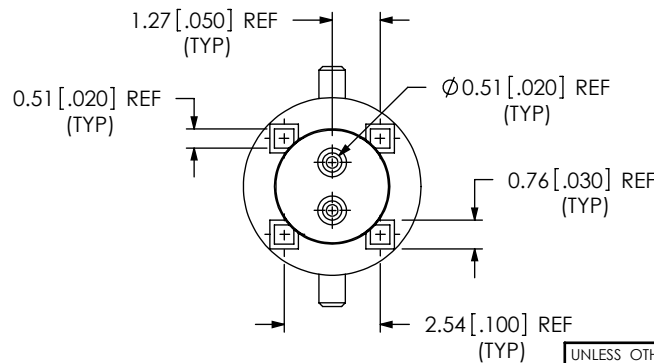
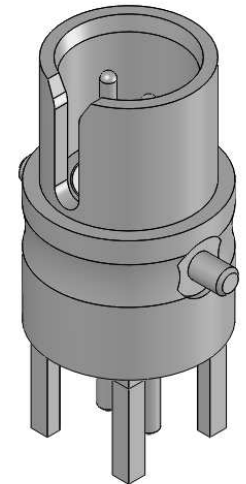
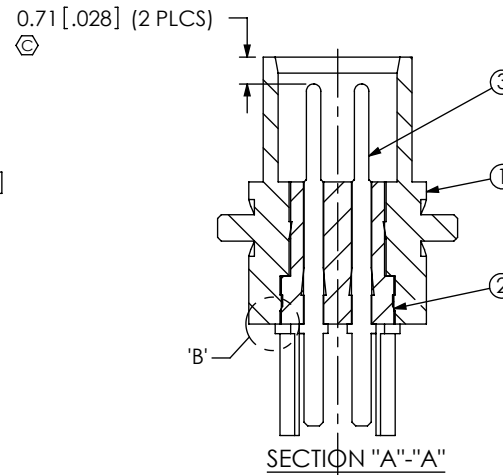
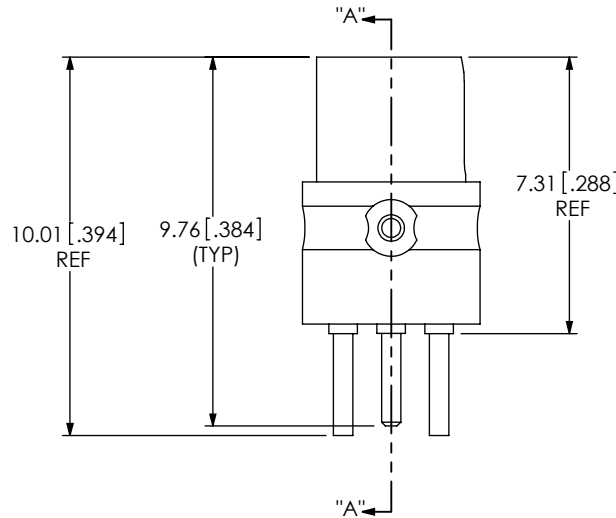
GENDER  
-T: TERMINAL

TYPE  
-P: PCB

TERMINATION  
-TH1: THROUGH HOLE

ORIENTATION  
-ST: STRAIGHT

PLATING SPECIFICATION  
-HH: HEAVY GOLD / HEAVY GOLD  
30µ" Au / 50µ" Ni MIN ON PIN  
30µ" Au / 50µ" Ni MIN ON OUTER CONTACT  
-GF: GOLD / FLASH GOLD  
10µ" Au / 50µ" Ni MIN ON PIN  
3µ" Au / 50µ" Ni MIN ON OUTER CONTACT  
(SEE TABLE 1)



**TABLE 1**

ITEM	COMPONENT	-HH	-GF	QTY
1	SHELL	CJT-T-P-H-ST-TH1-SHL	CJT-T-P-F-ST-TH1-SHL	1
2	INSULATOR	CJT-INS-001		2
3	CONTACT	CJT-T-P-H-ST-TH1-PIN	CJT-T-P-G-ST-TH1-PIN	1

NOTES:

- ① REPRESENTS A CRITICAL DIMENSION.
- MINIMUM PUSHOUT FORCE FOR CENTER CONTACT: 7 N [1.57 LB].  
INSULATOR: 20 N [4.5 LB].
- PRODUCT TO BE PACKAGED PER PACKAGING STANDARD CO-HD-WI-3040-M.  
TRAY: TY-SMA001-1,  
COVER: TY-SMA001-2.

UNLESS OTHERWISE SPECIFIED,  
DIMENSIONS ARE IN MILLIMETERS.

TOLERANCES ARE:

DECIMALS ANGLES  
X.X: ±0.3 [0.1] 5°  
X.XX: ±0.13 [0.05]  
X.XXX: ±0.051 [0.020]

PROPRIETARY NOTE

THIS DOCUMENT CONTAINS INFORMATION  
CONFIDENTIAL AND PROPRIETARY TO  
SAMTEC, INC. AND SHALL NOT BE REPRODUCED  
OR TRANSFERRED TO OTHER DOCUMENTS OR  
DISCLOSED TO OTHERS OR USED FOR ANY  
PURPOSE OTHER THAN THAT WHICH IT WAS  
OBTAINED WITHOUT THE EXPRESSED WRITTEN  
CONSENT OF SAMTEC, INC.



520 PARK EAST BLVD, NEW ALBANY, IN 47150  
PHONE: 812-944-6733 FAX: 812-948-5047  
e-Mail: info@SAMTEC.com code 55322

MATERIAL: DO NOT SCALE DRAWING SHEET SCALE: 5:1

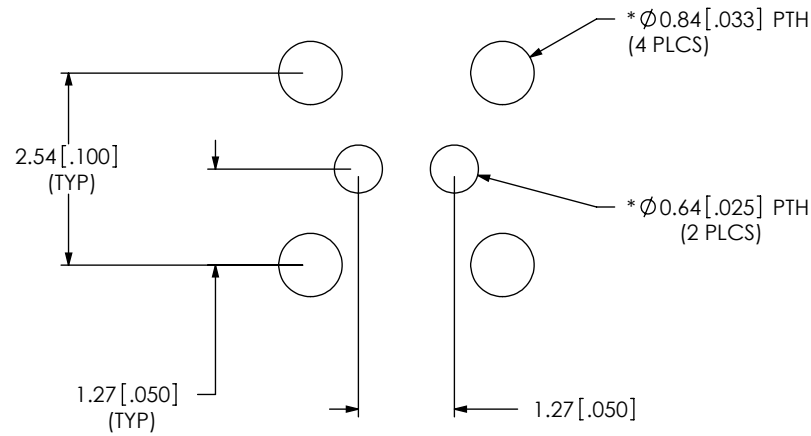
CONTACT: PHOS BRONZE  
OTHER METAL: BRASS  
DIELECTRIC: PTFE

DESCRIPTION:  
STRAIGHT CIRCULAR JACK TWINAX

DWG. NO.  
**CJT-T-P-XX-ST-TH1**

BY: ALVIN W 12/03/2010 SHEET 1 OF 2

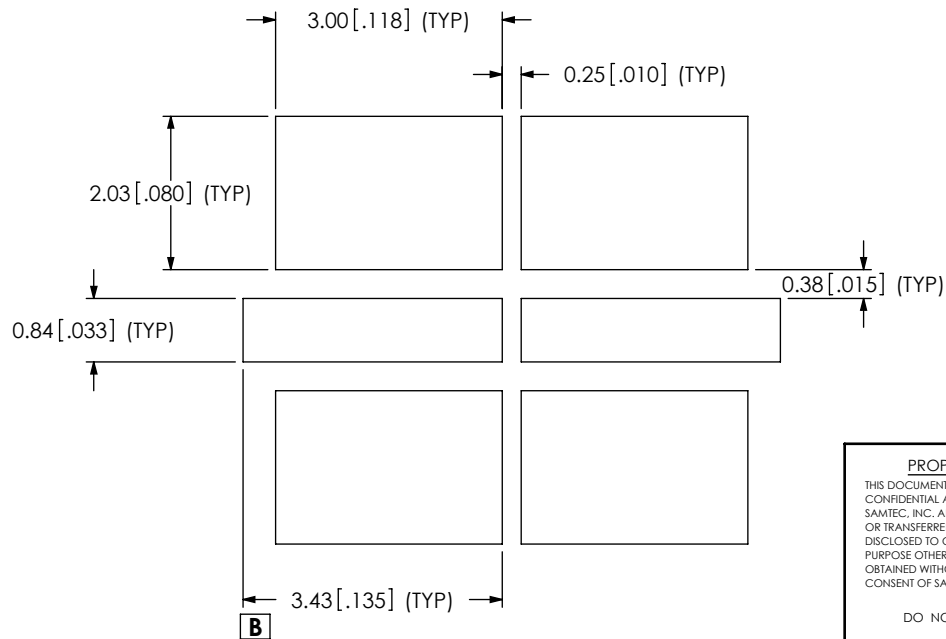
# RECOMMENDED PCB LAYOUT



\* TO BE SOLDERED USING PASTE-IN-HOLE TECHNOLOGY.

# RECOMMENDED STENCIL LAYOUT

NOTE: STENCIL TO BE 0.127 [.005] THICK



**PROPRIETARY NOTE**

THIS DOCUMENT CONTAINS INFORMATION CONFIDENTIAL AND PROPRIETARY TO SAMTEC, INC. AND SHALL NOT BE REPRODUCED OR TRANSFERRED TO OTHER DOCUMENTS OR DISCLOSED TO OTHERS OR USED FOR ANY PURPOSE OTHER THAN THAT WHICH IT WAS OBTAINED WITHOUT THE EXPRESSED WRITTEN CONSENT OF SAMTEC, INC.

DO NOT SCALE DRAWING

SHEET SCALE: 10:1



520 PARK EAST BLVD, NEW ALBANY, IN 47150  
 PHONE: 812-944-6733 FAX: 812-948-5047  
 e-Mail info@SAMTEC.com code 55322

DESCRIPTION:  
**STRAIGHT CIRCULAR JACK TWINAX**

DWG. NO.  
**CJT-T-P-XX-ST-TH1**

BY: ALVIN W 12/03/2010 SHEET 2 OF 2