



Chipsmall Limited consists of a professional team with an average of over 10 year of expertise in the distribution of electronic components. Based in Hongkong, we have already established firm and mutual-benefit business relationships with customers from,Europe,America and south Asia,supplying obsolete and hard-to-find components to meet their specific needs.

With the principle of “Quality Parts,Customers Priority,Honest Operation,and Considerate Service”,our business mainly focus on the distribution of electronic components. Line cards we deal with include Microchip,ALPS,ROHM,Xilinx,Pulse,ON,Everlight and Freescale. Main products comprise IC,Modules,Potentiometer,IC Socket,Relay,Connector.Our parts cover such applications as commercial,industrial, and automotives areas.

We are looking forward to setting up business relationship with you and hope to provide you with the best service and solution. Let us make a better world for our industry!



Contact us

Tel: +86-755-8981 8866 Fax: +86-755-8427 6832

Email & Skype: info@chipsmall.com Web: www.chipsmall.com

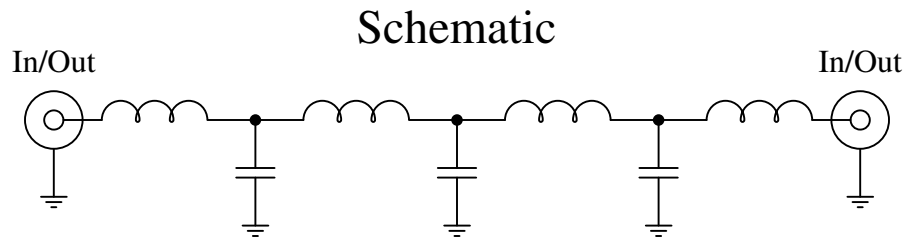
Address: A1208, Overseas Decoration Building, #122 Zhenhua RD., Futian, Shenzhen, China



Part Number: CLPFL-1000

Low Pass Range
DC to 1000MHz

New
Low Pass Filters



Features:

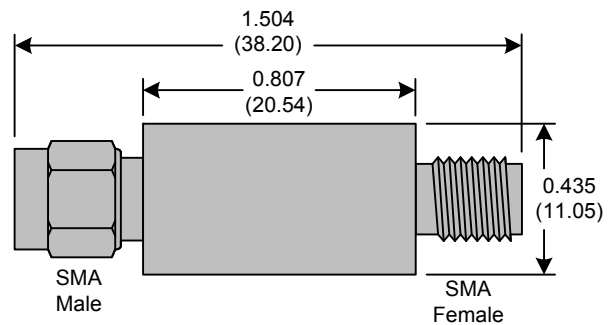
- 7th Order Butterworth Response
- 50Ω SMA Connectors

Applications:

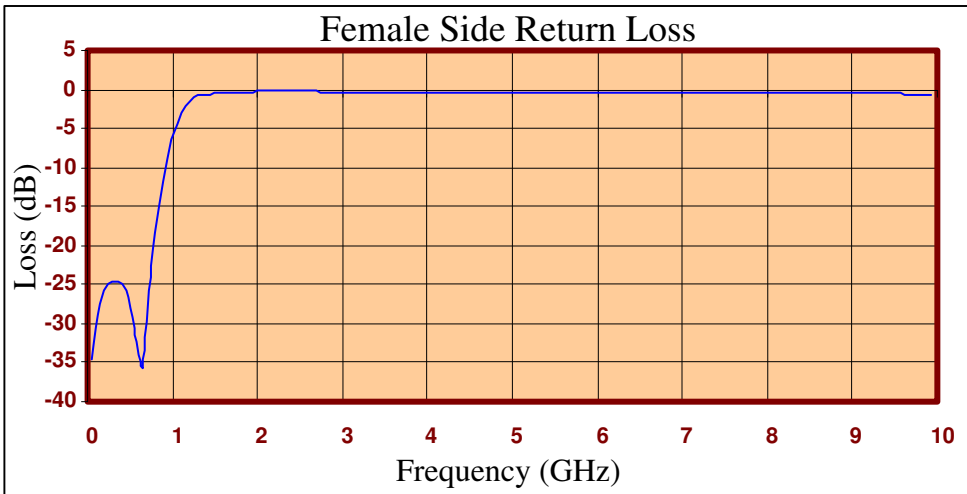
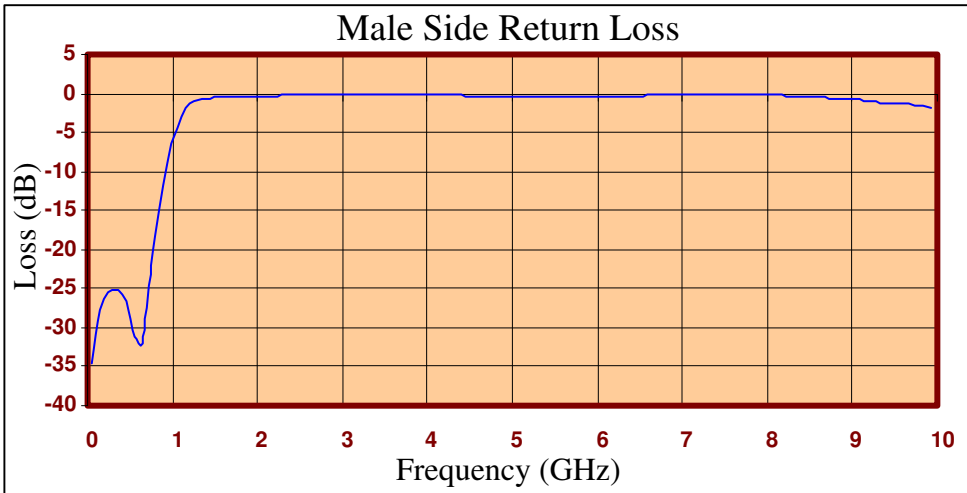
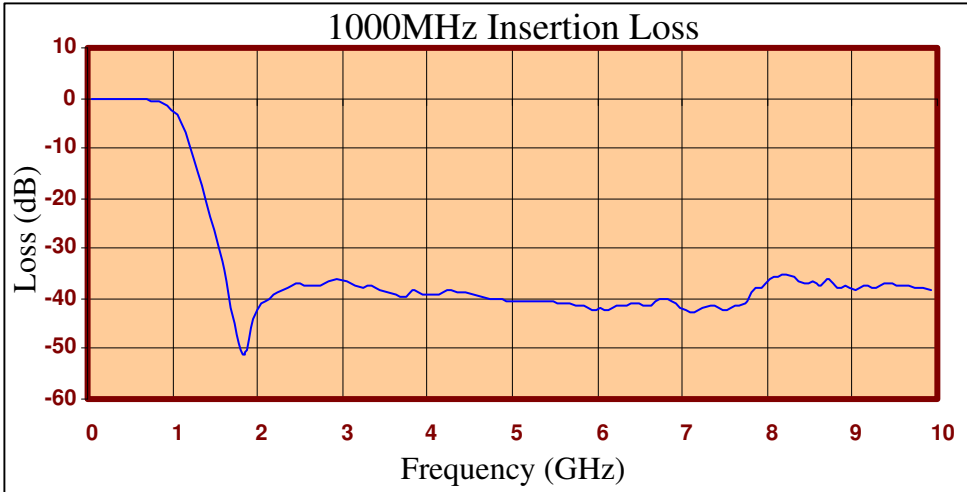
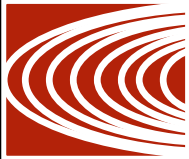
- Test Equipment
- Lab Use

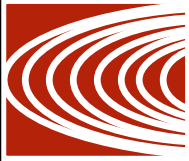
Maximum Ratings:

- +36dBm (4 Watts)
- Operating Temperature: -40°C to 85°C
- Storage Temperature: -55°C to 100°C



Crystek's new line of Low Pass Filters are designed in a rugged SMA housing. This filter line has excellent out-of-band rejection. Designed for Test Equipment and General Lab Use.





FREQ (MHz)	INSERTION LOSS (dB)	Male Return Loss (dB)	Female Return Loss (dB)
50.000	-0.05	-34.53	-34.56
249.500	-0.17	-25.41	-25.00
449.000	-0.23	-26.73	-25.90
648.500	-0.34	-32.01	-35.42
848.000	-0.66	-14.95	-15.00
947.750	-1.38	-8.99	-9.00
1047.500	-3.15	-4.43	-4.48
1247.000	-12.22	-0.97	-1.06
1446.500	-23.68	-0.56	-0.59
1546.250	-29.31	-0.50	-0.50
1646.000	-36.37	-0.45	-0.43
1845.500	-51.18	-0.38	-0.32
2045.000	-40.93	-0.32	-0.25
2244.500	-38.57	-0.27	-0.23
2444.000	-36.86	-0.24	-0.23
2643.500	-37.37	-0.21	-0.27
3042.500	-36.59	-0.16	-0.35
3345.750	-37.44	-0.11	-0.41
3641.000	-39.34	-0.05	-0.44
4040.000	-38.96	-0.09	-0.38
4339.250	-38.53	-0.24	-0.36
4638.500	-39.64	-0.32	-0.38
5037.500	-40.50	-0.37	-0.47
5336.750	-40.65	-0.35	-0.50
5636.000	-40.99	-0.35	-0.49
6035.000	-42.05	-0.32	-0.42
6334.250	-41.40	-0.29	-0.35
6633.500	-41.31	-0.27	-0.30
7032.500	-42.40	-0.23	-0.30
7331.750	-41.36	-0.21	-0.32
7631.000	-41.25	-0.19	-0.39
8030.000	-36.13	-0.24	-0.47
8329.250	-35.74	-0.28	-0.45
8628.500	-37.38	-0.49	-0.43
9027.500	-38.37	-0.82	-0.41
9326.750	-37.20	-1.13	-0.47
9626.000	-37.33	-1.41	-0.60
9925.250	-38.40	-1.85	-0.83

Product Control:

Crystek Part Number:	CLPFL-1000	Release Date:	10-Jan-11
Revision Level:	A	Responsible:	K. Piotrowicz

