



Chipsmall Limited consists of a professional team with an average of over 10 year of expertise in the distribution of electronic components. Based in Hongkong, we have already established firm and mutual-benefit business relationships with customers from,Europe,America and south Asia,supplying obsolete and hard-to-find components to meet their specific needs.

With the principle of “Quality Parts,Customers Priority,Honest Operation,and Considerate Service”,our business mainly focus on the distribution of electronic components. Line cards we deal with include Microchip,ALPS,ROHM,Xilinx,Pulse,ON,Everlight and Freescale. Main products comprise IC,Modules,Potentiometer,IC Socket,Relay,Connector.Our parts cover such applications as commercial,industrial, and automotives areas.

We are looking forward to setting up business relationship with you and hope to provide you with the best service and solution. Let us make a better world for our industry!



Contact us

Tel: +86-755-8981 8866 Fax: +86-755-8427 6832

Email & Skype: info@chipsmall.com Web: www.chipsmall.com

Address: A1208, Overseas Decoration Building, #122 Zhenhua RD., Futian, Shenzhen, China



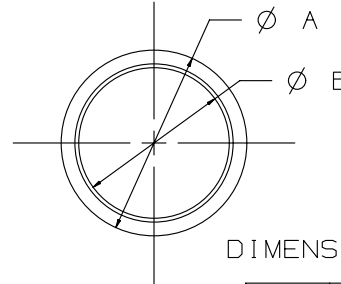
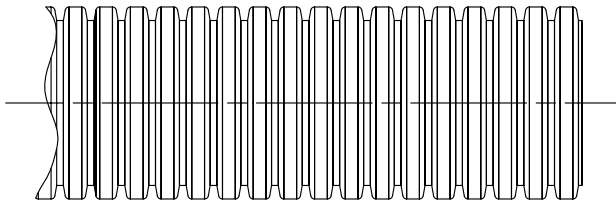
THIS COPY IS PROVIDED ON A RESTRICTED BASIS AND IS NOT TO BE USED IN ANY WAY DETRIMENTAL TO THE INTERESTS OF PANDUIT CORP.

MATERIAL: NYLON 6

MATERIAL: POLYETHYLENE

| PART NO. | DIMENSIONS | | WALL THICKNESS | WEIGHT lbs/100 ft (g)/100 ft |
|------------|------------------|------------------|--------------------------------|------------------------------------|
| | A | B | | |
| CLTS25N * | 0.398 (10.10) | 0.284 (7.20) | 0.007 - 0.020 (0.18 - 0.51) | 0.81 (370.0) |
| CLTS35N * | 0.504 (12.79) | 0.350 (8.88) | 0.006 - 0.025 (0.15 - 0.64) | 1.28 (580.0) |
| CLTS38N * | 0.524 (13.30) | 0.394 (9.99) | 0.007 - 0.025 (0.18 - 0.64) | 1.47 (670.0) |
| CLTS50N * | 0.654 (16.60) | 0.512 (12.99) | 0.007 - 0.020 (0.18 - 0.51) | 1.98 (900.0) |
| CLTS62N * | 0.847 (21.05) | 0.664 (16.85) | 0.007 - 0.020 (0.18 - 0.51) | 2.39 (1085.0) |
| CLTS75N * | 0.941 (23.90) | 0.767 (19.47) | 0.007 - 0.020 (0.18 - 0.51) | 2.75 (1250.0) |
| CLTS100N * | 1.103 (28.00) | 0.912 (23.15) | 0.008 - 0.030 (0.20 - 0.76) | 3.70 (1680.0) |
| CLTS125N * | 1.536 (39.00) | 1.278 (32.45) | 0.008 - 0.030 (0.20 - 0.76) | 6.03 (2740.0) |
| CLTS150N * | 1.851 (47.00) | 1.575 (39.99) | 0.010 - 0.032 (0.25 - 0.81) | 7.39 (3360.0) |

| PART NO. | DIMENSIONS | | WALL THICKNESS | WEIGHT lbs/100 ft (g)/100 ft |
|------------|------------------|------------------|--------------------------------|------------------------------------|
| | A | B | | |
| CLTS25F * | 0.398 (10.10) | 0.284 (7.20) | 0.007 - 0.020 (0.18 - 0.51) | 0.75 (340.0) |
| CLTS35F * | 0.504 (12.79) | 0.350 (8.88) | 0.006 - 0.025 (0.15 - 0.64) | 1.12 (510.0) |
| CLTS38F * | 0.524 (13.30) | 0.394 (9.99) | 0.007 - 0.025 (0.18 - 0.64) | 1.38 (625.0) |
| CLTS50F * | 0.654 (16.60) | 0.512 (12.99) | 0.007 - 0.020 (0.18 - 0.51) | 1.85 (840.0) |
| CLTS62F * | 0.847 (21.05) | 0.664 (16.85) | 0.007 - 0.020 (0.18 - 0.51) | 2.29 (1040.0) |
| CLTS75F * | 0.941 (23.90) | 0.767 (19.47) | 0.007 - 0.020 (0.18 - 0.51) | 2.64 (1200.0) |
| CLTS100F * | 1.103 (28.00) | 0.912 (23.15) | 0.008 - 0.030 (0.20 - 0.76) | 3.52 (1600.0) |
| CLTS125F * | 1.536 (39.00) | 1.278 (32.45) | 0.008 - 0.030 (0.20 - 0.76) | 5.77 (2620.0) |
| CLTS150F * | 1.851 (47.00) | 1.575 (39.99) | 0.010 - 0.032 (0.25 - 0.81) | 6.16 (2800.0) |



DIMENSIONS IN PARENTHESES ARE IN METRIC UNITS

NOTES:

* 1. SEE www.panduit.com FOR PART NUMBER SUFFIX DESIGNATION FOR PACKAGE SIZE, PART MATERIAL AND PART COLOR.

2. FOR ROLL SIZES LARGER THAN 10 FEET, SPLICES MAY OCCUR.

| | | | |
|---|--|------------------------------------|--|
| TITLE CLTS()N, CLTS()F - (NON-SLIT) CORRUGATED TUBING | | CUSTOMER DRAWING | |
| ITEM REVISION NAME G03597B0/01 | | PANDUIT | |
| DATASET FILE NAME G03597B0/01 - GB0222BD_REV08 | | | |
| UNLESS OTHERWISE SPECIFIED, DIMENSIONAL TOLERANCES ARE: IN (mm) | | MATERIAL: SEE ABOVE | |
| .X ± .XX ± | | .XXX ± .050 ANGLES ± | |
| DRAWN BY CMR | | DRAWING NUMBER: GB0222BD | |
| DATE 7-5-95 | | THIRD ANGLE PROJECTION | |
| CHK VJS | | SCALE NONE | |
| APR DESCRIPTION | | SHT 1 OF 1 | |
| ECN | | SIZE A | |

| REV | DATE | BY | CHK | APR | DESCRIPTION | ECN |
|-----|---------|-----|-----|------|--|-------------|
| -- | --- | --- | --- | --- | ADDED WALL THICKNESS TO TABLE. ADDED * TO PART NUMBERS AND REVISED NOTE 1. | --- |
| 08 | 5/21/14 | BWG | VJS | JADE | REVISED DIMENSIONS. UPDATED TITLE BORDER AND REMOVED PREVIOUS REVISION BALLONS FOR CLAIRITY. | GB0222BD/08 |