



Chipsmall Limited consists of a professional team with an average of over 10 year of expertise in the distribution of electronic components. Based in Hongkong, we have already established firm and mutual-benefit business relationships with customers from,Europe,America and south Asia,supplying obsolete and hard-to-find components to meet their specific needs.

With the principle of “Quality Parts,Customers Priority,Honest Operation,and Considerate Service”,our business mainly focus on the distribution of electronic components. Line cards we deal with include Microchip,ALPS,ROHM,Xilinx,Pulse,ON,Everlight and Freescale. Main products comprise IC,Modules,Potentiometer,IC Socket,Relay,Connector.Our parts cover such applications as commercial,industrial, and automotives areas.

We are looking forward to setting up business relationship with you and hope to provide you with the best service and solution. Let us make a better world for our industry!



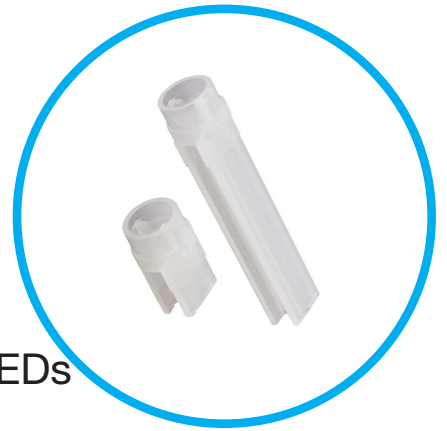
Contact us

Tel: +86-755-8981 8866 Fax: +86-755-8427 6832

Email & Skype: info@chipsmall.com Web: www.chipsmall.com

Address: A1208, Overseas Decoration Building, #122 Zhenhua RD., Futian, Shenzhen, China





SpaceSetter™ LED Spacer

SpaceSetter™ is a unique LED Spacer to position LEDs T1 (3 mm) and T1¾ (5 mm)

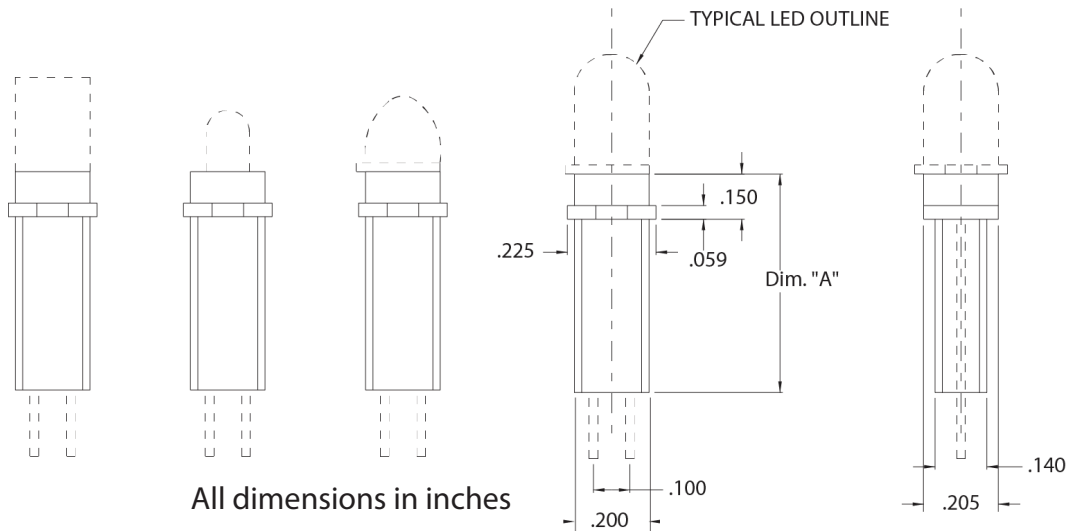
Applications

- consumer electronics
- electrical panels
- instrument panels
- PCBs in general

Key features

- designed to fit standards T1 (3 mm) and T1¾ (5 mm)
- height requirement: .200" to 1.000"
- can be customized for other height requirements
- space the LED from the surface of the board
- minimize shifting and height variation
- ensure product uniformity and production ease
- material composition is Nylon Zytel
- color: natural

Dimensions



Product specifications

Material	Installation Specification
Nylon Zytel	height requirement: .200" to 1.000" ± 0.020"

Ordering data

CM00624200	0.200"
CM00624250	0.250"
CM00624300	0.300"
CM00624375	0.375"

CM00624400	0.400"
CM00624450	0.450"
CM00624455	0.455"
CM00624500	0.500"

CM00624595	0.595"
CM00624606	0.606"
CM00624624	0.624"
CM00624625	0.625"

CM00624750	0.750"
CM00624850	0.850"
CM00624900	0.900"
CM00624001	1.000"