



Chipsmall Limited consists of a professional team with an average of over 10 year of expertise in the distribution of electronic components. Based in Hongkong, we have already established firm and mutual-benefit business relationships with customers from,Europe,America and south Asia,supplying obsolete and hard-to-find components to meet their specific needs.

With the principle of “Quality Parts,Customers Priority,Honest Operation,and Considerate Service”,our business mainly focus on the distribution of electronic components. Line cards we deal with include Microchip,ALPS,ROHM,Xilinx,Pulse,ON,Everlight and Freescale. Main products comprise IC,Modules,Potentiometer,IC Socket,Relay,Connector.Our parts cover such applications as commercial,industrial, and automotives areas.

We are looking forward to setting up business relationship with you and hope to provide you with the best service and solution. Let us make a better world for our industry!



Contact us

Tel: +86-755-8981 8866 Fax: +86-755-8427 6832

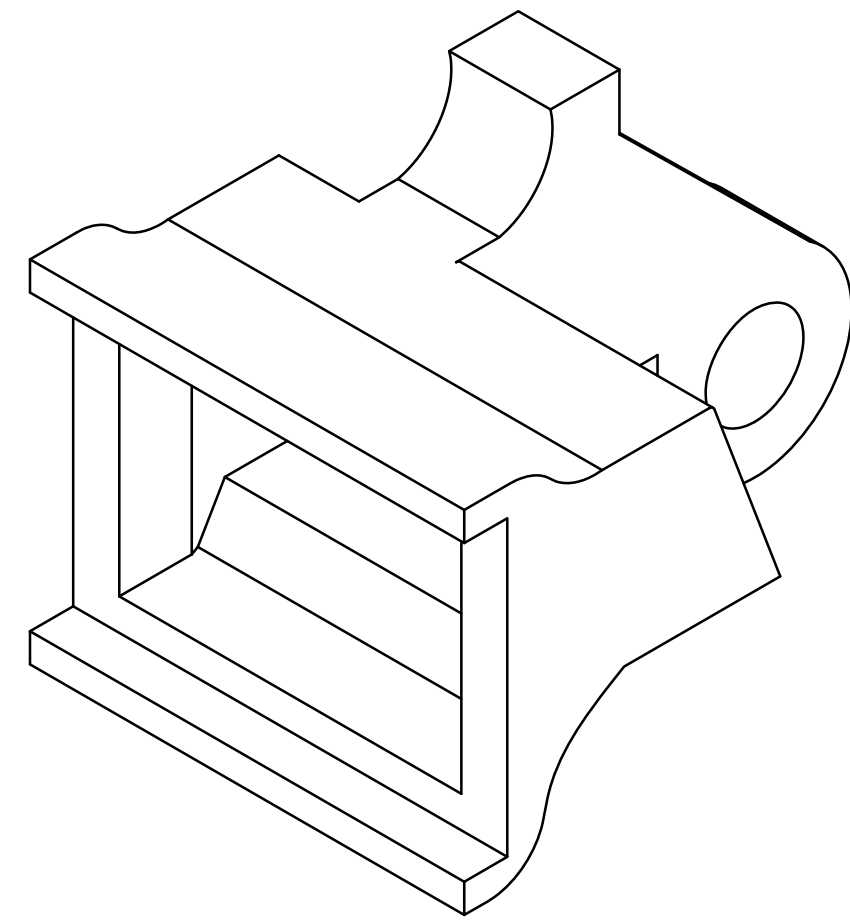
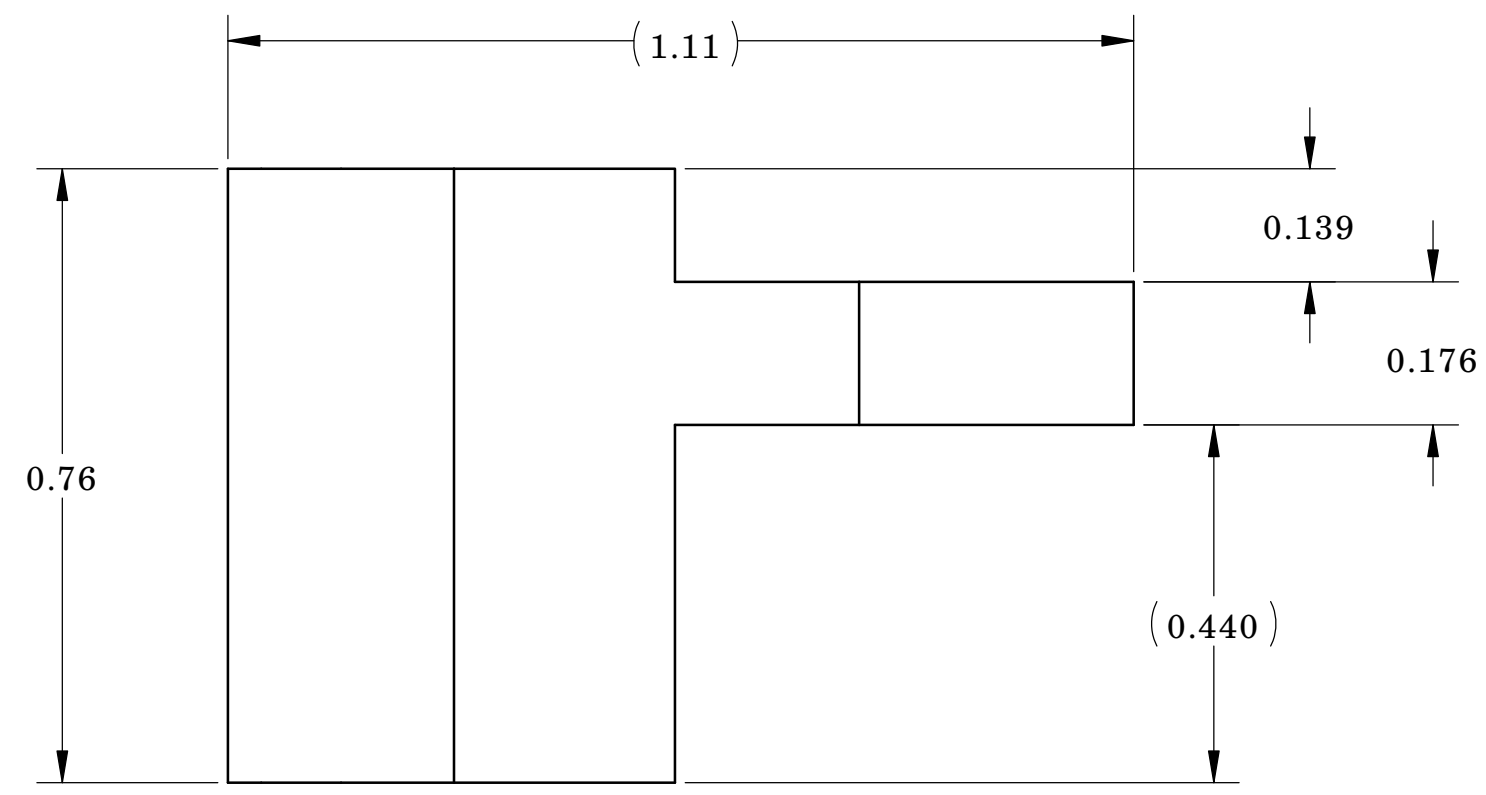
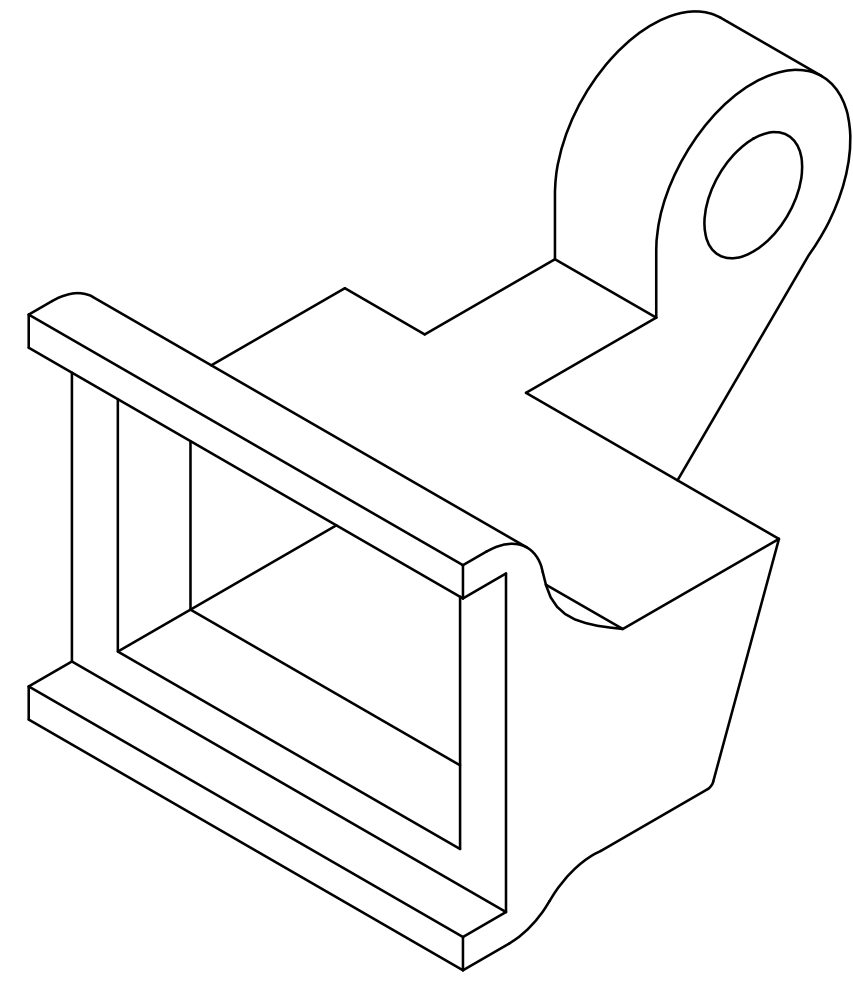
Email & Skype: info@chipsmall.com Web: www.chipsmall.com

Address: A1208, Overseas Decoration Building, #122 Zhenhua RD., Futian, Shenzhen, China

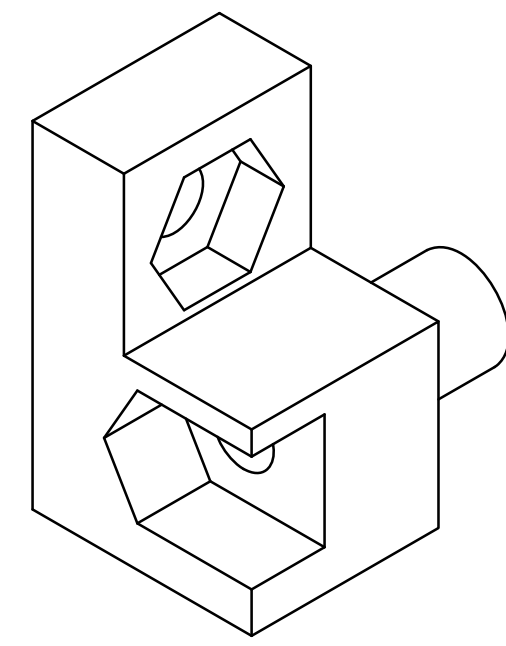


PROPRIETARY AND CONFIDENTIAL
 THE INFORMATION CONTAINED IN THIS DRAWING IS THE SOLE PROPERTY OF VECTOR ELECTRONICS & TECHNOLOGY, INC. ANY REPRODUCTION IN PART OR AS A WHOLE WITHOUT THE WRITTEN PERMISSIONS OF VECTOR ELECTRONICS & TECHNOLOGY, INC. IS PROHIBITED.

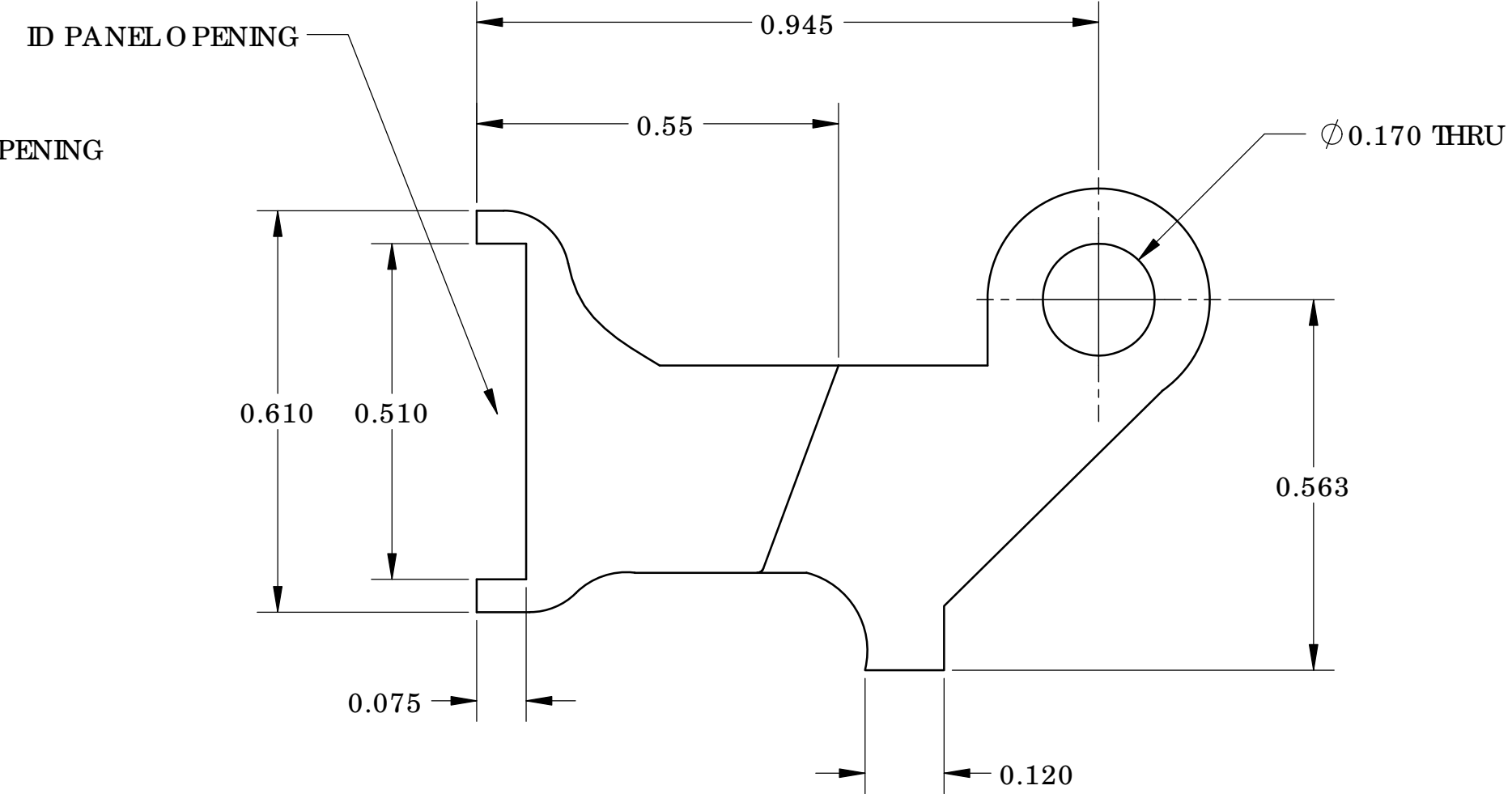
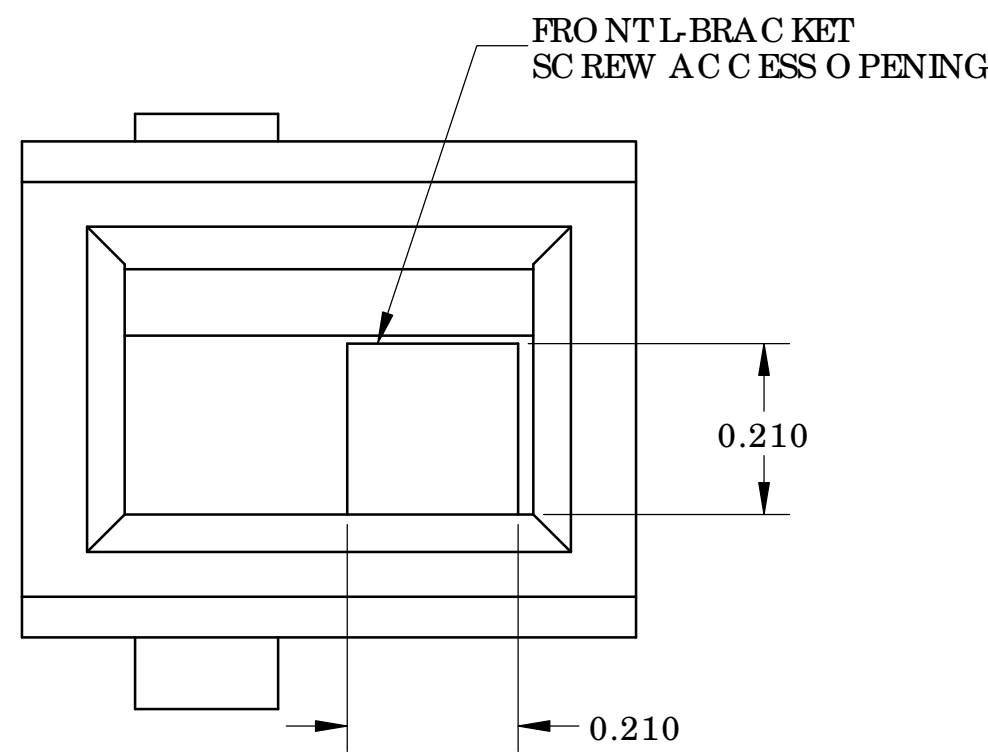
| REVISIONS | | | | |
|-----------|-----|-----------------|----------|----------|
| ZONE | REV | DESCRIPTION | DATE | APPROVED |
| ALL | A | INITIAL RELEASE | 08/31/12 | |



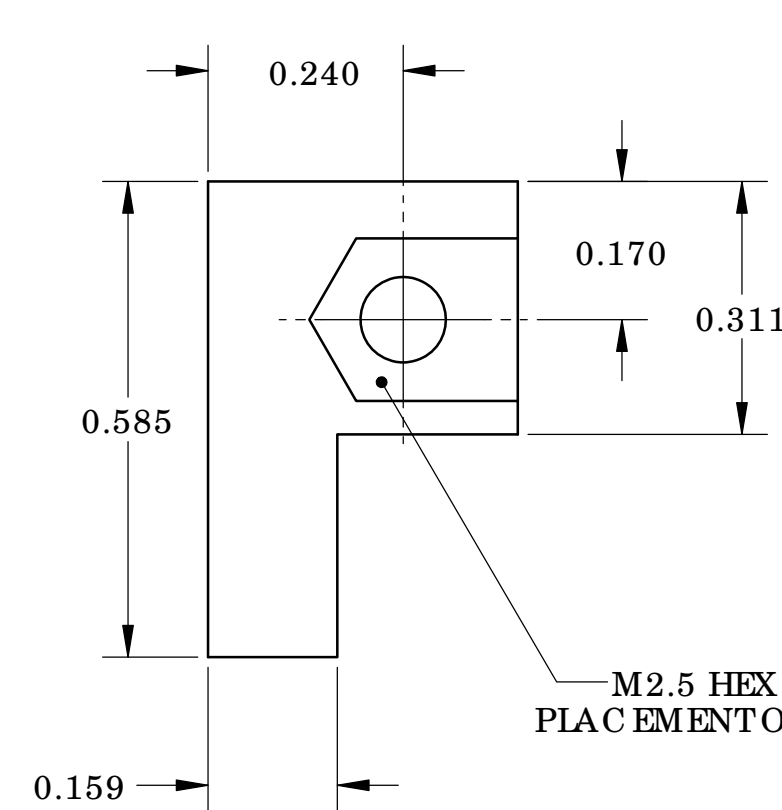
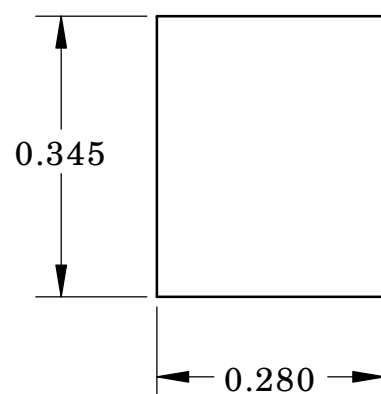
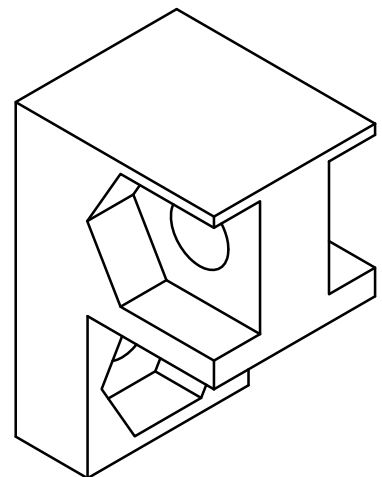
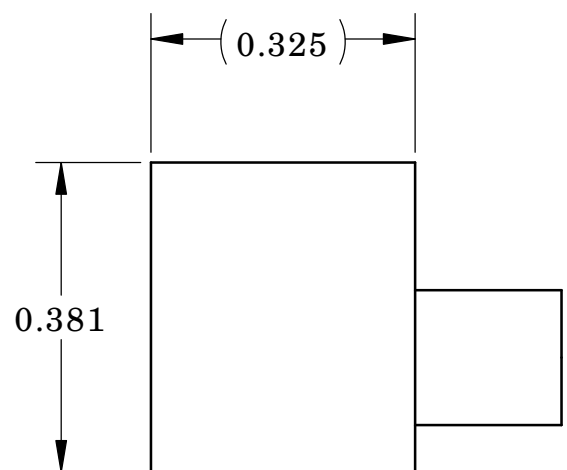
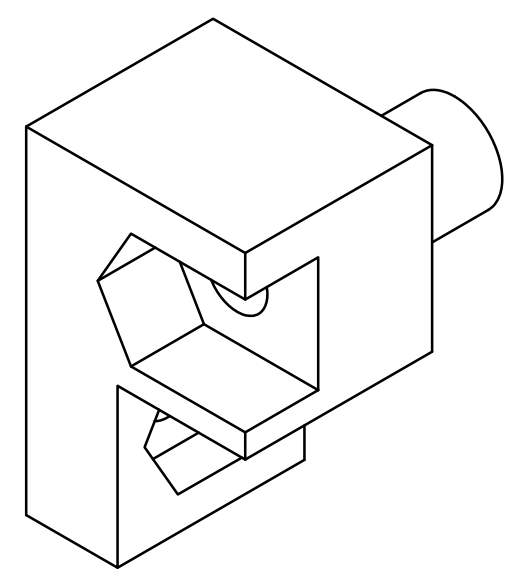
TO P EJECTOR HANDLE DETAIL
 MIRROR VIEW OF BOTTOM HANDLE



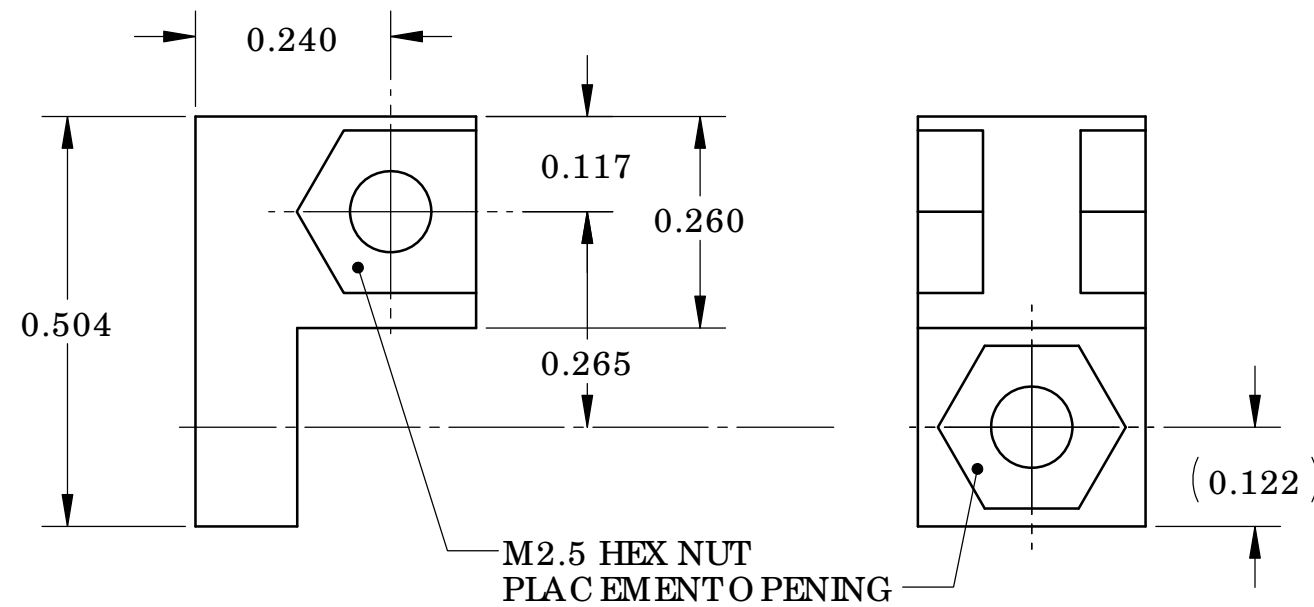
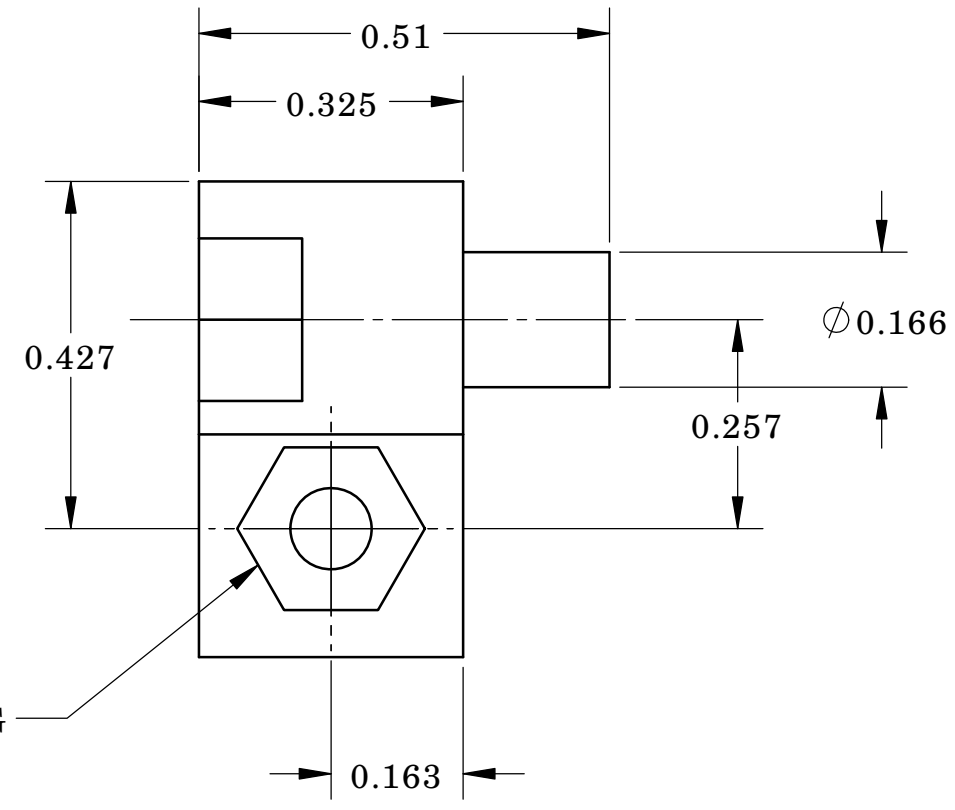
TO P SUPPORT BRACKET DETAIL
 MIRROR VIEW OF BOTTOM BRACKET



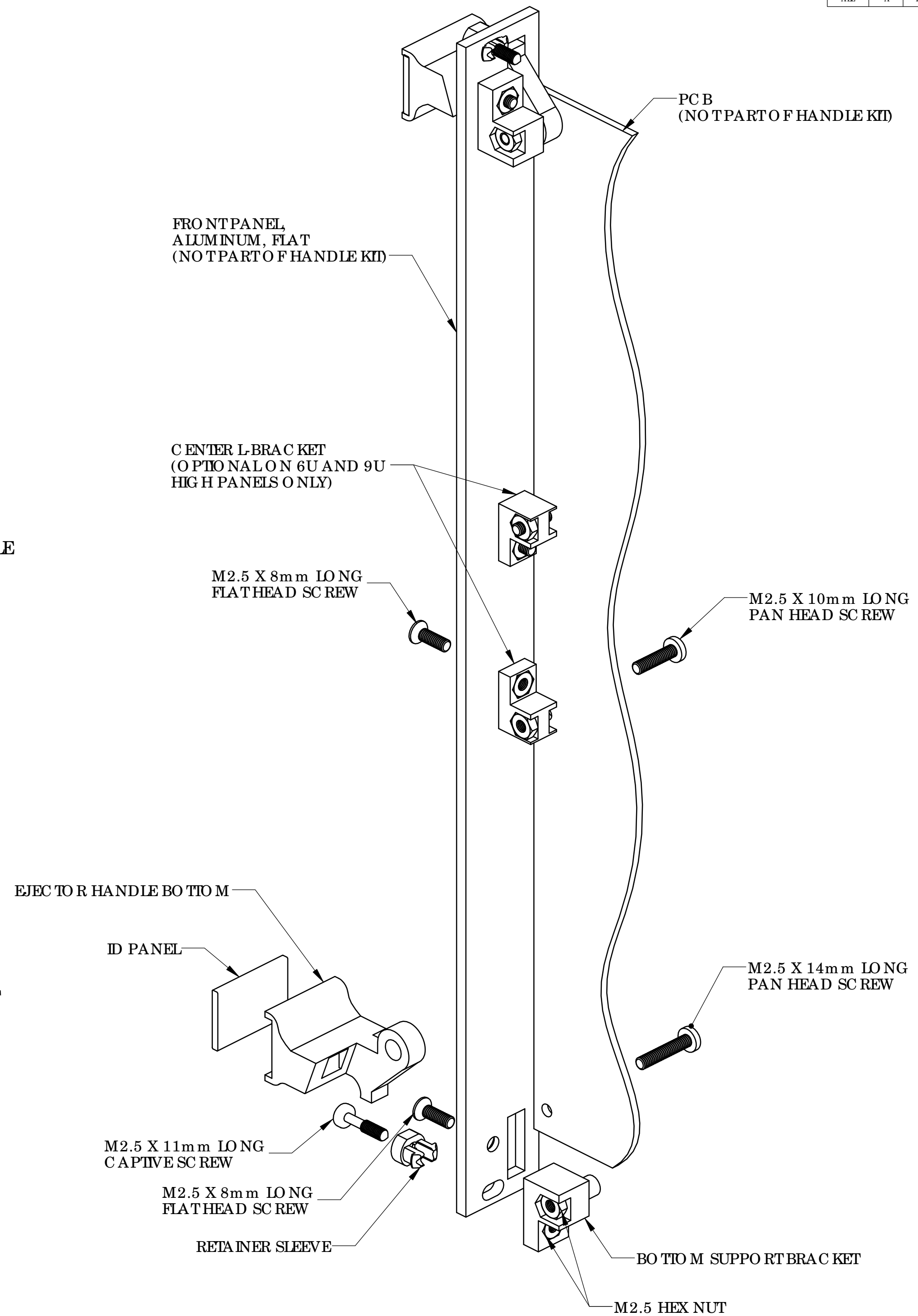
BOTTOM EJECTOR HANDLE DETAIL



BOTTOM SUPPORT BRACKET DETAIL

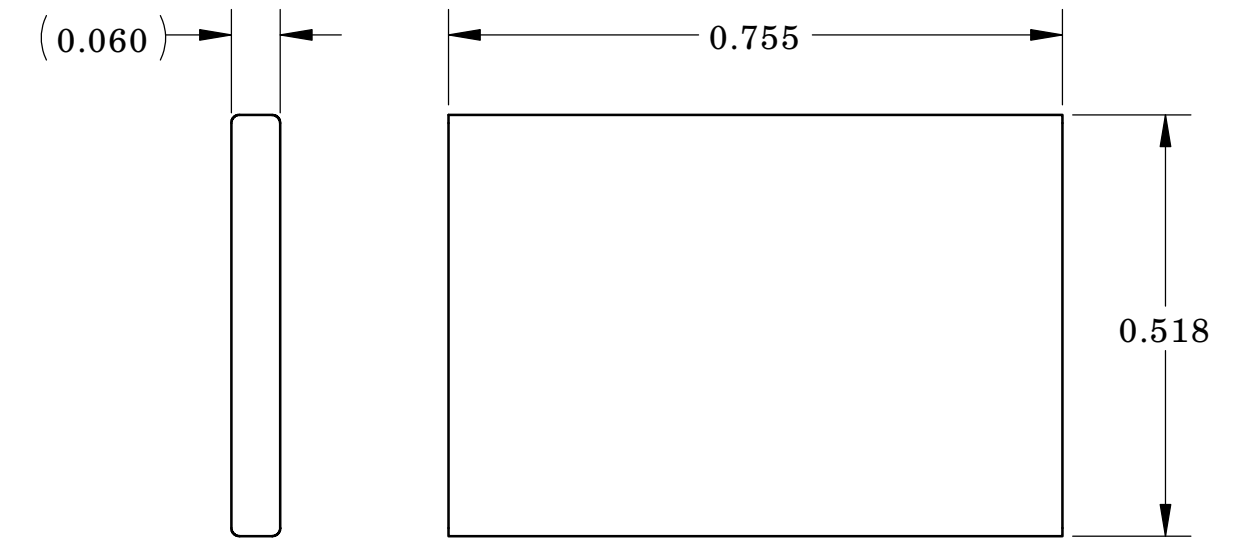


CENTER L-BRACKET DETAIL



CM10 PARTS LIST

| ITEM NO | DESCRIPTION | QTY | U/M |
|---------|---------------------------------|-----|------|
| 1 | EJECTOR HANDLE, BO T T O M | 1 | EACH |
| 2 | EJECTOR HANDLE, TO P | 1 | EACH |
| 3 | SUPPORT BRACKET, BO T T O M | 1 | EACH |
| 4 | SUPPORT BRACKET, TO P | 1 | EACH |
| 5 | ID PANEL | 2 | EACH |
| 6 | CENTER L-BRACKET | 2 | EACH |
| 7 | RETAINER SLEEVE | 2 | EACH |
| 8 | CAPTIVE SCREW, M2.5-0.45X11mm | 2 | EACH |
| 9 | SCREW, FLAT HEAD, M2.5-0.45X8mm | 4 | EACH |
| 10 | SCREW, PAN HEAD, M2.5-0.45X14mm | 2 | EACH |
| 11 | SCREW, PAN HEAD, M2.5-0.45X10mm | 2 | EACH |
| 12 | HEX NUT, M2.5X0.45-6H | 8 | EACH |



ID PANEL DETAIL

| | | | | |
|-------------------------------------------------------------------------------------------|-------|----------|--------------------------------------------------------------------|--------------------------------------------------|
| UNLESS OTHERWISE SPECIFIED: DIMENSIONS ARE IN INCHES TOLERANCES | NAME | DATE | VECTOR ELECTRONICS & TECHNOLOGY, INC. www.vectorlect.com | TITLE VAN CHEN ST NORTH HOLLYWOOD CA 91655 |
| DRW: XX ±0.1 DES: XXX ±0.03 ENG APPR: ±0.010 FRAC T I O N S 20:100 ANGLES ±1° | DRAWN | REVISION | | 08/31/12 |
| MATERIAL | Q.A. | COMMENTS | EJECTOR HANDLE TYPE II, 1101.1 | |
| FINISH | | | | |

SIZE DWG. NO. REV
D CM10 A
 SCALE 4:1 CAGE CODE: 82893 SHEET 1 OF 1