



Chipsmall Limited consists of a professional team with an average of over 10 year of expertise in the distribution of electronic components. Based in Hongkong, we have already established firm and mutual-benefit business relationships with customers from,Europe,America and south Asia,supplying obsolete and hard-to-find components to meet their specific needs.

With the principle of “Quality Parts,Customers Priority,Honest Operation,and Considerate Service”,our business mainly focus on the distribution of electronic components. Line cards we deal with include Microchip,ALPS,ROHM,Xilinx,Pulse,ON,Everlight and Freescale. Main products comprise IC,Modules,Potentiometer,IC Socket,Relay,Connector.Our parts cover such applications as commercial,industrial, and automotives areas.

We are looking forward to setting up business relationship with you and hope to provide you with the best service and solution. Let us make a better world for our industry!



Contact us

Tel: +86-755-8981 8866 Fax: +86-755-8427 6832

Email & Skype: info@chipsmall.com Web: www.chipsmall.com

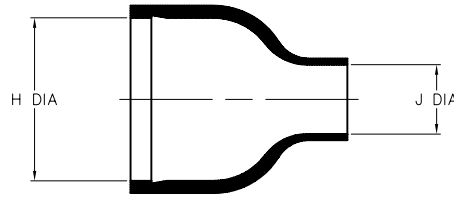
Address: A1208, Overseas Decoration Building, #122 Zhenhua RD., Futian, Shenzhen, China



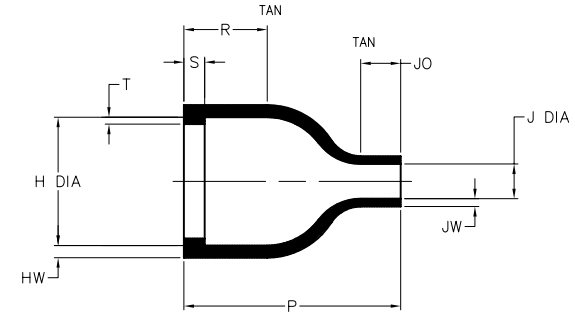
NOTES

1. ALL DIMENSIONS ARE IN $\frac{\text{INCHES}}{[\text{MILLIMETERS}]}$
2. DIMENSIONS APPEARING IN TABLE ARE AS FOLLOWS:
 - a - AS SUPPLIED
 - b - AFTER UNRESTRICTED RECOVERY
3. COATING (ADHESIVE) IS OPTIONAL. AS SUPPLIED DIMENSIONS APPEARING IN TABLE ARE FOR UNCOATED PARTS. WHEN COATING IS ADDED, ENTRY DIAMETERS WILL BE REDUCED BY .06 MAX.

REVISIONS		
LTR	DESCRIPTION	DATE
B	ECD-08-007623	03/26/2008



AS SUPPLIED



AFTER UNRESTRICTED RECOVERY

PART NUMBER	H		J		P ±10%	R ±10%	S ±10%	T ±10%	HW ±20%	JW ±20%	JO ±10%
	MIN	MAX	MIN	MAX							
	a	b	a	b	b	b	b	b	b	b	
202E532	$\frac{1.16}{[29,5]}$	$\frac{.74}{[18,8]}$	$\frac{.55}{[14,0]}$	$\frac{.20}{[5,1]}$	$\frac{1.25}{[31,7]}$	$\frac{.48}{[12,2]}$	$\frac{.12}{[3,0]}$	$\frac{.04}{[1,0]}$	$\frac{.07}{[1,8]}$	$\frac{.045}{[1,1]}$	$\frac{.23}{[5,8]}$

If this document is printed it becomes uncontrolled. Check for the latest revision

CUSTOMER DRAWING

COMPATIBILITY CHART

MATERIAL DASH NO.	MATERIAL DESCRIPTION	RT SPEC	COATING NO.	COATING SPEC
-25	ELASTOMER, FLUID RESISTANT	RT-1325	/86	S-1048
			/225	S-1206

UNLESS OTHERWISE SPECIFIED DIMENSIONS ARE INCHES. METRIC DIMENSIONS ARE IN BRACKETS.		DRAWN UNGUYEN	DATE 03/26/2008	<p>Raychem Molded Parts 305 Constitution Dr Menlo Park, CA 94025</p>
DECIMAL TOLERANCES .XXX ± 0.005 [0.13 mm] .XX ± 0.01 [0.25 mm] .X ± 0.1 [0.50 mm]		RPN THIRD ANGLE PROJECTION		
ANGLE TOLERANCE .X ± 1 DEG.		© 2007-2008 Tyco Electronics Corporation. All rights reserved.		SIZE B CODE IDENT. NO. 06090 DWG. NO. 202E532
DO NOT SCALE THIS DRAWING			SHEET 1 OF 1	