



Chipsmall Limited consists of a professional team with an average of over 10 year of expertise in the distribution of electronic components. Based in Hongkong, we have already established firm and mutual-benefit business relationships with customers from,Europe,America and south Asia,supplying obsolete and hard-to-find components to meet their specific needs.

With the principle of “Quality Parts,Customers Priority,Honest Operation,and Considerate Service”,our business mainly focus on the distribution of electronic components. Line cards we deal with include Microchip,ALPS,ROHM,Xilinx,Pulse,ON,Everlight and Freescale. Main products comprise IC,Modules,Potentiometer,IC Socket,Relay,Connector.Our parts cover such applications as commercial,industrial, and automotives areas.

We are looking forward to setting up business relationship with you and hope to provide you with the best service and solution. Let us make a better world for our industry!



Contact us

Tel: +86-755-8981 8866 Fax: +86-755-8427 6832

Email & Skype: info@chipsmall.com Web: www.chipsmall.com

Address: A1208, Overseas Decoration Building, #122 Zhenhua RD., Futian, Shenzhen, China



CM8663Z161B-10

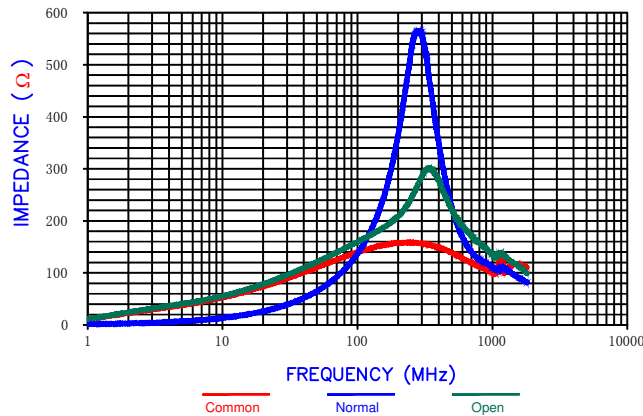
PHYSICAL DIMENSIONS:

A	22.00 [.866]	+ 0.40 [.016]
B	16.00 [.630]	+ 0.30 [.012]
C	16.50 [.650]	+ 0.25 [.010]
D	8.10 [.319]	+ 0.25 [.010]
E	10.20 [.402]	+ 0.50 [.020]

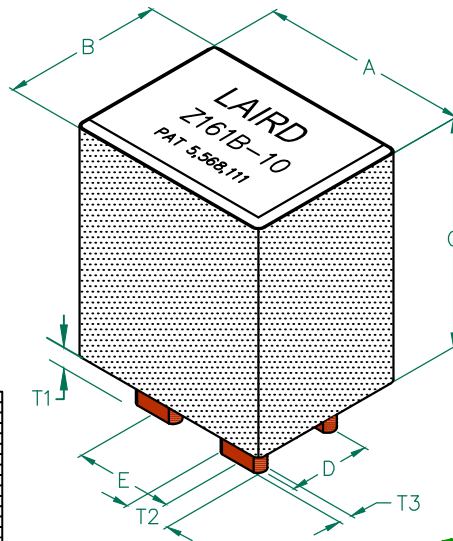
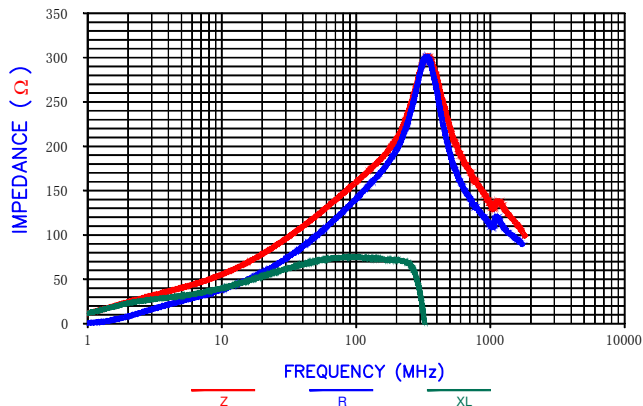
WIRE DIMENSIONS:

T1	3.05 [.120.]	+ 0.33 [.013]
T2	5.50 [.217]	+ 0.05 [.002]
T3	1.40 [.055]	+ 0.05 [.002]

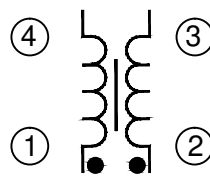
Z vs. FREQUENCY (C,N,O)



Z, R, XL vs. FREQUENCY



EQUIVALENT CIRCUIT



UNCONTROLLED DOCUMENT

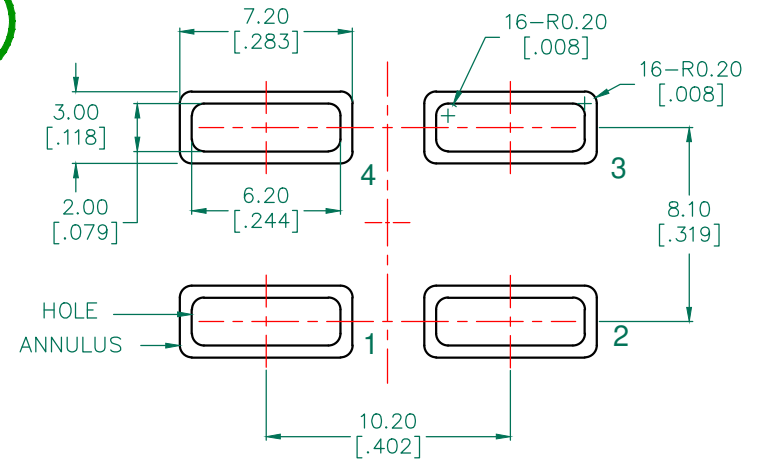
ELECTRICAL CHARACTERISTICS:

Z @ 100MHz (Ω)	DCR (mΩ)	Rated Current (A)
Nominal	160	
Minimum	120	
Maximum	—	0.15
		65A _{dc} or 82A _{ac}

NOTES: UNLESS OTHERWISE SPECIFIED

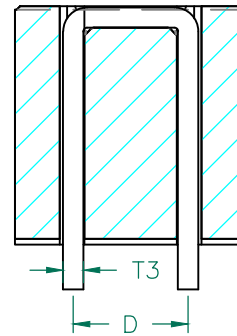
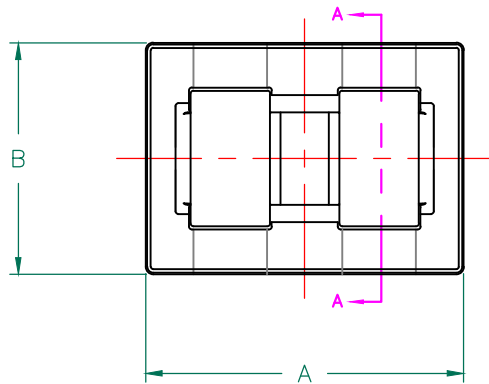
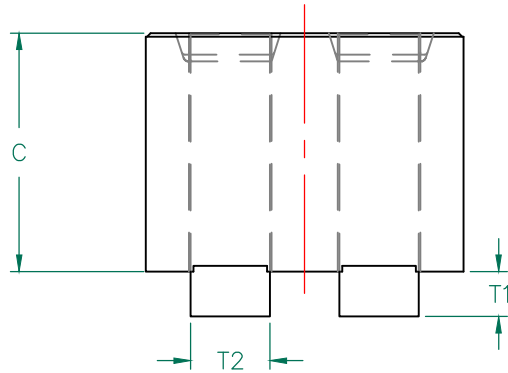
- RATING CURRENT IS DC CURRENT THAT CAUSES THE TEMPERATURE RISE ($\Delta T \leq 55^\circ\text{C}$) FROM 25°C AMBIENT.
- COMPONENTS SHOULD BE ADEQUATELY PRE-HEATED BEFORE SOLDERING.
- TERMINATION FINISH IS 100% TIN.
- OPERATING TEMPERATURE RANGE: -40°C TO $+155^\circ\text{C}$ (INCLUDING SELF-HEATING).

HOLE PATTERN FOR WAVE SOLDERING

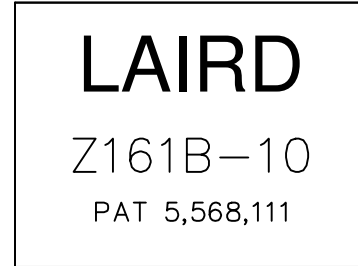


DIMENSIONS ARE mm IN [INCHES]				This print is the property of Laird Tech. and is loaned in confidence subject to return upon request and with the understanding that no copies shall be made without the written consent of Laird Tech. All rights to design or invention are reserved.			
PROJECT/PART NUMBER:				REV			
CM8663Z161B-10				A			
DATE: 10/14/15				SCALE: NTS			
DRAWN BY: QIU				MATERIAL:			
1 OF 2				TOOL # H0866-1			
REV	DESCRIPTION	DATE	INT	DATE	INT	TOOL #	DESCRIPTION
A	ORIGINAL DRAFT	10/14/15	QIU	10/14/15	QIU	H0866-1	CM8663Z161B-10-A

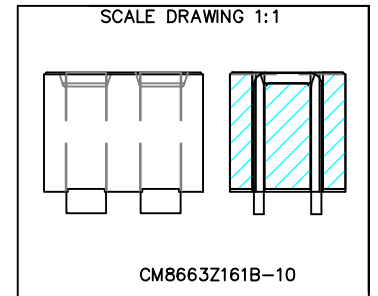




SECTION A-A



LABEL



CM8663Z161B-10

ELECTRICAL TESTING

TEST:	GROSS	GROSS
	Z	Z
FREQUENCY	25 MHz	100 MHz
NOMINAL	90 Ω	160 Ω
MINIMUM	- Ω	120 Ω
WEIGHT/1000	30.5 kgs.	67.2 lbs.



UNCONTROLLED DOCUMENT

PHYSICAL DIMENSIONS:

A	22.00 [.866]	+ 0.40 [.016]
B	16.00 [.630]	+ 0.30 [.012]
C	16.50 [.650]	+ 0.25 [.010]
D	8.10 [.319]	+ 0.25 [.010]
E	10.20 [.402]	+ 0.50 [.020]

WIRE DIMENSIONS:

T1	3.05 [.120.]	+ 0.33 [.013]
T2	5.50 [.217]	+ 0.05 [.002]
T3	1.40 [.055]	+ 0.05 [.002]

NOTES: UNLESS OTHERWISE SPECIFIED

1. MAXIMUM CURRENT IS:
65A_{dc} or 82A_{ac} @ 55° C RISE.
2. REFERENCE STEWARD CORE P/N 29H0866-100.
3. REFERENCE STEWARD WIRE PURCHASE SPEC.W0866-11.
4. PROTECTED BY U.S. PATENT NO. 5,568,111.
5. TERMINATION FINISH IS 100% TIN.

DIMENSIONS ARE mm IN [INCHES].				This print is the property of Laird Tech. and is loaned in confidence subject to return upon request and with the understanding that no copies shall be made without the written consent of Laird Tech. All rights to design or invention are reserved.		Laird™	
PROJECT/PART NUMBER:	CM8663Z161B-10			REV	A	DRAWN BY: QIU	
DATE:	10/14/15	SCALE:	NTS	MATERIAL:			
CAD #	CM8663Z161B-10-A	TOOL #	H0866-1	2 OF 2			
A	ORIGINAL DRAFT	10/14/15	QIU				
REV	DESCRIPTION	DATE	INT				