



Chipsmall Limited consists of a professional team with an average of over 10 year of expertise in the distribution of electronic components. Based in Hongkong, we have already established firm and mutual-benefit business relationships with customers from,Europe,America and south Asia,supplying obsolete and hard-to-find components to meet their specific needs.

With the principle of “Quality Parts,Customers Priority,Honest Operation,and Considerate Service”,our business mainly focus on the distribution of electronic components. Line cards we deal with include Microchip,ALPS,ROHM,Xilinx,Pulse,ON,Everlight and Freescale. Main products comprise IC,Modules,Potentiometer,IC Socket,Relay,Connector.Our parts cover such applications as commercial,industrial, and automotives areas.

We are looking forward to setting up business relationship with you and hope to provide you with the best service and solution. Let us make a better world for our industry!



Contact us

Tel: +86-755-8981 8866 Fax: +86-755-8427 6832

Email & Skype: info@chipsmall.com Web: www.chipsmall.com

Address: A1208, Overseas Decoration Building, #122 Zhenhua RD., Futian, Shenzhen, China



CMDZ5221B THRU CMDZ5261B

**SURFACE MOUNT
SILICON ZENER DIODE
2.4 VOLTS THRU 47 VOLTS
250mW, 5% TOLERANCE**

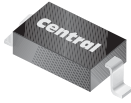


www.centrasemi.com

DESCRIPTION:

The CENTRAL SEMICONDUCTOR CMDZ5221B Series Silicon Zener Diode is a high quality voltage regulator, manufactured in a super-mini surface mount package, designed for use in industrial, commercial, entertainment and computer applications.

SUPERmini™



SOD-323 CASE

MARKING CODE: SEE MARKING CODES ON ELECTRICAL CHARACTERISTICS TABLE

MAXIMUM RATINGS: (T_A=25°C)

Power Dissipation
Operating and Storage Temperature
Thermal Resistance

SYMBOL

P_D
T_J, T_{stg}
Θ_{JA}

UNITS

mW
°C
°C/W

ELECTRICAL CHARACTERISTICS: (T_A=25°C), V_F=0.9V MAX @ I_F=10mA (FOR ALL TYPES)

TYPE	ZENER VOLTAGE V _Z @ I _{ZT}			TEST CURRENT	MAXIMUM ZENER IMPEDANCE			MAXIMUM REVERSE CURRENT		MAXIMUM ZENER VOLTAGE TEMPERATURE COEFFICIENT	MARKING CODE
	MIN	NOM	MAX	I _{ZT}	Z _{ZT} @ I _{ZT}	Z _{ZK} @ I _{ZK}	I _R @ V _R		ΘV _Z		
	V	V	V	mA	Ω	Ω	μA	V	%/°C		
CMDZ5221B	2.280	2.4	2.520	20	30	1200	0.25	100	1.0	-0.085	X1
CMDZ5222B	2.375	2.5	2.625	20	30	1250	0.25	100	1.0	-0.085	X2
CMDZ5223B	2.565	2.7	2.835	20	30	1300	0.25	75	1.0	-0.080	X3
CMDZ5224B	2.660	2.8	2.940	20	30	1400	0.25	75	1.0	-0.080	X4
CMDZ5225B	2.850	3.0	3.150	20	29	1600	0.25	50	1.0	-0.075	X5
CMDZ5226B	3.135	3.3	3.465	20	28	1600	0.25	25	1.0	-0.070	X6
CMDZ5227B	3.420	3.6	3.780	20	24	1700	0.25	15	1.0	-0.065	X7
CMDZ5228B	3.705	3.9	4.095	20	23	1900	0.25	10	1.0	-0.060	X8
CMDZ5229B	4.085	4.3	4.515	20	22	2000	0.25	5.0	1.0	±0.055	X9
CMDZ5230B	4.465	4.7	4.935	20	19	1900	0.25	5.0	2.0	±0.030	XA
CMDZ5231B	4.845	5.1	5.355	20	17	1600	0.25	5.0	2.0	±0.030	XB
CMDZ5232B	5.320	5.6	5.880	20	11	1600	0.25	5.0	3.0	+0.038	XC
CMDZ5233B	5.700	6.0	6.300	20	7.0	1600	0.25	5.0	3.5	+0.038	XD
CMDZ5234B	5.890	6.2	6.510	20	7.0	1000	0.25	5.0	4.0	+0.045	XE
CMDZ5235B	6.460	6.8	7.140	20	5.0	750	0.25	3.0	5.0	+0.050	XF
CMDZ5236B	7.125	7.5	7.875	20	6.0	500	0.25	3.0	6.0	+0.058	XG
CMDZ5237B	7.790	8.2	8.610	20	8.0	500	0.25	3.0	6.5	+0.062	XH
CMDZ5238B	8.265	8.7	9.135	20	8.0	600	0.25	3.0	6.5	+0.065	XJ
CMDZ5239B	8.645	9.1	9.555	20	10	600	0.25	3.0	7.0	+0.068	XK
CMDZ5240B	9.500	10	10.50	20	17	600	0.25	3.0	8.0	+0.075	XL
CMDZ5241B	10.45	11	11.55	20	22	600	0.25	2.0	8.4	+0.076	XN
CMDZ5242B	11.40	12	12.60	20	30	600	0.25	1.0	9.1	+0.077	XO

CMDZ5221B THRU CMDZ5261B

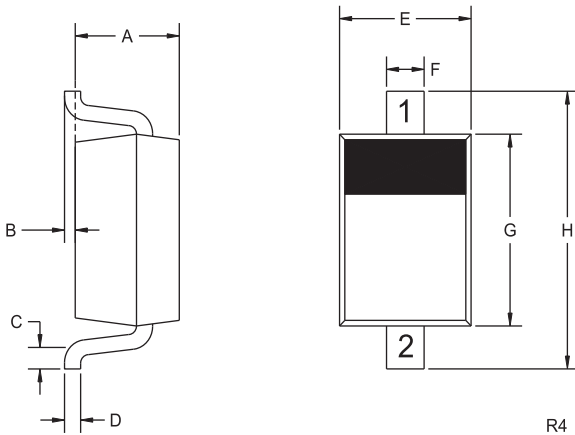
SURFACE MOUNT
SILICON ZENER DIODE
2.4 VOLTS THRU 47 VOLTS
250mW, 5% TOLERANCE



ELECTRICAL CHARACTERISTICS - Continued: ($T_A=25^\circ\text{C}$), $V_F=0.9\text{V MAX @ } I_F=10\text{mA}$ (FOR ALL TYPES)

TYPE	ZENER VOLTAGE $V_Z @ I_{ZT}$			TEST CURRENT	MAXIMUM ZENER IMPEDANCE			MAXIMUM REVERSE CURRENT		MAXIMUM ZENER VOLTAGE TEMPERATURE COEFFICIENT	MARKING CODE
	MIN	NOM	MAX	I_{ZT}	$Z_{ZT} @ I_{ZT}$	$Z_{ZK} @ I_{ZK}$	$I_R @ V_R$	θ_{VZ}			
	V	V	V	mA	Ω	Ω	μA	V	%/°C		
CMDZ5243B	12.35	13	13.65	9.5	13	600	0.25	0.5	9.9	+0.079	XP
CMDZ5244B	13.30	14	14.70	9.0	15	600	0.25	0.1	10	+0.082	XQ
CMDZ5245B	14.25	15	15.75	8.5	16	600	0.25	0.1	11	+0.082	XR
CMDZ5246B	15.20	16	16.80	7.8	17	600	0.25	0.1	12	+0.083	XS
CMDZ5247B	16.15	17	17.85	7.4	19	600	0.25	0.1	13	+0.084	XT
CMDZ5248B	17.10	18	18.90	7.0	21	600	0.25	0.1	14	+0.085	XU
CMDZ5249B	18.05	19	19.95	6.6	23	600	0.25	0.1	14	+0.086	XV
CMDZ5250B	19.00	20	21.00	6.2	25	600	0.25	0.1	15	+0.086	XX
CMDZ5251B	20.90	22	23.10	5.6	29	600	0.25	0.1	17	+0.087	XY
CMDZ5252B	22.80	24	25.20	5.2	33	600	0.25	0.1	18	+0.088	XZ
CMDZ5253B	23.75	25	26.25	5.0	35	600	0.25	0.1	19	+0.089	Y1
CMDZ5254B	25.65	27	28.35	4.6	41	600	0.25	0.1	21	+0.090	Y2
CMDZ5255B	26.60	28	29.40	4.5	44	600	0.25	0.1	21	+0.091	Y3
CMDZ5256B	28.50	30	31.50	4.2	49	600	0.25	0.1	23	+0.091	Y4
CMDZ5257B	31.35	33	34.65	3.8	58	700	0.25	0.1	25	+0.092	Y5
CMDZ5258B	34.20	36	37.80	3.4	70	700	0.25	0.1	27	+0.093	Y6
CMDZ5259B	37.05	39	40.95	3.2	80	800	0.25	0.1	30	+0.094	Y7
CMDZ5260B	40.85	43	45.15	3.0	93	900	0.25	0.1	33	+0.095	Y8
CMDZ5261B	44.65	47	49.35	2.7	105	1000	0.25	0.1	36	+0.095	Y9

SOD-323 CASE - MECHANICAL OUTLINE



SYMBOL	DIMENSIONS			
	INCHES		MILLIMETERS	
	MIN	MAX	MIN	MAX
A	0.031	0.039	0.80	1.00
B	0.000	0.004	0.00	0.10
C	0.008	-	0.20	-
D	0.004	0.007	0.11	0.19
E	0.045	0.053	1.15	1.35
F	-	0.014	-	0.35
G	0.063	0.071	1.60	1.80
H	0.094	0.102	2.40	2.60

SOD-323 (REV: R4)

LEAD CODE:

- 1) CATHODE
- 2) ANODE

R4

R4 (8-January 2010)

OUTSTANDING SUPPORT AND SUPERIOR SERVICES



PRODUCT SUPPORT

Central's operations team provides the highest level of support to insure product is delivered on-time.

- Supply management (Customer portals)
- Inventory bonding
- Consolidated shipping options
- Custom bar coding for shipments
- Custom product packing

DESIGNER SUPPORT/SERVICES

Central's applications engineering team is ready to discuss your design challenges. Just ask.

- Free quick ship samples (2nd day air)
- Online technical data and parametric search
- SPICE models
- Custom electrical curves
- Environmental regulation compliance
- Customer specific screening
- Up-screening capabilities
- Special wafer diffusions
- PbSn plating options
- Package details
- Application notes
- Application and design sample kits
- Custom product and package development

REQUESTING PRODUCT PLATING

1. If requesting Tin/Lead plated devices, add the suffix "TIN/LEAD" to the part number when ordering (example: 2N2222A TIN/LEAD).
2. If requesting Lead (Pb) Free plated devices, add the suffix "PBFREE" to the part number when ordering (example: 2N2222A PBFREE).

CONTACT US

Corporate Headquarters & Customer Support Team

Central Semiconductor Corp.
145 Adams Avenue
Hauppauge, NY 11788 USA
Main Tel: (631) 435-1110
Main Fax: (631) 435-1824
Support Team Fax: (631) 435-3388
www.centrasemi.com

Worldwide Field Representatives:
www.centrasemi.com/wwreps

Worldwide Distributors:
www.centrasemi.com/wwdistributors

For the latest version of Central Semiconductor's **LIMITATIONS AND DAMAGES DISCLAIMER**, which is part of Central's Standard Terms and Conditions of sale, visit: www.centrasemi.com/terms