



Chipsmall Limited consists of a professional team with an average of over 10 year of expertise in the distribution of electronic components. Based in Hongkong, we have already established firm and mutual-benefit business relationships with customers from,Europe,America and south Asia,supplying obsolete and hard-to-find components to meet their specific needs.

With the principle of “Quality Parts,Customers Priority,Honest Operation,and Considerate Service”,our business mainly focus on the distribution of electronic components. Line cards we deal with include Microchip,ALPS,ROHM,Xilinx,Pulse,ON,Everlight and Freescale. Main products comprise IC,Modules,Potentiometer,IC Socket,Relay,Connector.Our parts cover such applications as commercial,industrial, and automotives areas.

We are looking forward to setting up business relationship with you and hope to provide you with the best service and solution. Let us make a better world for our industry!



## Contact us

Tel: +86-755-8981 8866 Fax: +86-755-8427 6832

Email & Skype: info@chipsmall.com Web: www.chipsmall.com

Address: A1208, Overseas Decoration Building, #122 Zhenhua RD., Futian, Shenzhen, China



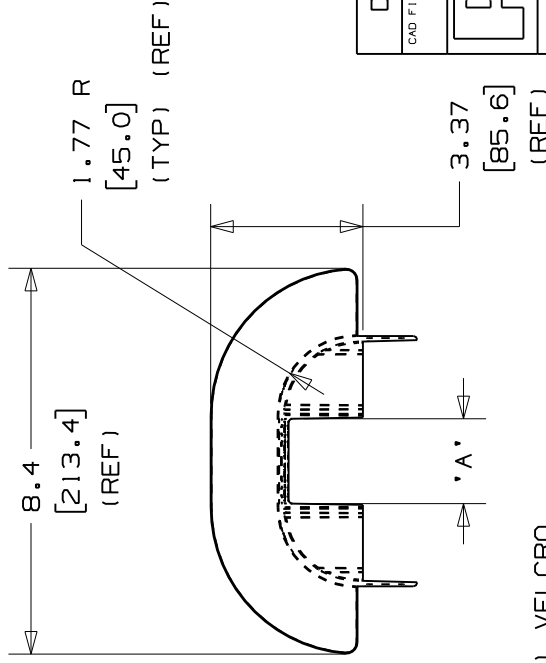
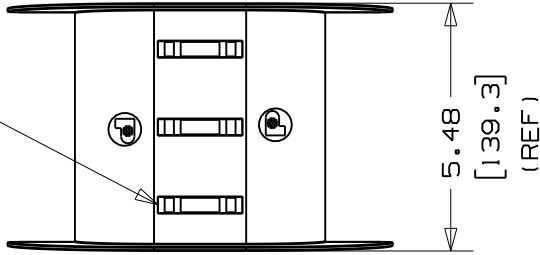
THIS COPY IS PROVIDED ON A RESTRICTED BASIS AND IS NOT TO BE USED IN ANY WAY DETRIMENTAL TO THE INTERESTS OF PANDUIT CORP.

PANDUIT PART NO.  CMW2B	DIMENSIONS	WEIGHT lbs / PC (g) / PC
	'A'	
	1.75 MIN (44.5)	0.59 (267.6)
	LADDER RUNG MAX WIDTH SPEC	
	1.75	

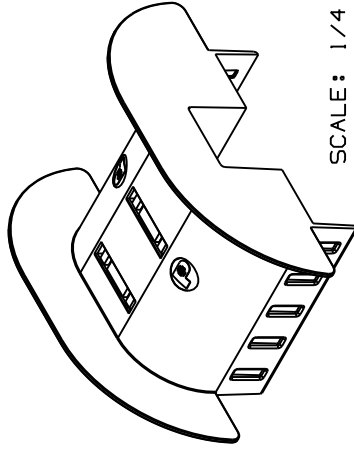
**NOTES:**

1. SEE CURRENT PRICE SHEET FOR PART NUMBER SUFFIX DESIGNATION FOR PACKAGE SIZE AND COLOR.
2. FLAME RETARDANT CABLE TIES
3. (QTY. 3, PLT2S-M60) ARE INCLUDED FOR USE WITH THIS PRODUCT.

CABLE TIE SLOTS  
FOR PLT2S (x6)



3/4" (19.0) VELCRO  
CABLE TIE SLOT (x5)



SCALE: 1/4

DIMENSIONS IN BRACKETS ARE METRIC ( mm )

CAD FILE NAME/LAYERS

G03244CB\_PB\_CMW2B\_00

**PANDUIT**

CORP.

TINLEY PARK, ILLINOIS

CABLE MANAGEMENT WATERFALL  
BASE - DOUBLE (CMW2B)

UNLESS OTHERWISE SPECIFIED,  
DIMENSIONAL TOLERANCES ARE:  
(.X) ±0.05 (1.3) (.XXX) ±0.010 (0.25)  
(.XX) ±0.02 (0.5) ANGLES ±5°

UNLESS OTHERWISE SPECIFIED,  
ALL DIMENSIONS ARE GIVEN  
IN INCHES, THIRD ANGLE  
PROJECTION.

DRAWN BY

JAD

MAT'L:

SCALE

1/4

DATE

6/7/06

DRAWING NO.

GB3244CB

DWG

A

SIZE

CHK'D

ECN

-

R

CUST

SUP

DESCRIPTION

INITIAL RELEASE

GB3244CB

R

DATE

6/7/06

BY

JAD

REV