



Chipsmall Limited consists of a professional team with an average of over 10 year of expertise in the distribution of electronic components. Based in Hongkong, we have already established firm and mutual-benefit business relationships with customers from,Europe,America and south Asia,supplying obsolete and hard-to-find components to meet their specific needs.

With the principle of “Quality Parts,Customers Priority,Honest Operation,and Considerate Service”,our business mainly focus on the distribution of electronic components. Line cards we deal with include Microchip,ALPS,ROHM,Xilinx,Pulse,ON,Everlight and Freescale. Main products comprise IC,Modules,Potentiometer,IC Socket,Relay,Connector.Our parts cover such applications as commercial,industrial, and automotives areas.

We are looking forward to setting up business relationship with you and hope to provide you with the best service and solution. Let us make a better world for our industry!



## Contact us

Tel: +86-755-8981 8866 Fax: +86-755-8427 6832

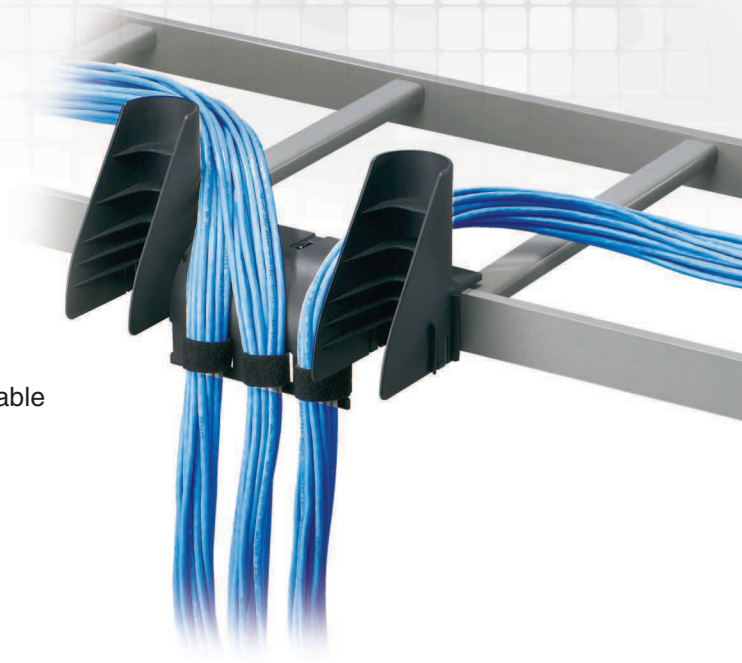
Email & Skype: info@chipsmall.com Web: www.chipsmall.com

Address: A1208, Overseas Decoration Building, #122 Zhenhua RD., Futian, Shenzhen, China



## Waterfall Accessories

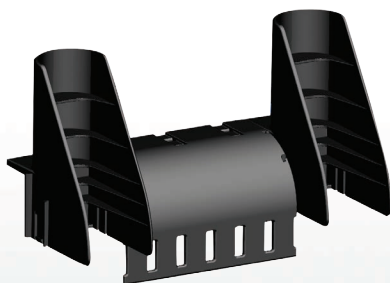
Bend radius control is an important element of cable management that prevents degradation of cable performance to improve network reliability. Panduit waterfall accessories are designed to maintain bend radius control and are available in a variety of mounting configurations to make the product easy to install and maintain. The waterfall accessories are part of the complete range of cable management accessories available from Panduit.



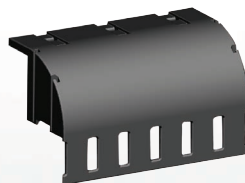
### Key Features

### Benefits

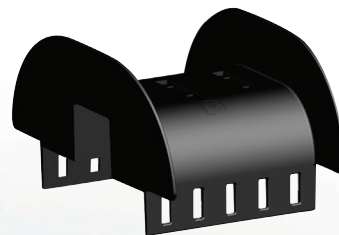
<b>Complete bend radius control</b>	Helps prevent degradation of cable performance Prevents pinch points that could cause damage to cable
<b>Installation cable tie slots</b>	Allows attachment of all manufacturers standard ladder rack
<b>Cable tie slots</b>	Provides placement of 3/4" Tak-Ty® Hook & Loop Cable Ties to retain and manage the cable bundle without over tensioning
<b>UL94V-0</b>	Meets flame retardant specifications
<b>Modular solutions</b>	Allows installation in a variety of configurations and reduces inventory levels



**CMW-KIT**  
Waterfall Kit



**CMWB**  
Waterfall Base



**CMW2B**  
Double Waterfall

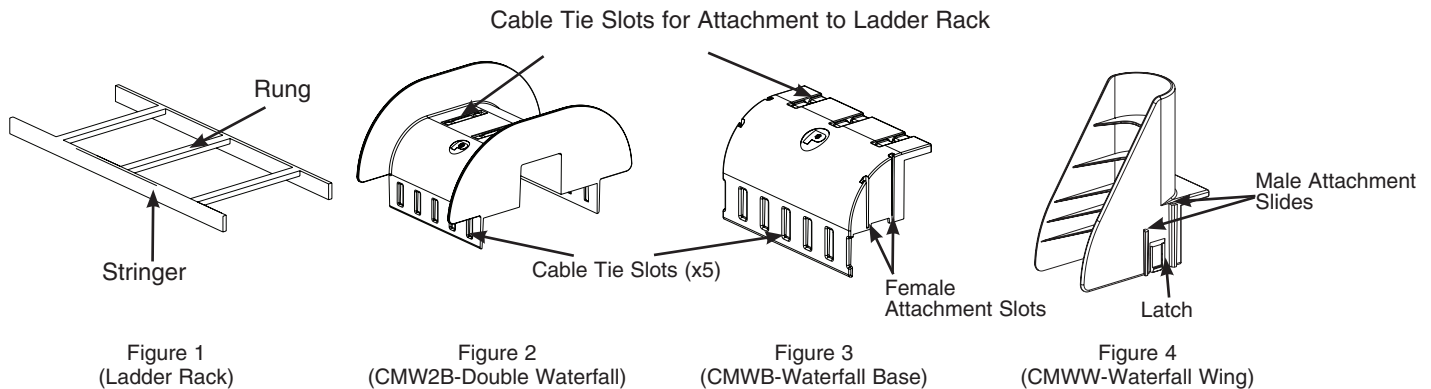


# Waterfall Accessories

## Ordering Information

Part Number	Part Description	Std. Pkg. Qty.	Std. Ctn. Qty.
CMW-KIT	Cable management waterfall kit. Provides bend radius control when transferring cables from standard ladder rack. Kit includes CMWB, two CMWW, and cable ties.	1	10
CMWB	Cable management waterfall base. Used to maintain 1.75" bend radius control vertically when transferring cable off of ladder rack. Mounts to ladder rack rung or stringer with standard cross section cable ties (included).	1	10
CMWW	Cable management waterfall wing. Used in conjunction with CMWB to maintain 1.00" bend radius control horizontally when transferring cable off ladder rack.	1	10
CMW2B	Cable management double waterfall base. Used to maintain 1.75" bend radius control vertically when transferring cable off of ladder rack. Mounts to ladder rack rung with standard cross section cable ties (included).	1	10

## Installation Instructions



- To provide vertical bend radius control for ladder rack rung or stringer (Figure 1), mount waterfall base (Figure 3) to rung or stringer (Figure 1) with three black Panduit PLT series cable ties (included). When mounting the base to the stringer, both cable tie windows are used. When mounting the base to a wide rung, only one of the cable tie windows are used.
- To provide horizontal bend radius when the waterfall base is installed, slide the male attachment slides of the waterfall wing (Figure 4) from above into the female attachment slots on the outside edge of the waterfall base (Figure 3).  
Note: The waterfall wing can be used for bend radius control on either the right or left side of the base.
- To provide vertical bend radius control on both sides of ladder rack rung, mount double waterfall (Figure 2) to ladder rack rung (Figure 1) with three black Panduit PLT series cable ties (included).
- Use the Tak-Ty® Hook & Loop Cable Tie slots found on the lower portion of both the waterfall base (Figure 3) and the double waterfall (Figure 2) to secure cable with maximum 3/4" Tak-Ty® Hook & Loop Cable Ties.

### WORLDWIDE SUBSIDIARIES AND SALES OFFICES

PANDUIT CANADA  
Markham, Ontario  
cs-cdn@panduit.com  
Phone: 800.777.3300

PANDUIT EUROPE LTD.  
London, UK  
cs-emea@panduit.com  
Phone: 44.20.8601.7200

PANDUIT SINGAPORE PTE. LTD.  
Republic of Singapore  
cs-ap@panduit.com  
Phone: 65.6305.7575

PANDUIT JAPAN  
Tokyo, Japan  
cs-japan@panduit.com  
Phone: 81.3.6863.6000

PANDUIT LATIN AMERICA  
Guadalajara, Mexico  
cs-la@panduit.com  
Phone: 52.33.3777.6000

PANDUIT AUSTRALIA PTY. LTD.  
Victoria, Australia  
cs-aus@panduit.com  
Phone: 61.3.9794.9020

For a copy of Panduit product warranties, log on to [www.panduit.com/warranty](http://www.panduit.com/warranty)

For more information

Visit us at [www.panduit.com](http://www.panduit.com)

Contact Customer Service by email: [cs@panduit.com](mailto:cs@panduit.com)  
or by phone: 800.777.3300

**PANDUIT**®

©2017 Panduit Corp.  
ALL RIGHTS RESERVED.  
WACB32--SA-ENG  
1/2017