



Chipsmall Limited consists of a professional team with an average of over 10 year of expertise in the distribution of electronic components. Based in Hongkong, we have already established firm and mutual-benefit business relationships with customers from,Europe,America and south Asia,supplying obsolete and hard-to-find components to meet their specific needs.

With the principle of “Quality Parts,Customers Priority,Honest Operation,and Considerate Service”,our business mainly focus on the distribution of electronic components. Line cards we deal with include Microchip,ALPS,ROHM,Xilinx,Pulse,ON,Everlight and Freescale. Main products comprise IC,Modules,Potentiometer,IC Socket,Relay,Connector.Our parts cover such applications as commercial,industrial, and automotives areas.

We are looking forward to setting up business relationship with you and hope to provide you with the best service and solution. Let us make a better world for our industry!



## Contact us

Tel: +86-755-8981 8866 Fax: +86-755-8427 6832

Email & Skype: info@chipsmall.com Web: www.chipsmall.com

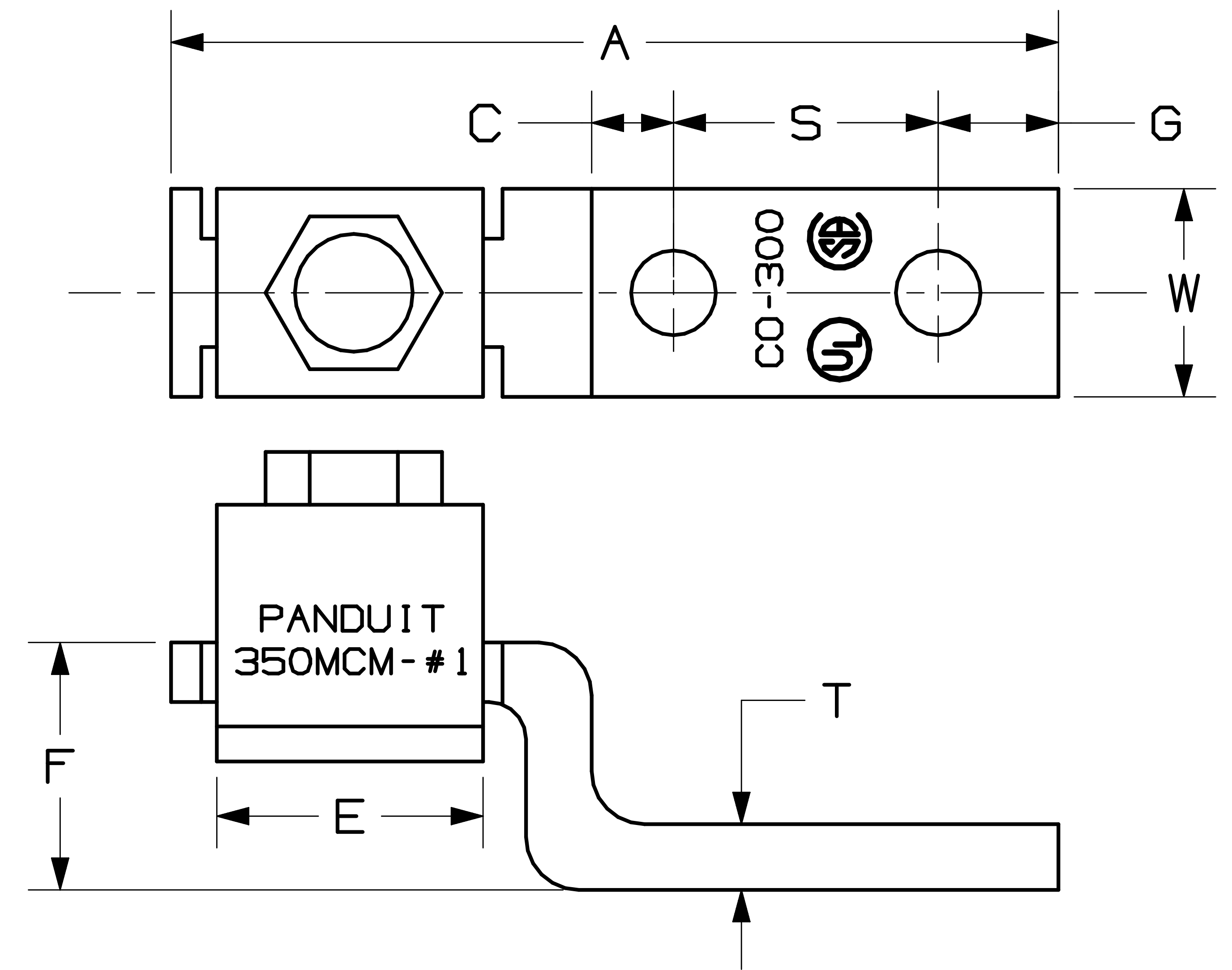
Address: A1208, Overseas Decoration Building, #122 Zhenhua RD., Futian, Shenzhen, China



THIS COPY IS PROVIDED ON A RESTRICTED BASIS AND IS NOT TO BE USED IN ANY WAY DETRIMENTAL TO THE INTERESTS OF PANDUIT CORP.

NOTES:

1. UL AND CSA LOGOS APPEAR ON ALL PARTS AS SHOWN.
2. FOR USE WITH COPPER WIRE ONLY
3. MATERIAL: COPPER
4. IF HEX KEY SIZE IS NOT GIVEN, FLAT HEAD SCREW IS USED.
5. \* NEMA HOLE SIZES AND SPACING.
6. ADDITIONAL MULTIPLE WIRE COMBINATIONS FOR CD35-36-Q ARE:
  - A. TWO-#10'S
  - B. TWO-#12'S
  - C. TWO-#14'S
  - D. ONE-#10 WITH ONE-#12
  - E. ONE-#12 WITH ONE-#14
7. ADDITIONAL MULTIPLE WIRE COMBINATIONS FOR CD70-14-Q ARE:
  - A. ONE-#8 WITH ONE-#4
  - B. ONE-#8 WITH ONE-#6
8. THIS PART IS ROHS COMPLIANT.



PART NUMBER	COPPER CONDUCTOR RANGE	CURRENT RATING (AMPS)	BOLT HOLE SIZE	HEX KEY SIZE	DIMENSIONS IN INCHES								STD. PKG. QTY.	STD. CTN. QTY.
					A	C	E	F	G	S	T	W		
C035-36-QY	#14-#6	50	3/16	---	2.19	.25	.44	.41	.22	1.00	.07	.38	25	100
C070-14-QY	#12-#1	90	1/4	---	2.50	.56	.50	.52	.25	1.00	.09	.50	25	100
C0125-14-QY	#2-#1/0	125	1/4	---	2.97	.41	.63	.64	.44	1.00	.13	.63	25	100
C0225-56-QY	#6-#4/0	225	5/16	5/8	3.62	.75	1.00	.97	.50	1.00	.13	1.00	25	100
C0300-38-3Y	#1-350	300	3/8	3/4	5.69	1.25	1.23	1.38	.81	1.87	.19	1.00	3	12
*C0400-38-3Y	#1/0-500	400	3/8	3/4	6.00	1.06	1.53	1.39	.94	1.75	.19	1.50	3	12
*C0650-12-3Y	600-1000	650	1/2	1-1/8	6.25	.69	1.88	2.00	1.19	1.75	.25	2.00	3	12

CAD FILENAME/LAYERS

C41547\_01

PANDUIT CORP. TINLEY PARK, ILLINOIS

CO SERIES COPPER MECHANICAL LUGS

UNLESS OTHERWISE SPECIFIED, DIMENSIONAL TOLERANCES ARE:  
 (.X) ± (.XXX) ±  
 (.XX) ± ANGLES ±

UNLESS OTHERWISE SPECIFIED, ALL DIMENSIONS ARE GIVEN IN INCHES, THIRD ANGLE PROJECTION.

01	3/06	JHNU	LEM	REVISED ROHS NOTE	PC00334									
00	3/06	JHNU	LEM	DRAWING RELEASED - ROHS COMPLIANT	PC00332									
REV	DATE	BY	CHK	DESCRIPTION	ECN	CUST	PM							

DRAWN BY JHNU  
 DATE 3/06  
 CHK'D

MAT'L: COPPER

SCALE N/A  
 DRAWING NO. C41547  
 DWG SIZE A