



Chipsmall Limited consists of a professional team with an average of over 10 year of expertise in the distribution of electronic components. Based in Hongkong, we have already established firm and mutual-benefit business relationships with customers from,Europe,America and south Asia,supplying obsolete and hard-to-find components to meet their specific needs.

With the principle of "Quality Parts,Customers Priority,Honest Operation,and Considerate Service",our business mainly focus on the distribution of electronic components. Line cards we deal with include Microchip,ALPS,ROHM,Xilinx,Pulse,ON,Everlight and Freescale. Main products comprise IC,Modules,Potentiometer,IC Socket,Relay,Connector.Our parts cover such applications as commercial,industrial, and automotives areas.

We are looking forward to setting up business relationship with you and hope to provide you with the best service and solution. Let us make a better world for our industry!



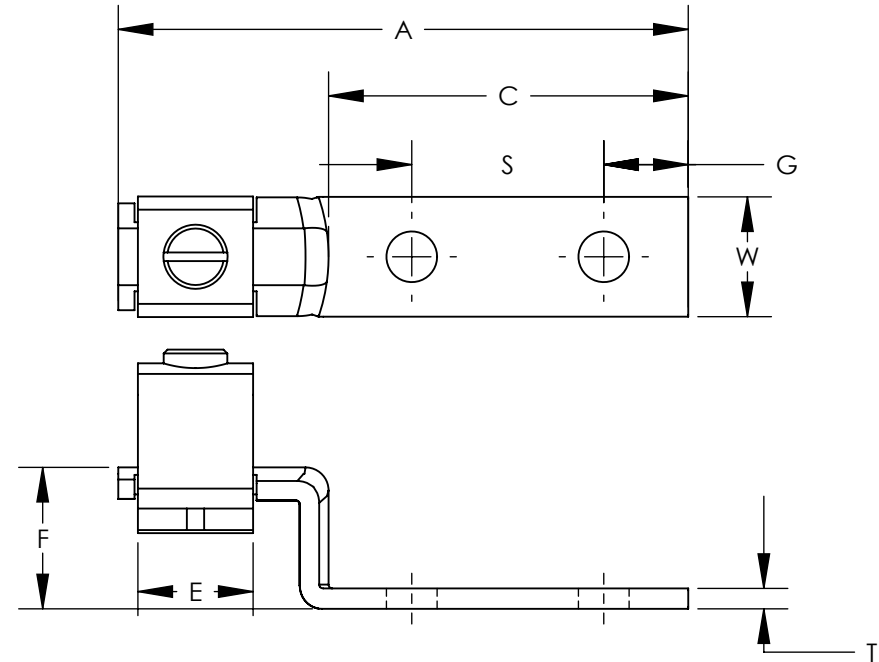
## Contact us

Tel: +86-755-8981 8866 Fax: +86-755-8427 6832

Email & Skype: info@chipsmall.com Web: www.chipsmall.com

Address: A1208, Overseas Decoration Building, #122 Zhenhua RD., Futian, Shenzhen, China





NOTES:

1. MATERIAL:  
BODY - COPPER  
SCREW - STEEL, ZINC PLATED
2. cULus LISTED FOR USE UP TO 600V & TEMPERATURE RATED 90°C
3. RATED FOR USE WITH COPPER STRANDED CODE CONDUCTOR ONLY.
4. THESE PARTS ARE RoHS COMPLIANT.
5. SEE PACKAGING LABEL FOR TIGHTENING TORQUE INFORMATION.
6. PACKAGING QTY:  
Q = 25  
3 = 3



PANDUIT PART NUMBER	WIRE RANGE COPPER	CURRENT RATING (AMPS)	STUD SIZE IN	DIMENSIONS - IN [mm] +/- .02 [.5]								HEX KEY SIZE*
				A	C	E	F	G	S	T	W	
CO35-36SL-QY	#14-#6 (1) #10 & (1) #12 (1) #12 & (1) #14 (2) #10 (2) #12 (2) #14	50	3/16	2.19 [55.6]	1.46 [37.1]	.43 [10.9]	.43 [10.9]	0.22 [5.6]	1.00 [25.4]	0.07 [1.8]	0.38 [9.7]	----
CO70-14SL-QY	#8-#2 (1) #8 & (1) #4 (1) #8 & (1) #6	70**	1/4	2.50 [63.5]	1.60 [40.6]	0.50 [12.7]	.56 [14.3]	0.25 [6.4]	1.00 [25.4]	0.08 [2.1]	0.50 [12.7]	----
CO125-14SL-QY	#2-#1/0	125	1/4	2.97 [75.4]	1.87 [47.5]	.60 [15.2]	0.74 [18.7]	0.44 [11.2]	1.00 [25.4]	0.11 [2.7]	0.62 [15.9]	----
CO225-56HKR-Q	#2-#4/0	225	5/16	3.62 [91.9]	2.28 [57.9]	.94 [23.9]	1.02 [25.8]	0.50 [12.7]	1.00 [25.4]	0.12 [3.1]	0.99 [25.2]	7/32
CO300-38HK-3Y	#1-350	300	3/8	5.69 [144.5]	3.99 [101.3]	1.23 [31.2]	1.29 [32.9]	0.81 [20.6]	1.87 [47.5]	0.12 [3.1]	0.99 [25.2]	5/16
CO400-38HK-3Y	#1/0-500	400	3/8	6.00 [152.4]	3.79 [96.3]	1.41 [35.8]	1.39 [35.3]	0.94 [23.9]	1.75 [44.5]	0.18 [4.5]	1.50 [38.1]	5/16
CO650-12HK-3Y	600-1000	650	1/2	6.25 [158.8]	3.68 [93.5]	1.85 [47.0]	2.00 [50.8]	1.19 [30.2]	1.75 [44.5]	0.25 [6.4]	2.00 [50.8]	3/8

\* HEX STYLE & SIZE MAY DIFFER FROM CHART. DIFFERENCE IN SIZE WILL NOT AFFECT FIT, FORM, OR FUNCTION OF PART  
 \*\* TESTED BY PANDUIT TO UL486A.B REQUIREMENTS FOR AN ASSIGNED RATING OF 100 AMPS.

REV	DATE	BY	CHK	APR	DESCRIPTION	ECN
09	8/16	JHNU	JHNU	RGB	ADDED CO225-56HKR-Q, REMOVED CO225-56HK-QY	N41547BA-C41547
08	10/13	JHNU	JHNU	RGB	ADDED NOTE TO CO70-14SL-QY REGARDING 100 AMP RATING	N41547BA-C41547
07	4/13	JHNU	JHNU	RGB	REVISED WIRE RANGE FOR CO225-56HK-QY: 2-4/0 WAS 6-4/0 REVISED WIRE RANGE FOR CO70-14SL-QY: 8-2 WAS 12-2	N41547BA-C41547
06	2/13	JHNU	JHNU	RGB	REVISED TITLE BLOCK REVISED AMP RATING FOR CO70: 70 WAS 90	N41547BA-C41547

TITLE CO SERIES COPPER MECHANICAL LUGS CUSTOMER DRAWING						
ITEM REVISION NAME		N41547BA-C41547/09				
DATASET FILE NAME		C41547_09.SLDDRW				
UNLESS OTHERWISE SPECIFIED, DIMENSIONAL TOLERANCES ARE: IN [mm]						
.X ±		.XXX ±				
.XX ±		ANGLES ±				
DRAWN BY JHNU			DATE 3/06		CHK JHNU	
SCALE NONE			THIRD ANGLE PROJECTION			
SHEET 1 OF 1						SIZE B



MATERIAL  
SEE NOTES

DRAWING NUMBER  
C41547\_08