



Chipsmall Limited consists of a professional team with an average of over 10 year of expertise in the distribution of electronic components. Based in Hongkong, we have already established firm and mutual-benefit business relationships with customers from,Europe,America and south Asia,supplying obsolete and hard-to-find components to meet their specific needs.

With the principle of “Quality Parts,Customers Priority,Honest Operation,and Considerate Service”,our business mainly focus on the distribution of electronic components. Line cards we deal with include Microchip,ALPS,ROHM,Xilinx,Pulse,ON,Everlight and Freescale. Main products comprise IC,Modules,Potentiometer,IC Socket,Relay,Connector.Our parts cover such applications as commercial,industrial, and automotives areas.

We are looking forward to setting up business relationship with you and hope to provide you with the best service and solution. Let us make a better world for our industry!



## Contact us

Tel: +86-755-8981 8866 Fax: +86-755-8427 6832

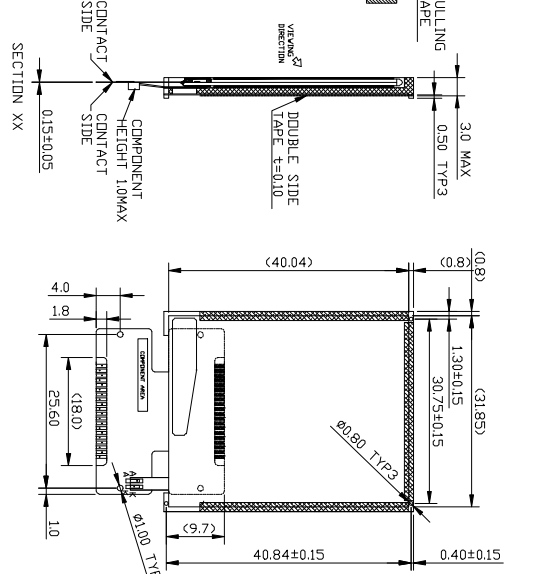
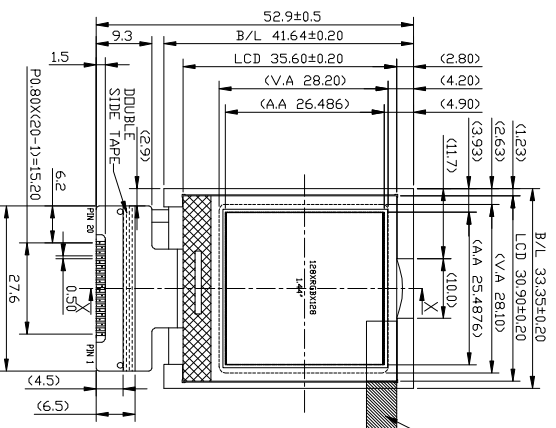
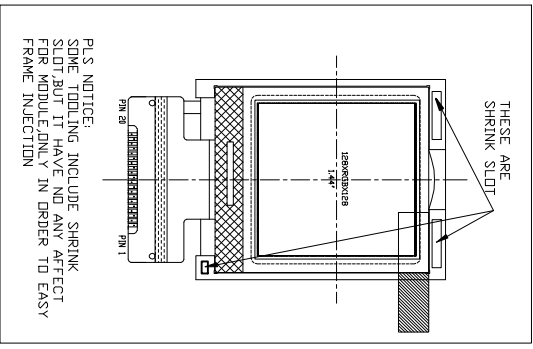
Email & Skype: info@chipsmall.com Web: www.chipsmall.com

Address: A1208, Overseas Decoration Building, #122 Zhenhua RD., Futian, Shenzhen, China



The information contained in this document is proprietary to VARRITRONIX LTD. and shall be protected from any reproduction in part or as a whole without Varritronix's written approval.

| ISSUE | AMENDMENT | DATE |
|-------|-----------|------|
|       |           |      |
|       |           |      |
|       |           |      |
|       |           |      |
|       |           |      |



DETAIL A  
(FOR REFERENCE ONLY)

|     |    |     |
|-----|----|-----|
| RGB | 11 | RGB |
| RGB | 22 | RGB |
| RGB | 33 | RGB |
| RGB | 44 | RGB |
| RGB | 55 | RGB |
| RGB | 66 | RGB |
| RGB | 77 | RGB |
| RGB | 88 | RGB |
| RGB | 99 | RGB |
| RGB | 00 | RGB |

|                                   |                     |
|-----------------------------------|---------------------|
| <b>DISPLAY TYPE</b>               | CS7M4SK             |
| <b>DISPLAY RESOLUTION</b>         | TRANSMISSIVE        |
| <b>VIEWING ANGLE</b>              | 128KRGBx128         |
| <b>MUX RATIO &amp; BIAS</b>       | 6 O CLOCK           |
| <b>LED CONTROLLER/DRIVER</b>      | 1/128 DUTY, UC1697A |
| <b>LOGIC VOLTAGE</b>              | -2.8V               |
| <b>LCD DRIVING VOLTAGE</b>        | TBD                 |
| <b>OPERATING TEMPERATURE</b>      | -20°C TO +70°C      |
| <b>STORAGE TEMPERATURE</b>        | -30°C TO +80°C      |
| <b>TYPE</b>                       | ESD05: 1st L8D      |
| <b>COLOR</b>                      | WHITE               |
| <b>FORWARD VOLTAGE</b>            | TBD                 |
| <b>LUMINANCE (cd/m²)</b>          | TBD                 |
| <b>(ON THE BACKLIGHT SURFACE)</b> | MIN. 2200           |
| <b>MAX.</b>                       | MAX.                |

**TITLE:** SPECIFICATION OF MODULE  
**PROJECT NO.:** CCG-C144MVG1-01  
**CUSTOMER NO.:**

|  |                    |
|--|--------------------|
| <b>TOLERANCE UNLESS OTHERWISE SPECIFIED:</b> | XX ±0.3            |
| <b>DIMENSIONS IN MM</b>                      | XXX ±0.1           |
| <b>MATERIAL:</b>                             | N/A                |
| <b>FINISH:</b>                               | N/A                |
| <b>SCALE:</b>                                | 1:1 (NOT IN SCALE) |
| <b>OVERALL THK:</b>                          | N/A                |

|                               |                    |
|-------------------------------|--------------------|
| <b>THIRD ANGLE PROJECTION</b> |                    |
| <b>DRAWN:</b>                 | NAME: YANG GEN HUA |
| <b>CHECKED:</b>               | NAME: LUO CHENG    |
| <b>DATE:</b>                  | 08.11.05           |
| <b>APPROVED:</b>              | NAME: HENRY HE     |

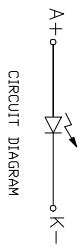
**ITEM NO.:** CCG-C144MVG1-01  
**DESCRIPTION:** CCG-C144MVG1-01  
**FILE NO.:** CCG-C144MVG1-01 REV: 0

**PINS ASSIGNMENT:**

|        |       |     |     |    |    |      |    |     |     |     |     |     |     |     |     |     |     |
|--------|-------|-----|-----|----|----|------|----|-----|-----|-----|-----|-----|-----|-----|-----|-----|-----|
| 1      | 2     | 3   | 4   | 5  | 6  | 7    | 8  | 9   | 10  | 11  | 12  | 13  | 14  | 15  | 16  | 17  | 18  |
| LED AL | LED K | VSS | NC  | NC | CS | RETB | RS | WRD | RDB | DB0 | DB1 | DB2 | DB3 | DB4 | DB5 | DB6 | DB7 |
| 19     | 20    | VSS | VDD |    |    |      |    |     |     |     |     |     |     |     |     |     |     |

**NOTES:**

- ◇ : SPECIAL CHARACTERISTIC
- + : SAFETY CHARACTERISTIC
- ∇ : CRITICAL DIMENSION
- (...) : REFERENCE DIMENSION



**VARRITRONIX LIMITED**

|              |   |           |   |
|--------------|---|-----------|---|
| <b>SHEET</b> | 1 | <b>OF</b> | 1 |
|--------------|---|-----------|---|