



Chipsmall Limited consists of a professional team with an average of over 10 year of expertise in the distribution of electronic components. Based in Hongkong, we have already established firm and mutual-benefit business relationships with customers from,Europe,America and south Asia,supplying obsolete and hard-to-find components to meet their specific needs.

With the principle of “Quality Parts,Customers Priority,Honest Operation,and Considerate Service”,our business mainly focus on the distribution of electronic components. Line cards we deal with include Microchip,ALPS,ROHM,Xilinx,Pulse,ON,Everlight and Freescale. Main products comprise IC,Modules,Potentiometer,IC Socket,Relay,Connector.Our parts cover such applications as commercial,industrial, and automotives areas.

We are looking forward to setting up business relationship with you and hope to provide you with the best service and solution. Let us make a better world for our industry!



Contact us

Tel: +86-755-8981 8866 Fax: +86-755-8427 6832

Email & Skype: info@chipsmall.com Web: www.chipsmall.com

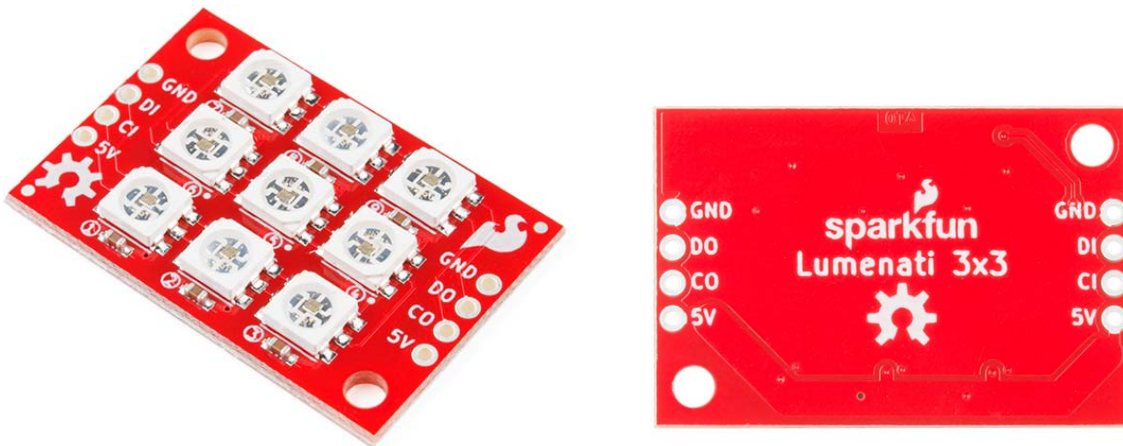
Address: A1208, Overseas Decoration Building, #122 Zhenhua RD., Futian, Shenzhen, China





SparkFun Lumenati 3x3

COM-14360 [Open Source Hardware](#)



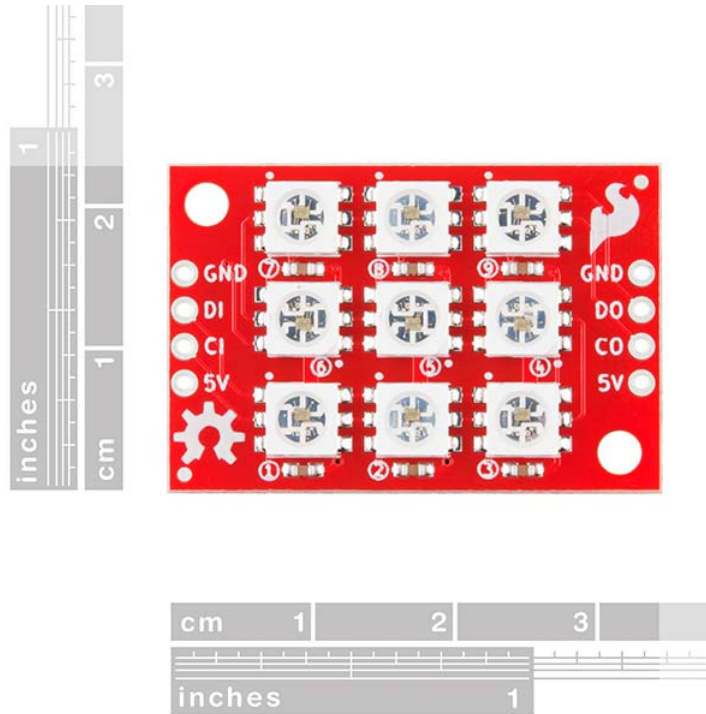
DESCRIPTION

Designed to give your projects an edge in their lighting capacity, the SparkFun Lumenati 3x3 is a small, rectangular board equipped with nine APA102C LEDs arranged in a 3x3 array. The 3x3 board can be daisy-chained with other Lumenati boards, allowing for multiple design options and formations. With the equipped 0.1" spaced pins, this Lumenati can also be installed into a breadboard for more prototyping applications. Additionally, we have labeled the APA102C LEDs on each board with numbers indicating their position in the sequence to help you write code more easily. We especially love using the Lumenati boards to give our flying race drones a bit of style and panache.

The APA102C addressable LEDs operate on +5V power input, as well as 0–5V logic levels for clock and data and employ a 2-wire communication protocol consisting of a clock line and a data line. While this requires one more wire than standard WS2812B LEDs, the advantage is that the communication with the LEDs becomes somewhat timing-independent, allowing you to run these directly off of a Raspberry Pi or other single-board computer that doesn't normally allow for a long, precisely timed data stream without the use of additional hardware.

FEATURES

- Dimensions: 34.7mm x 23.3mm x 3.2mm (1.4" x 0.9" x 0.12")
- Weight: 3.35g



Notice. This product requires other products in order to function properly.
[See essential products.](#)

Essentials	
SparkFun SAMD21 Mini Breakout	DEV-13664
SparkFun Logic Level Converter - Bi-Directional	BOB-12009
Wall Adapter Power Supply - 5.1V DC 2.5A (USB Micro-B)	TOL-13831
Soldering Iron - 30W (EU, 230VAC)	TOL-11650