



Chipsmall Limited consists of a professional team with an average of over 10 year of expertise in the distribution of electronic components. Based in Hongkong, we have already established firm and mutual-benefit business relationships with customers from,Europe,America and south Asia,supplying obsolete and hard-to-find components to meet their specific needs.

With the principle of “Quality Parts,Customers Priority,Honest Operation,and Considerate Service”,our business mainly focus on the distribution of electronic components. Line cards we deal with include Microchip,ALPS,ROHM,Xilinx,Pulse,ON,Everlight and Freescale. Main products comprise IC,Modules,Potentiometer,IC Socket,Relay,Connector.Our parts cover such applications as commercial,industrial, and automotives areas.

We are looking forward to setting up business relationship with you and hope to provide you with the best service and solution. Let us make a better world for our industry!



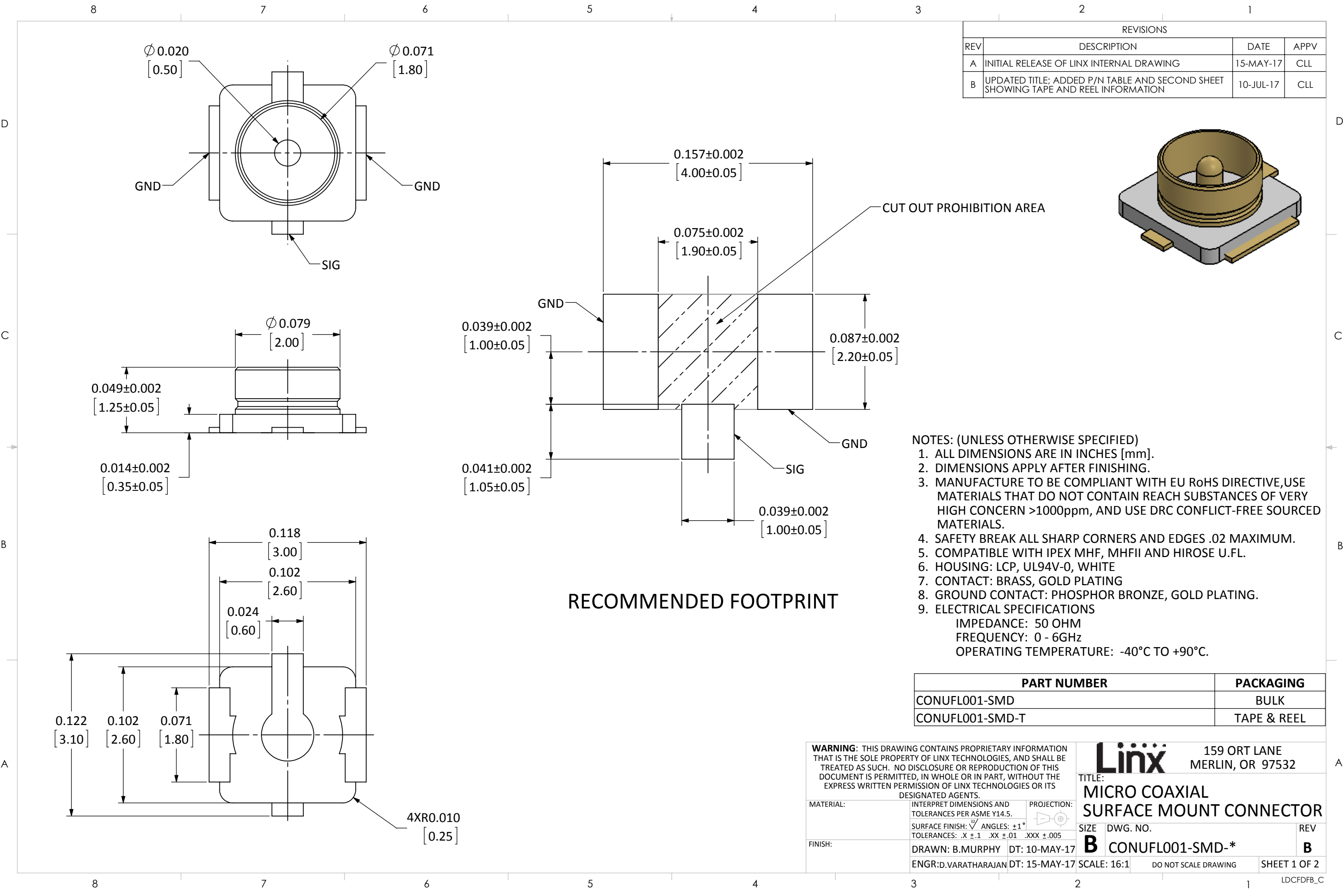
## Contact us

Tel: +86-755-8981 8866 Fax: +86-755-8427 6832

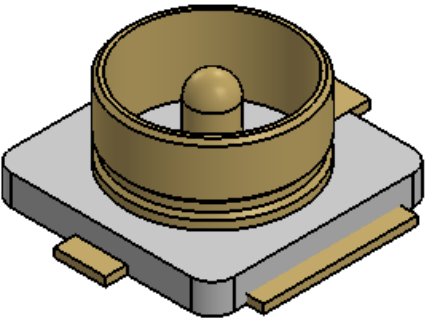
Email & Skype: [info@chipsmall.com](mailto:info@chipsmall.com) Web: [www.chipsmall.com](http://www.chipsmall.com)

Address: A1208, Overseas Decoration Building, #122 Zhenhua RD., Futian, Shenzhen, China





REVISIONS			
REV	DESCRIPTION	DATE	APPV
A	INITIAL RELEASE OF LINX INTERNAL DRAWING	15-MAY-17	CLL
B	UPDATED TITLE; ADDED P/N TABLE AND SECOND SHEET SHOWING TAPE AND REEL INFORMATION	10-JUL-17	CLL

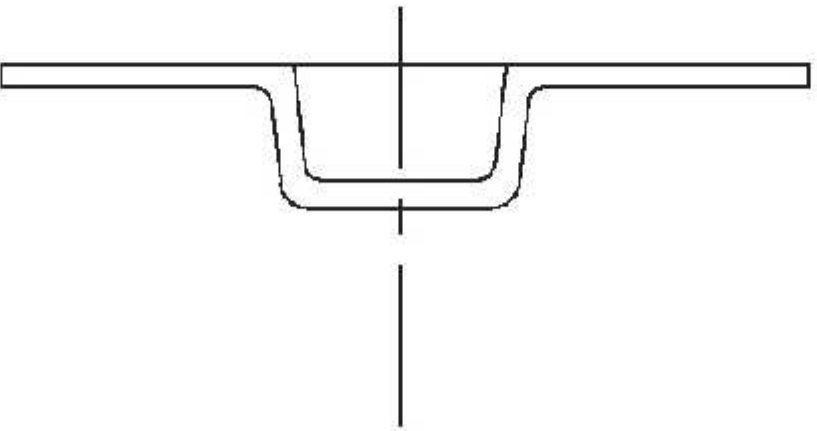
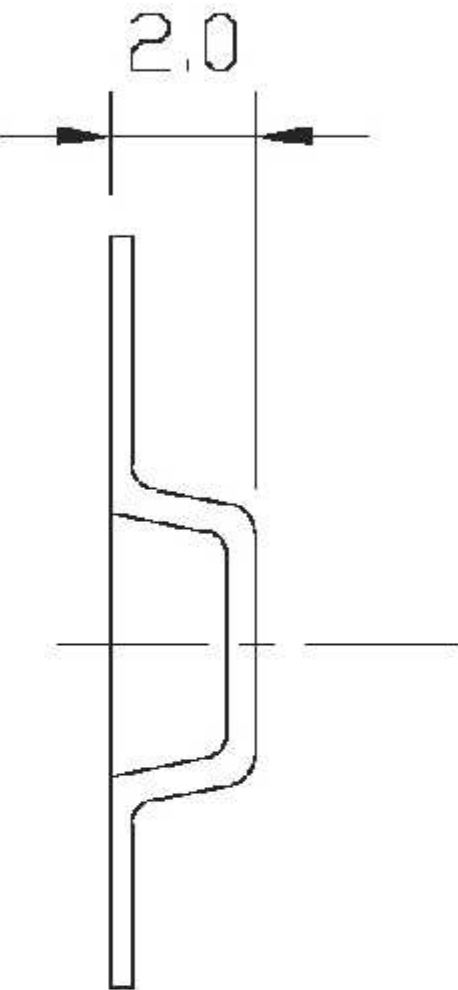
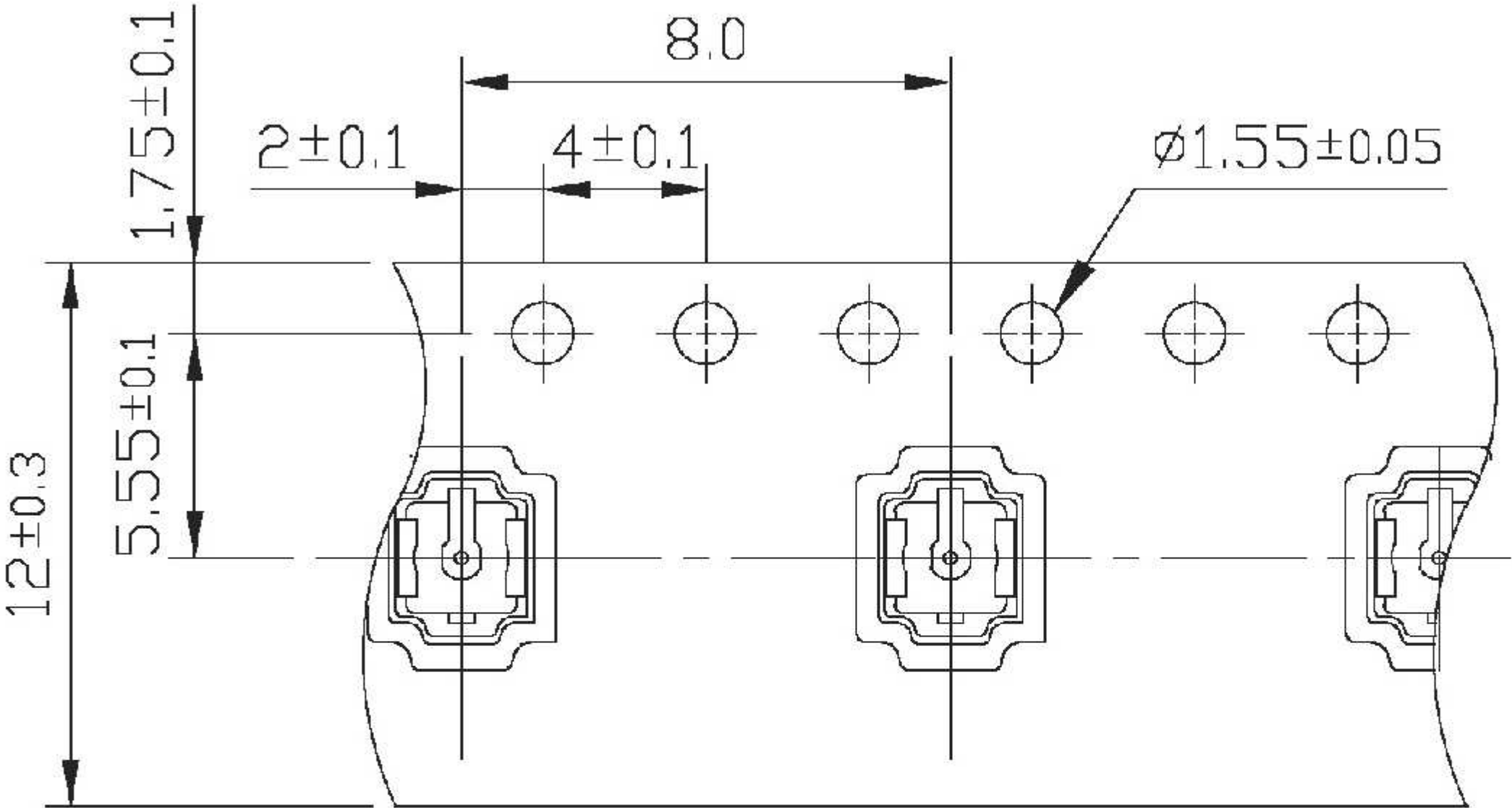


- NOTES: (UNLESS OTHERWISE SPECIFIED)
1. ALL DIMENSIONS ARE IN INCHES [mm].
  2. DIMENSIONS APPLY AFTER FINISHING.
  3. MANUFACTURE TO BE COMPLIANT WITH EU RoHS DIRECTIVE,USE MATERIALS THAT DO NOT CONTAIN REACH SUBSTANCES OF VERY HIGH CONCERN >1000ppm, AND USE DRC CONFLICT-FREE SOURCED MATERIALS.
  4. SAFETY BREAK ALL SHARP CORNERS AND EDGES .02 MAXIMUM.
  5. COMPATIBLE WITH IPEX MHF, MHFII AND HIROSE U.FL.
  6. HOUSING: LCP, UL94V-0, WHITE
  7. CONTACT: BRASS, GOLD PLATING
  8. GROUND CONTACT: PHOSPHOR BRONZE, GOLD PLATING.
  9. ELECTRICAL SPECIFICATIONS  
IMPEDANCE: 50 OHM  
FREQUENCY: 0 - 6GHz  
OPERATING TEMPERATURE: -40°C TO +90°C.

PART NUMBER	PACKAGING
CONUFL001-SMD	BULK
CONUFL001-SMD-T	TAPE & REEL

<b>WARNING:</b> THIS DRAWING CONTAINS PROPRIETARY INFORMATION THAT IS THE SOLE PROPERTY OF LINX TECHNOLOGIES, AND SHALL BE TREATED AS SUCH. NO DISCLOSURE OR REPRODUCTION OF THIS DOCUMENT IS PERMITTED, IN WHOLE OR IN PART, WITHOUT THE EXPRESS WRITTEN PERMISSION OF LINX TECHNOLOGIES OR ITS DESIGNATED AGENTS.		
MATERIAL:	INTERPRET DIMENSIONS AND TOLERANCES PER ASME Y14.5.	PROJECTION:
	SURFACE FINISH: $\sqrt{}$ ANGLES: $\pm 1^\circ$	
	TOLERANCES: .X $\pm .1$ .XX $\pm .01$ .XXX $\pm .005$	
FINISH:	DRAWN: B.MURPHY DT: 10-MAY-17	
	ENGR:D.VARATHARAJAN DT: 15-MAY-17	

<b>Linx</b>		159 ORT LANE MERLIN, OR 97532	
TITLE: <b>MICRO COAXIAL SURFACE MOUNT CONNECTOR</b>			
SIZE <b>B</b>	DWG. NO. <b>CONUFL001-SMD-*</b>		REV <b>B</b>
SCALE: 16:1		DO NOT SCALE DRAWING	SHEET 1 OF 2



NOTES:  
1. ALL DIMENSIONS ARE IN MILLIMETERS.  
2. TOLERANCES (UNLESS OTHERWISE SPECIFIED):  
.X ±0.1mm  
.XX ±0.05mm  
.XXX ±0.03mm

SIZE	DWG. NO.	REV
<b>A</b>	CONUFL001-SMD-T	<b>B</b>
SCALE: 16:1	DO NOT SCALE DRAWING	SHEET 2 OF 2