



Chipsmall Limited consists of a professional team with an average of over 10 year of expertise in the distribution of electronic components. Based in Hongkong, we have already established firm and mutual-benefit business relationships with customers from,Europe,America and south Asia,supplying obsolete and hard-to-find components to meet their specific needs.

With the principle of “Quality Parts,Customers Priority,Honest Operation,and Considerate Service”,our business mainly focus on the distribution of electronic components. Line cards we deal with include Microchip,ALPS,ROHM,Xilinx,Pulse,ON,Everlight and Freescale. Main products comprise IC,Modules,Potentiometer,IC Socket,Relay,Connector.Our parts cover such applications as commercial,industrial, and automotives areas.

We are looking forward to setting up business relationship with you and hope to provide you with the best service and solution. Let us make a better world for our industry!



Contact us

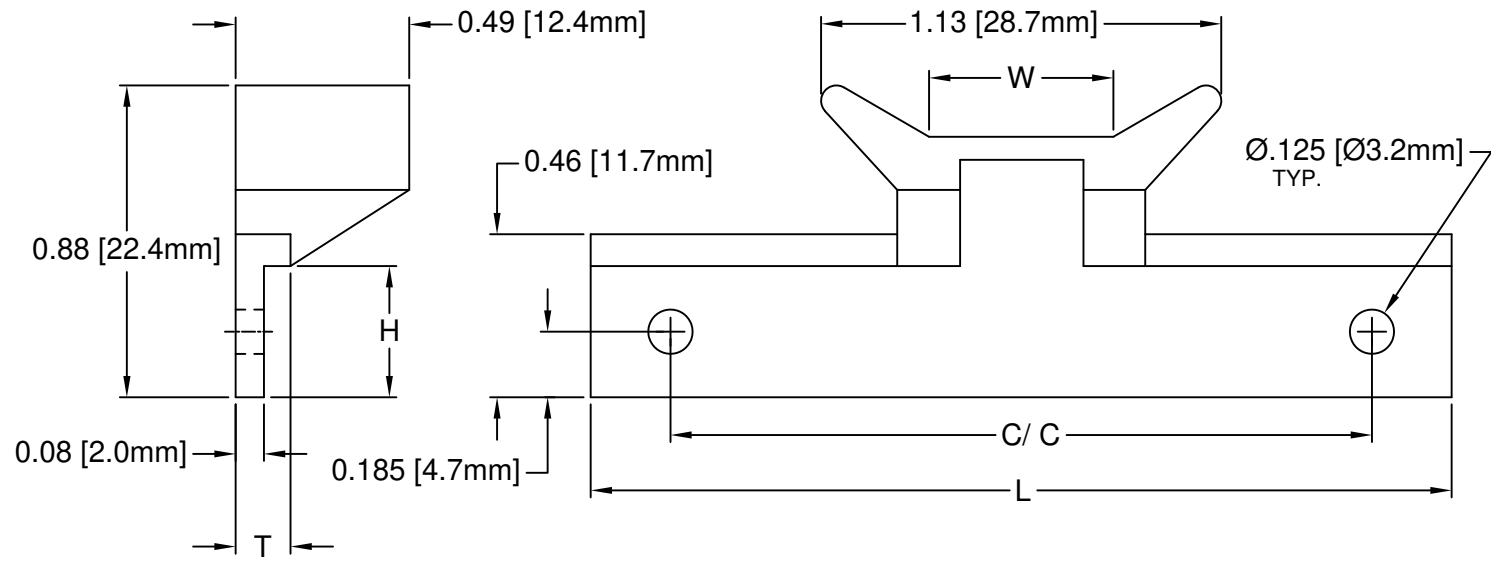
Tel: +86-755-8981 8866 Fax: +86-755-8427 6832

Email & Skype: info@chipsmall.com Web: www.chipsmall.com

Address: A1208, Overseas Decoration Building, #122 Zhenhua RD., Futian, Shenzhen, China


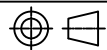


REV.	DESCRIPTION	DATE	APPROVED
A	Engineering Update w/o Changes	02/24/04	M. C.
B	Corrected P/Ns	09/05/06	M. C.
C	Added Dimension T & H to Table	11/13/13	G. W.
D	Added Note 4 & Color Options Sheet #2	05/16/16	J. C.



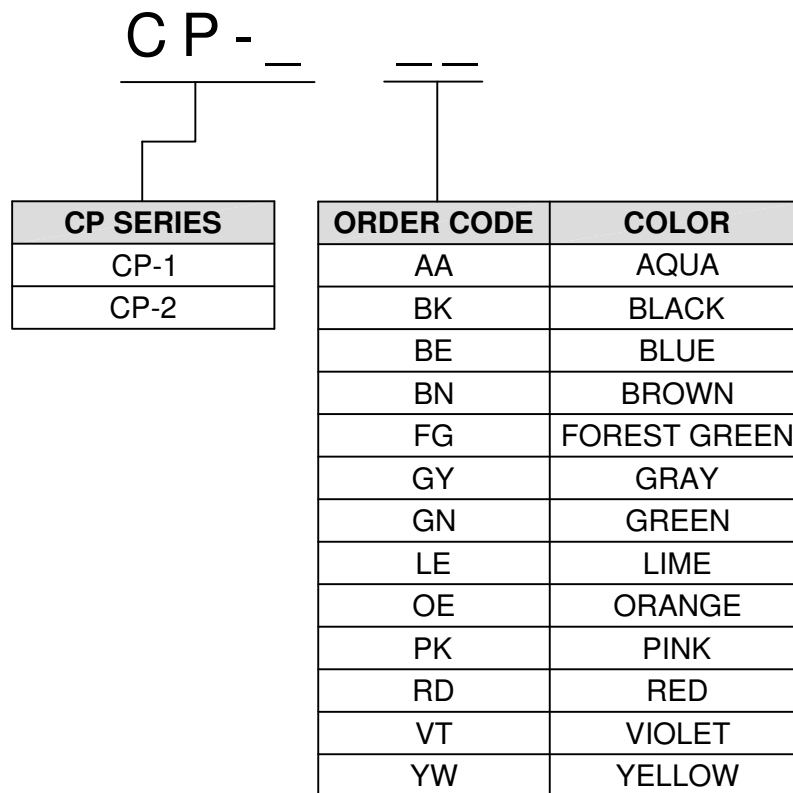
PART NO.	COLOR	L	W	T	H	C/C
CP-1 NT	NATURAL	1.30"(33.0mm)	.55"(14.0mm)	0.14"(3.5mm)	0.38"(9.6mm)	1.00"(25.4mm)
CP-1 WE	WHITE					
CP-1 XX	SEE S.#2					
CP-2 NT	NATURAL	2.43"(61.7mm)	.52"(13.2mm)	0.16"(3.9mm)	0.37"(9.4mm)	1.98"(50.3mm)
CP-2 WE	WHITE					
CP-2 XX	SEE S.#2					

3. MATERIAL: NYLON 6/6, 94V-2, WHITE.
2. MATERIAL: NYLON 6/6, 94V-2, NATURAL.
1. GENERAL SPECIFICATIONS: BIVAR MOLDED COMPONENT SPECIFICATION BV00-E101.

STANDARD TOLERANCE (UNLESS OTHERWISE SPECIFIED)		 BIVAR [®] 4 THOMAS, IRVINE, CA. 92618 TEL: (949) 951-8808 FAX: (949) 951-3974	
DECIMALS	ANGULAR		
.X ± .1	X° ± 1°	 TITLE: CIRCUIT BOARD CARD EJECTOR	
.XX ± .01			
.XXX ± .005			
DESIGNED: S. Irving	DATE: 01/01/00	PART NO: CP-1&2	
CHECKED: D. Green	DATE: 02/24/04	REVISION: D	
		CAGE CODE : 32559 SHEET # 1 OF 2	
CAD GENERATED DOCUMENT. DO NOT MEASURE DRAWING.			

OTHER AVAILABLE COLORS
 * SEE TABLE FOR ORDERING INFORMATION

REV.	DESCRIPTION	DATE	APPROVED
	SEE SHEET #1		



4. PARTS ARE DYED TO COLOR UPON REQUEST.

STANDARD TOLERANCE (UNLESS OTHERWISE SPECIFIED) <small>DECIMALS ANGULAR</small>		BIVAR [®] 4 THOMAS, IRVINE, CA. 92618 <small>TEL.: (949) 951-8808 FAX: (949) 951-3974</small>	
		TITLE: CIRCUIT BOARD CARD EJECTOR	
DESIGNED: S. Irving	DATE: 01/01/00	PART NO: CP-1&2	REVISION: D
CHECKED: D. Green	DATE: 02/24/04	CAGE CODE : 32559 SHEET # 2 OF 2 <small>CAD GENERATED DOCUMENT. DO NOT MEASURE DRAWING.</small>	