



Chipsmall Limited consists of a professional team with an average of over 10 year of expertise in the distribution of electronic components. Based in Hongkong, we have already established firm and mutual-benefit business relationships with customers from,Europe,America and south Asia,supplying obsolete and hard-to-find components to meet their specific needs.

With the principle of "Quality Parts,Customers Priority,Honest Operation,and Considerate Service",our business mainly focus on the distribution of electronic components. Line cards we deal with include Microchip,ALPS,ROHM,Xilinx,Pulse,ON,Everlight and Freescale. Main products comprise IC,Modules,Potentiometer,IC Socket,Relay,Connector.Our parts cover such applications as commercial,industrial, and automotives areas.

We are looking forward to setting up business relationship with you and hope to provide you with the best service and solution. Let us make a better world for our industry!



## Contact us

Tel: +86-755-8981 8866 Fax: +86-755-8427 6832

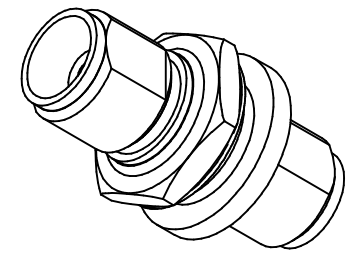
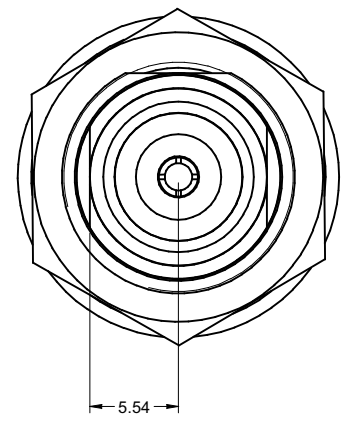
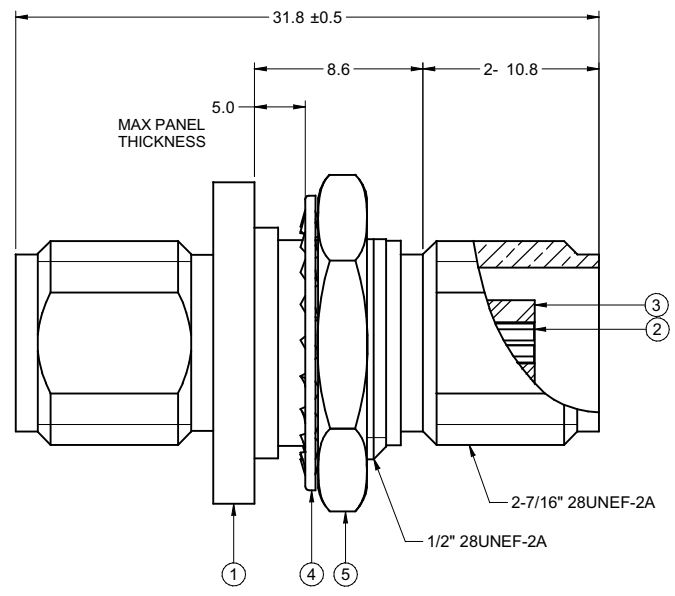
Email & Skype: info@chipsmall.com Web: www.chipsmall.com

Address: A1208, Overseas Decoration Building, #122 Zhenhua RD., Futian, Shenzhen, China



PART NUMBER	ITEM ① BODY	ITEM ② CONTACT	ITEM ③ INSULATOR	ITEM ④ LOCK WASHER	ITEM ⑤ HEX NUT
27-9067	BRASS NICKEL PLATED	BERYLLIUM Ni/Au PLATED	TPX	BRASS NICKEL PLATED	BRASS NICKEL PLATED

DRAWING NO. 27-9067	
REVISIONS	
01	OFFICIAL RELEASE 08-18-09 W U T Betty 2009.09.18 +08'00'



NOTES:  
1. TECHNICAL DETAIL: REFER TO EMERSON DOCUMENT P/N 28-0000

受控 CONTROLLED DOCUMENT					
编号 P/N	27-9067	版本 Rev	01	日期 Rel'd Date	SEP 17,09

TOLERANCE UNLESS OTHERWISE SPECIFIED	DRAWN BY VON.WANG	DATE 08-18-09
DECIMALS	CHECKED BY BETTY.YU	DATE 08-18-09
X	APPROVED BY THOMAS	DATE 08-18-09
X.X	U/M	mm
X.XX		
ANGLES		

EMERSON Network Power		Connectivity Solutions	
TITLE CPAD356 TNC(F-F) CHAS MNT 1/2"			
SHEET 1 OF 1	DRAWING NO. 27-9067	SIZE C	

THIS DRAWING WAS PRODUCED BY COMPUTER, DO NOT SCALE DRAWING OR UPDATE MANUALLY.

THIS DRAWING TO BE INTERPRETED PER ANSI Y 14.5M - 1994

COMPANY CONFIDENTIAL