



Chipsmall Limited consists of a professional team with an average of over 10 year of expertise in the distribution of electronic components. Based in Hongkong, we have already established firm and mutual-benefit business relationships with customers from,Europe,America and south Asia,supplying obsolete and hard-to-find components to meet their specific needs.

With the principle of "Quality Parts,Customers Priority,Honest Operation,and Considerate Service",our business mainly focus on the distribution of electronic components. Line cards we deal with include Microchip,ALPS,ROHM,Xilinx,Pulse,ON,Everlight and Freescale. Main products comprise IC,Modules,Potentiometer,IC Socket,Relay,Connector.Our parts cover such applications as commercial,industrial, and automotives areas.

We are looking forward to setting up business relationship with you and hope to provide you with the best service and solution. Let us make a better world for our industry!



## Contact us

Tel: +86-755-8981 8866 Fax: +86-755-8427 6832

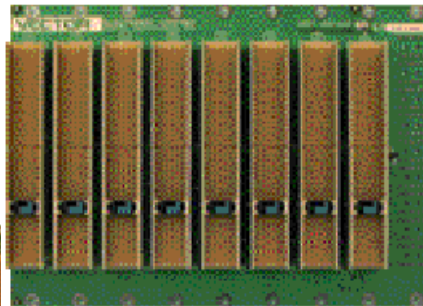
Email & Skype: info@chipsmall.com Web: www.chipsmall.com

Address: A1208, Overseas Decoration Building, #122 Zhenhua RD., Futian, Shenzhen, China

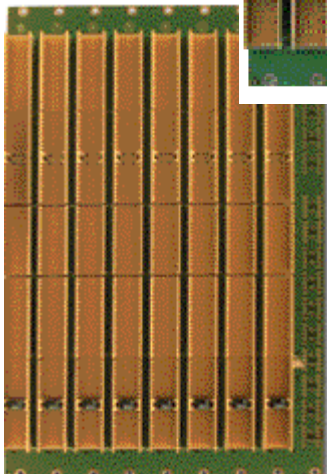




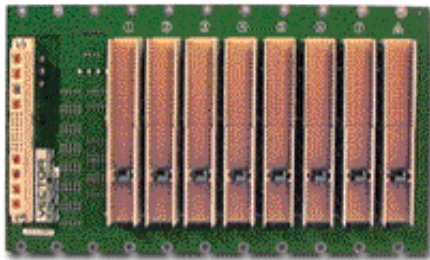
## cPCI® Backplanes for 3U and 6U Cards



3U cPCI backplane with 8 slots



6U cPCI backplane with 8 slots



3U cPCI backplane with 8 slots & M-DIN Power Supply Connector



6U cPCI backplane for horizontal card insertion  
4 P47 Power Supply Connectors shown

A wide variety of cPCI backplanes are available separately or integrated in Vector enclosures. cPCI backplanes for 3U and 6U PC cards range in size from 2 slots to 8 slots, supplying the requirement for low profile packaging to full 10U height enclosures. 2mm connector loading for front entry and rear I/O are standard features of all 6U backplanes.

All cPCI backplanes are specification compliant with PICMG 2.0 R2.1 and 3.0 and Hot Swap specification PICMG 2.1 R1.0 or greater. Power is applied to the boards through power taps with screw down lugs for embedded supplies, ATX connectors for low cost power supplies or integral power supply connectors for P47 or M-DIN cPCI power supplies.

### Features:

- \* Sizes: 2 to 8 slots
- \* Compliance with PICMG Specifications for 32 & 64 bit, 33 mHz & 66 mHz
- \* Hot Swap compliant for cPCI power supplies
- \* V I/O jumpers for +5 & +3.3V (user selectable)
- \* Cadmium yellow 3.3V & brilliant blue keys 5V supplied with each backplane
- \* Sense line for +5V and +3.3V
- \* Header for Signals EN, INH, DEG & FAL

Model No.	Size & No. of Slots	Description	Standard Assemblies Include
CPCIBP8-3-32	3U X 8 slots	32/ 64 bit, 33 mHz, right side control slot	Short tailed 2mm connectors on all P1 & P2 positions,
CPCIBP8-3L-32	3U x 8 slots	32 bit only, left side control slot	P1 short tail connectors, P2 long tail connector with shrouds for rear I/O
CPCIBP4-3-64	3U x 4 slots	64 bit, 66 mHz selectable, right side control slot	Short tail 2mm connectors on P1 & P2 positions
CPCIBP8-3-1	3U x 8 slots	32/ 64 bit with M DIN power connector, right side control slot	Short tail connectors on P1 & P2 positions 1 M-DIN power connector
CPCIBP8-6-64	6U x 8 slots	32/ 64 bit, 33 mHz, PICMG 2.0 R3.0	Short tail connectors on P1 & P2 positions, long tail connectors with shrouds on P3, P4, P5 positions