



Chipsmall Limited consists of a professional team with an average of over 10 year of expertise in the distribution of electronic components. Based in Hongkong, we have already established firm and mutual-benefit business relationships with customers from,Europe,America and south Asia,supplying obsolete and hard-to-find components to meet their specific needs.

With the principle of “Quality Parts,Customers Priority,Honest Operation,and Considerate Service”,our business mainly focus on the distribution of electronic components. Line cards we deal with include Microchip,ALPS,ROHM,Xilinx,Pulse,ON,Everlight and Freescale. Main products comprise IC,Modules,Potentiometer,IC Socket,Relay,Connector.Our parts cover such applications as commercial,industrial, and automotives areas.

We are looking forward to setting up business relationship with you and hope to provide you with the best service and solution. Let us make a better world for our industry!



Contact us

Tel: +86-755-8981 8866 Fax: +86-755-8427 6832

Email & Skype: info@chipsmall.com Web: www.chipsmall.com

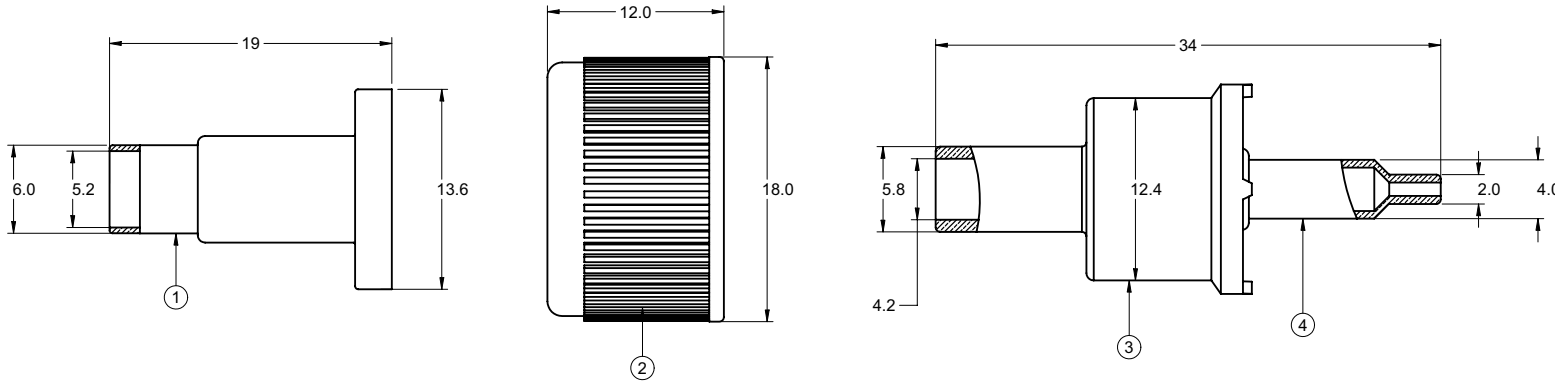
Address: A1208, Overseas Decoration Building, #122 Zhenhua RD., Futian, Shenzhen, China



	5		4		3		2		1
PART NUMBER	ITEM ① SLEEVE	ITEM ② NUT	ITEM ③ BODY	ITEM ④ CONTACT					
CPL-259-10	BRASS NICKEL PLATED	ZINE NICKEL PLATED	ZINE NICKEL PLATED	BRASS NICKEL PLATED					

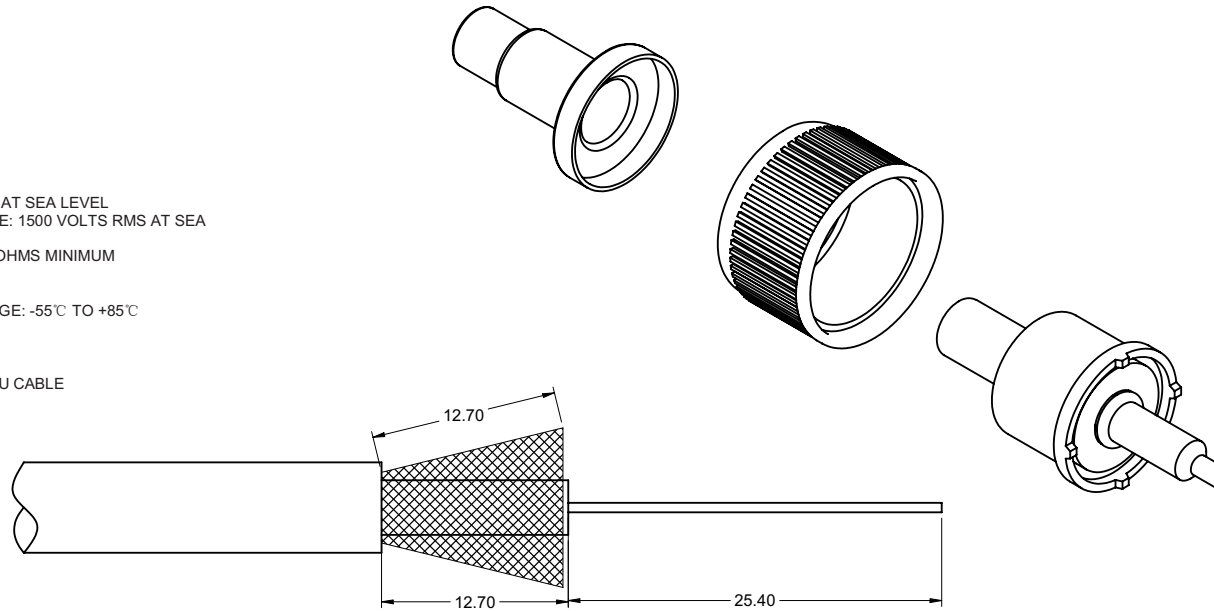
受控 CONTROLLED DOCUMENT					
编号 P/N	CPL-259-10	版本 Rev	0A	日期 Rel'd Date	May24,08

DRAWING NO. CPL-259-10					
REVISIONS					
RELEASE FOR QUTATION					
A	11-04-05	W	W	T	
<small>Thomas Chow 2005.12.23 09:23:47+18'00</small>					



NOTES:

- ELECTRICAL CHARACTERISTICS
 IMPEDANCE: NON-CONSTANT
 FREQUENCY RANGE: 0-500 MHZ
 WORKING VOLTAGE: 500 VOLTS RMS AT SEA LEVEL
 DIELECTRIC WITHSTANDING VOLTAGE: 1500 VOLTS RMS AT SEA LEVEL
 INSULATION RESISTANCE: 5000 MEGOHMS MINIMUM
- ENVIRONMENTAL CHARACTERISTICS
 RECOMMENDED TEMPERATURE RANGE: -55°C TO +85°C
- MECHANICAL CHARACTERISTICS
 DURABILITY: 500 CYCLES
 CABLE RETENTION: 20 LBS., RG-58 C/U CABLE



CABLE STRIP DIMENSIONS
ASSEMBLY INSTRUCTIONS ON SHEET 2

THIS DRAWING TO BE INTERPRETED
PER ANSI Y 14.5M - 1994
COMPANY CONFIDENTIAL

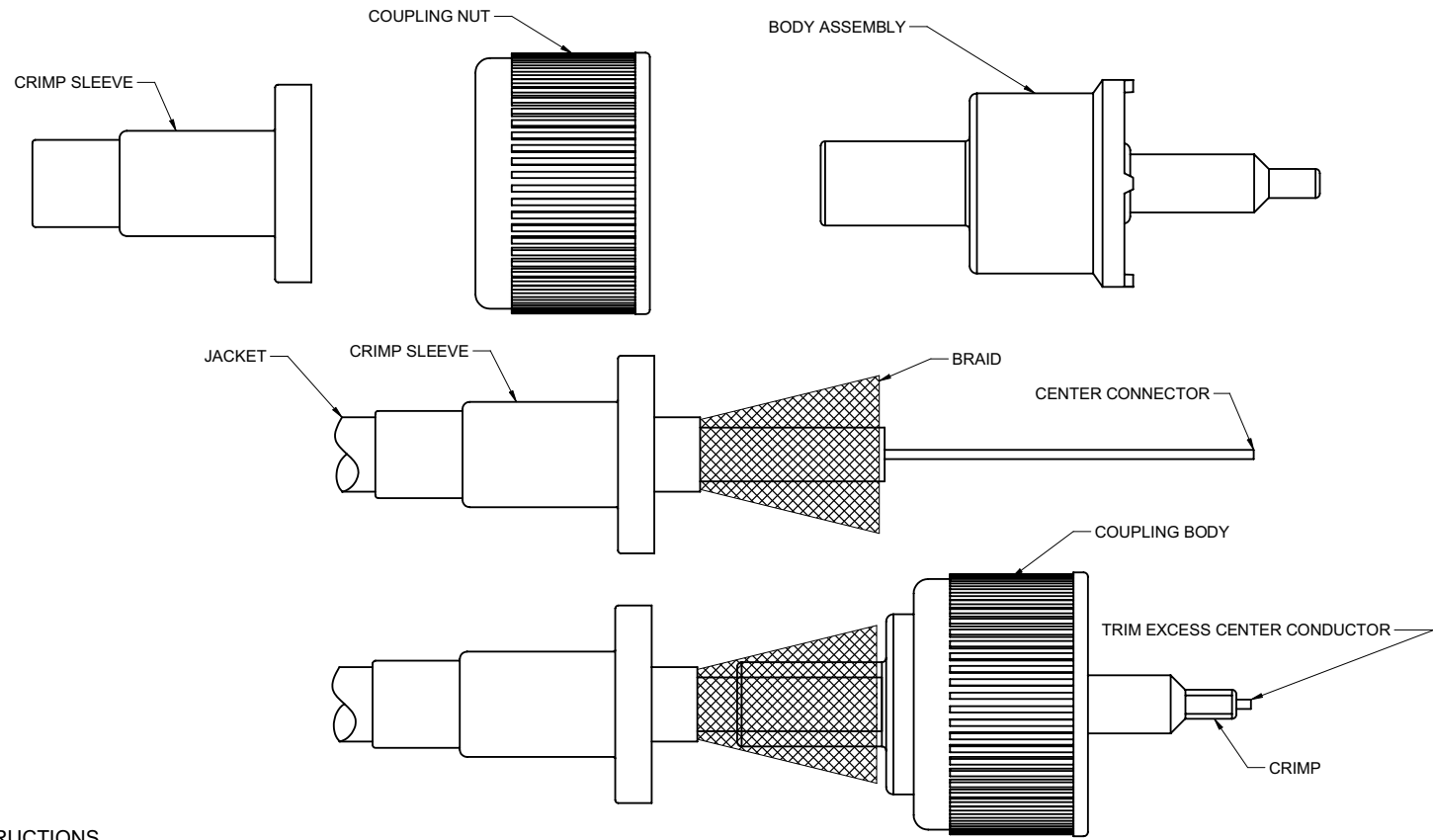
TOLERANCE UNLESS OTHERWISE SPECIFIED		DRAWN BY IVON.WANG	DATE 10-25-05
DECIMALS	mm	CHECKED BY LINDA.WU	DATE 11-04-05
X	± 0.5	APPROVED BY THOMAS	DATE 11-04-05
X.X	± 0.2	U/M	mm
X.XX	± 0.1		
ANGLES	± 0.5		

EMERSON Network Power		Connectivity Solutions	
TITLE UHF STRAIGHT CRIMP TYPE PLUG FOR RG-59 RG-62			

THIS DRAWING WAS PRODUCED BY COMPUTER, DO NOT SCALE DRAWING OR UPDATE MANUALLY.		SHEET 1 OF 2	DRAWING NO. CPL-259-10	SIZE C
--	--	-----------------	---------------------------	-----------

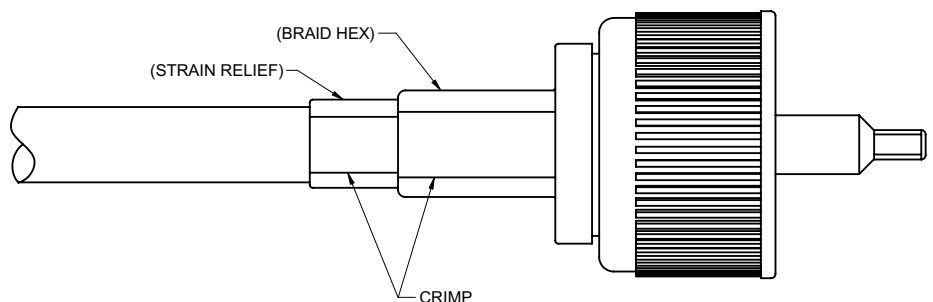
PART NUMBER	CABLE	WIRE GAUGE	WIRE DECIMAL	JACKET O.D.	CRIMP (BRAID HEX)	CRIMP (STRAIN RELIEF)	CONTACT CRIMP HEX	RECOMMENDED CRIMP TOOL
CPL-259-10	RG-59 PLENUM, RG-62	22	0.64	4.07-5.21	5.97	NONE	1.65	24-8857P

DRAWING NO.		CPL-259-10	
REVISIONS			
RELEASE FOR QUATION			
A	11-04-05	W	W T



ASSEMBLY INSTRUCTIONS

1. IDENTIFY CONNECTOR PARTS. (3 PIECE PARTS)
2. SLIDE CRIMP SLEEVE OVER CABLE AND STRIP CABLE TO DIMENSIONS SHOWN. DO NOT NICK CENTER CONDUCTOR DURING STRIP OPERATIONS.
3. SLIDE COUPLING NUT ONTO THE CONNECTOR BODY. THEN SLIDE THE CONNECTOR BODY OVER CABLE SO THAT THE CENTER CONDUCTOR EXTENDS THROUGH THE FRONT OF THE CONTACT. CRIMP OR SOLDER THE CONTACT AS SHOWN. TRIM AWAY THE CENTER CONDUCTOR EXTENDING PAST THE CONTACT.
4. ARRANGE BRAID UNIFORMLY AROUND CRIMP STEM. SLIDE CRIMP SLEEVE OVER BRAID AND CRIMP SECURELY USING RECOMMENDED CRIMP TOOL.



THIS DRAWING TO BE INTERPRETED PER ANSI Y 14.5M - 1994

COMPANY CONFIDENTIAL

受控 CONTROLLED DOCUMENT					
编号 P/N	CPL-259-10	版本 Rev	0A	日期 Rel'd Date	May24,08

TOLERANCE UNLESS OTHERWISE SPECIFIED		DRAWN BY	DATE
DECIMALS	mm	IVON.WANG	10-25-05
X	± 0.5	CHECKED BY	DATE
X.X	± 0.2	LINDA.WU	11-04-05
X.XX	± 0.1	APPROVED BY	DATE
ANGLES	± 0.5	THOMAS	11-04-05
	U/M	mm	

EMERSON Network Power		Connectivity Solutions	
TITLE			
UHF STRAIGHT CRIMP TYPE PLUG FOR RG-59 RG-62			
SHEET	DRAWING NO.	SIZE	
2 OF 2	CPL-259-10	C	

THIS DRAWING WAS PRODUCED BY COMPUTER, DO NOT SCALE DRAWING OR UPDATE MANUALLY.