



Chipsmall Limited consists of a professional team with an average of over 10 year of expertise in the distribution of electronic components. Based in Hongkong, we have already established firm and mutual-benefit business relationships with customers from,Europe,America and south Asia,supplying obsolete and hard-to-find components to meet their specific needs.

With the principle of “Quality Parts,Customers Priority,Honest Operation,and Considerate Service”,our business mainly focus on the distribution of electronic components. Line cards we deal with include Microchip,ALPS,ROHM,Xilinx,Pulse,ON,Everlight and Freescale. Main products comprise IC,Modules,Potentiometer,IC Socket,Relay,Connector.Our parts cover such applications as commercial,industrial, and automotives areas.

We are looking forward to setting up business relationship with you and hope to provide you with the best service and solution. Let us make a better world for our industry!



Contact us

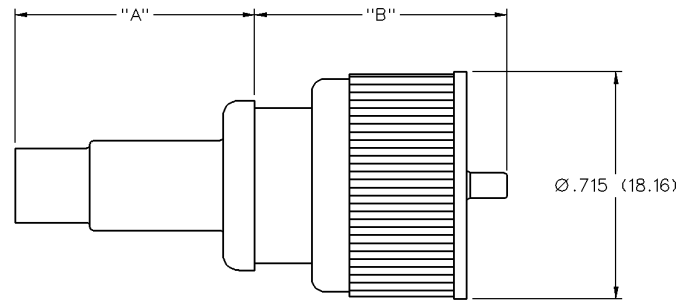
Tel: +86-755-8981 8866 Fax: +86-755-8427 6832

Email & Skype: info@chipsmall.com Web: www.chipsmall.com

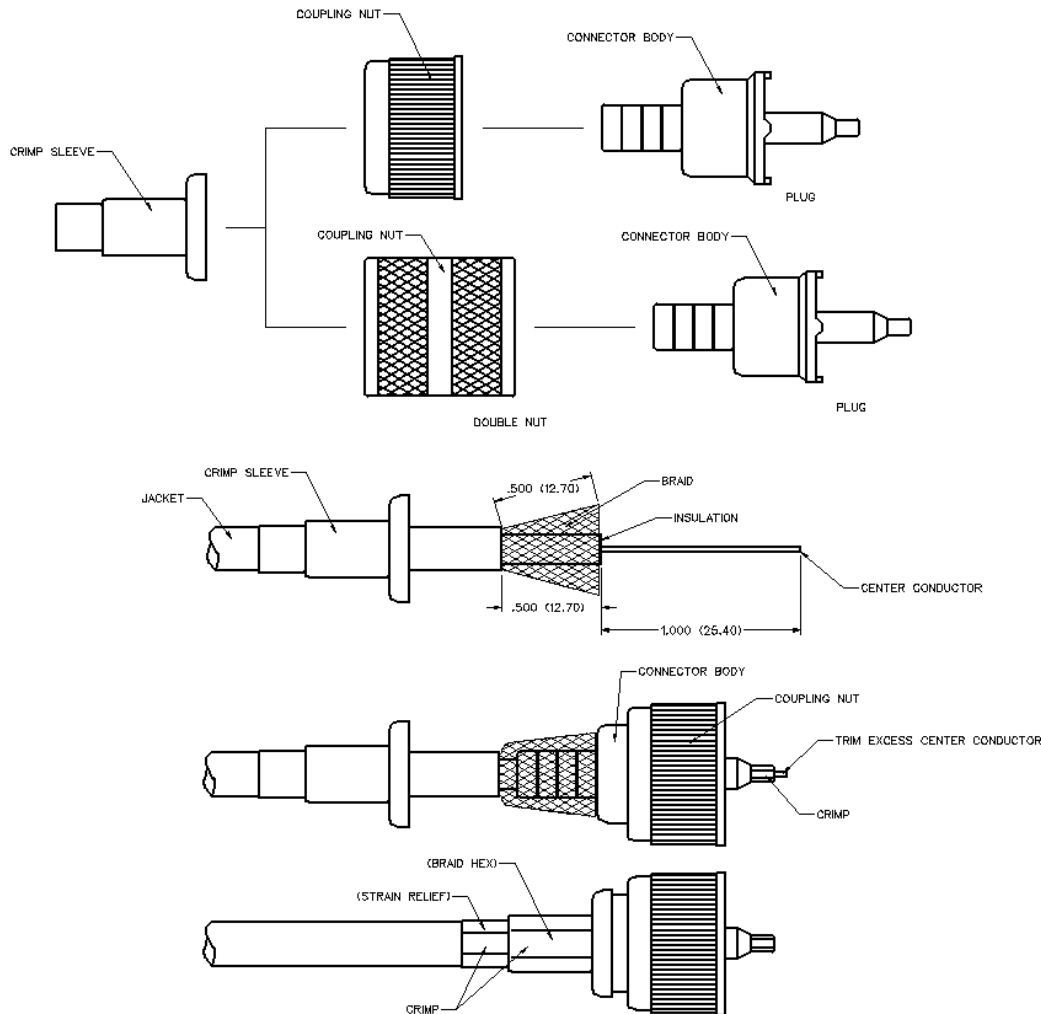
Address: A1208, Overseas Decoration Building, #122 Zhenhua RD., Futian, Shenzhen, China



UHF Straight Crimp Type Plug - Crimp Contact



| PART NUMBER | CABLE TYPE | "A" | "B" | WIRE GAUGE | WIRE DECIMAL | JACKET O.D. |
|-------------|------------|--------------|--------------|------------|--------------|---------------------------|
| CPL-259-8 | RG-8 | .694 (17.63) | .820 (20.83) | 13 | .085 (2.16) | .400 (10.16)-.410 (10.41) |



1. Identify connector parts. (3 piece parts)
 Except CPL-259-10 (1 Piece)

2. Slide crimp sleeve over cable and strip cable to dimensions shown. Do not nick center conductor during strip operations. (CPL-259-10: trim braid and insulation to .300 (7.62).

3. Slide coupling nut onto the connector body. Then slide the connector body over cable so that the center conductor extends through the front of the contact. Crimp the contact as shown. Trim away the center conductor extending past the contact. (CPL-259-10: fold braid onto jacket before sliding connector body onto cable.)

4. Arrange braid uniformly around crimp stem. Slide crimp sleeve over braid and crimp securely using recommended crimp tool.

| Part Number | Cable | Wire Gauge | Wire Decimal | Jacket O.D. | Crimp (Braid Hex) | Crimp (Strain Relief) | Contact Crimp Hex | Recommended Crimp Tool |
|-------------|-------|------------|--------------|---------------------------|-------------------|-----------------------|-------------------|------------------------|
| CPL-259-8 | RG-8 | 13 | .085 | .400 (10.06)-.410 (10.41) | .405 (10.29) | none | .110 (2.79) | 24-310 |

UHF Connectors

Specifications



INCHES (MILLIMETERS)
CUSTOMER DRAWINGS AVAILABLE UPON REQUEST

The UHF connectors are low cost, general purpose units designed for low frequency system applications. These commercial quality connectors are equipped with threaded coupling interfaces for secure and reliable connections. The Standard UHF and Mini UHF connectors are not intermateable.

STANDARD UHF

Electrical Characteristics

Impedance: Nonconstant

Frequency range: 0-500 MHz

Working voltage: 500 volts RMS at sea level

Dielectric withstanding voltage: 1500 volts RMS at sea level

Insulation resistance: 5000 megohms minimum

Environmental Characteristics

Recommended temperature range: -55°C to +85°C

Mechanical Characteristics

Durability: 500 cycles

Cable retention: 20 lbs., RG-58 C/U cable

Materials

Body and coupling nut: Zinc or brass

Contact: Beryllium copper or brass

Crimp Sleeve: Brass

Insulator: Delrin®

Plating: Body - Nickel

Crimp sleeve - Nickel

Contact - Gold or nickel