



Chipsmall Limited consists of a professional team with an average of over 10 year of expertise in the distribution of electronic components. Based in Hongkong, we have already established firm and mutual-benefit business relationships with customers from,Europe,America and south Asia,supplying obsolete and hard-to-find components to meet their specific needs.

With the principle of “Quality Parts,Customers Priority,Honest Operation,and Considerate Service”,our business mainly focus on the distribution of electronic components. Line cards we deal with include Microchip,ALPS,ROHM,Xilinx,Pulse,ON,Everlight and Freescale. Main products comprise IC,Modules,Potentiometer,IC Socket,Relay,Connector.Our parts cover such applications as commercial,industrial, and automotives areas.

We are looking forward to setting up business relationship with you and hope to provide you with the best service and solution. Let us make a better world for our industry!



## Contact us

Tel: +86-755-8981 8866 Fax: +86-755-8427 6832

Email & Skype: info@chipsmall.com Web: www.chipsmall.com

Address: A1208, Overseas Decoration Building, #122 Zhenhua RD., Futian, Shenzhen, China





### Mini-Com® Flush Mount Modular Patch Panels

- Rear mounted faceplates allow modules to be flush with front of patch panel
- Accept Mini-Com® Modules for UTP, fiber optic, and audio/video, which snap in and out for easy moves, adds, and changes
- Pre-printed numbers above each port for easy identification

- White write-on areas for port and/or panel identification
- Mount to standard EIA 19" racks or 23" racks with optional extender brackets
- Angled patch panels facilitate proper bend radius control and minimize the need for horizontal cable managers



CPPA24FMWBLY

PATENTED



CPPA48FMWBLY



CPP24FMWBLY

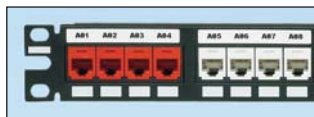


CPP48FMWBLY

Part Number	Part Description	No. of Rack Spaces <sup>^</sup>	Std. Pkg. Qty.	Std. Ctn. Qty.
<b>Mini-Com® Angled Flush Mount Modular Patch Panels</b>				
<b>CPPA24FMWBLY</b>	Angled 24-port flush mount patch panel supplied with rear mounted faceplates.	1	1	10
<b>CPPA48FMWBLY</b>	Angled 48-port flush mount patch panel supplied with rear mounted faceplates.	2	1	10
<b>Mini-Com® Flush Mount Modular Patch Panels</b>				
<b>CPP24FMWBLY</b>	24-port flush mount patch panel supplied with rear mounted faceplates.	1	1	10
<b>CPP48FMWBLY</b>	48-port flush mount patch panel supplied with rear mounted faceplates.	2	1	10

<sup>^</sup>One rack space = 1.75" (44.45mm).  
M6 and #12-24 mounting screws included.

### Component Labels for Mini-Com® Flush Mount Modular Patch Panels



Suggested Label Solutions for TIA/EIA-606-A Compliance				
Patch Panel Part Number	Laser/Ink Jet Desktop Printer Label	TDP43ME Thermal Transfer Desktop Printer Label	PanTher™ LS8E Hand-Held Printer Label	Cougar™ LS9 Hand-Held Printer Label
All Flush Mount Patch Panels on this page	C252X030FJJ	C252X030YPT	C252X030FJC	T031X000FJC-BK

For complete labeling solutions and product information, reference charts on pages O.1 – O.22 of SA-NCCB51.