



Chipsmall Limited consists of a professional team with an average of over 10 year of expertise in the distribution of electronic components. Based in Hongkong, we have already established firm and mutual-benefit business relationships with customers from,Europe,America and south Asia,supplying obsolete and hard-to-find components to meet their specific needs.

With the principle of “Quality Parts,Customers Priority,Honest Operation,and Considerate Service”,our business mainly focus on the distribution of electronic components. Line cards we deal with include Microchip,ALPS,ROHM,Xilinx,Pulse,ON,Everlight and Freescale. Main products comprise IC,Modules,Potentiometer,IC Socket,Relay,Connector.Our parts cover such applications as commercial,industrial, and automotives areas.

We are looking forward to setting up business relationship with you and hope to provide you with the best service and solution. Let us make a better world for our industry!



Contact us

Tel: +86-755-8981 8866 Fax: +86-755-8427 6832

Email & Skype: info@chipsmall.com Web: www.chipsmall.com

Address: A1208, Overseas Decoration Building, #122 Zhenhua RD., Futian, Shenzhen, China



Split Core Current Transformer

CR3100 Series



CR3109-1500



CR3110-3000



CR3111-3000



CR3113-2000

PART NUMBERS

CR3109 - 1500	30 AMP
CR3110 - 3000	75 AMP
CR3111 - 3000	100 AMP
CR3113 - 2000	150 AMP

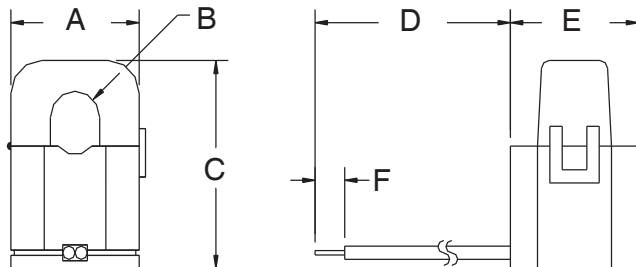
SPLIT CORE CURRENT TRANSFORMERS

Part Number	I _{max}	V _{max} RMS	T _e (typ.)	DCR Ω	Frequency
CR3109-1500	30	5	1510	187	20 - 1 KHz
CR3110-3000	75	15	3100	515	20 - 1 KHz
CR3111-3000	100	19	3150	390	20 - 1 KHz
CR3113-2000	150	16	2125	58	20 - 1 KHz

I_p = Maximum Input Current to be linearly sensed V_{max} = Maximum Voltage (Saturation) CT will develop

T_e = Effective turns ratio including losses (All Specifications tested at 60 Hz)

OUTLINE DRAWING



Part Number	A	B	C	D	E	F
CR3109-1500	0.76 (19.2)	0.19 (4.90)	1.24 (31.5)	6.10 (155)	0.82 (20.8)	0.20 (5.08)
CR3110-3000	1.00 (25.5)	0.40 (10.2)	1.57 (40.0)	5.91 (150)	1.04 (26.5)	0.24 (6.10)
CR3111-3000	1.24 (31.4)	0.62 (15.7)	1.77 (45.0)	6.10 (155)	1.22 (31.0)	0.20 (5.08)
CR3113-2000	2.68 (68.7)	0.98 (24.9)	2.56 (65.0)	118 (3000)	0.72 (18.4)	0.20 (5.08)

The **CR3100** Series Split Core Current Transformer is designed to provide a low cost method to monitoring electrical current. A unique hinge and locking snap allows attachment without interrupting the current-carrying wire. High secondary turn will develop signals up to 10.0 VAC across a burden resistor.

Applications

- Portable Instruments
- Sub-Metering
- Monitor Motor Loads

Features

- Small Size
- Low Cost
- High Secondary Turns
- Secure Locking Hinge

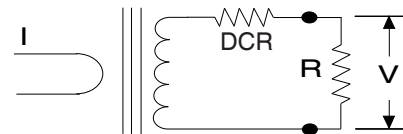
Specifications

Maximum Continuous Primary Current	4 X I _r
Insulation Voltage	3500 Vac/1min
Storage Temp.	-45°C thru +85°C
Operating Temp.	-40°C thru +65 °C

Regulatory Agencies



CR3110-3000 ONLY



$$V = \frac{I \times R}{T_e} \quad V_L = V_{max} - \left[\frac{I \times DCR}{T_e} \right]$$

For best linearity, choose R such that V < 0.8 V_L

