



Chipsmall Limited consists of a professional team with an average of over 10 year of expertise in the distribution of electronic components. Based in Hongkong, we have already established firm and mutual-benefit business relationships with customers from,Europe,America and south Asia,supplying obsolete and hard-to-find components to meet their specific needs.

With the principle of “Quality Parts,Customers Priority,Honest Operation,and Considerate Service”,our business mainly focus on the distribution of electronic components. Line cards we deal with include Microchip,ALPS,ROHM,Xilinx,Pulse,ON,Everlight and Freescale. Main products comprise IC,Modules,Potentiometer,IC Socket,Relay,Connector.Our parts cover such applications as commercial,industrial, and automotives areas.

We are looking forward to setting up business relationship with you and hope to provide you with the best service and solution. Let us make a better world for our industry!



## Contact us

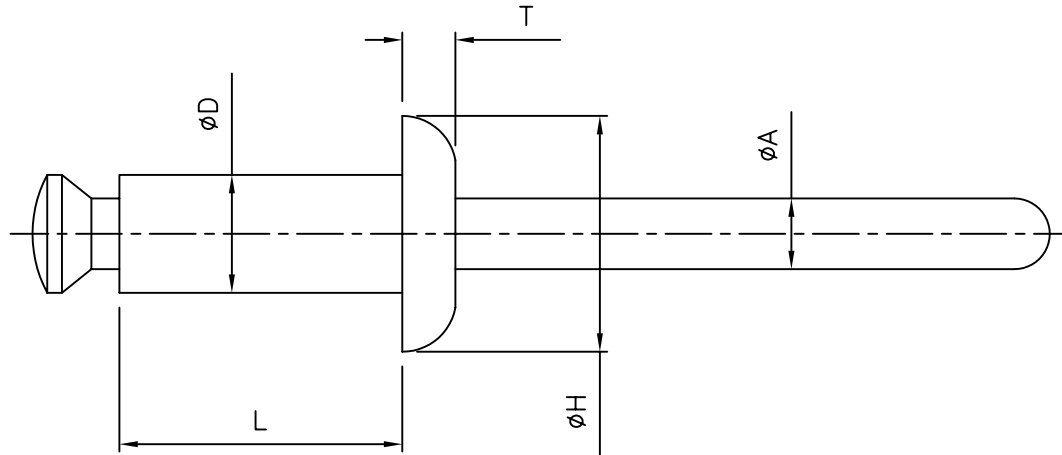
Tel: +86-755-8981 8866 Fax: +86-755-8427 6832

Email & Skype: info@chipsmall.com Web: www.chipsmall.com

Address: A1208, Overseas Decoration Building, #122 Zhenhua RD., Futian, Shenzhen, China



ISSUE No	REVISION	DATE	CHKD
A	NEW DWG	061000	JPM
BSCN 2001-094 021001			JPM



CR32-1-Y	3.3	1.0-4.0	3.2	6.4	6.4	1.4	2.1	12kg	20kg	1000
CR32-2-Y	3.3	4.0-7.0	3.2	9.6	6.4	1.4	2.1	12kg	20kg	1000
CR32-3-Y	3.3	7.0-10.0	3.2	12.7	6.4	1.4	2.1	12kg	20kg	1000
CR40-1-Y	4.1	1.0-4.0	4.0	6.4	8.0	1.8	2.4	18kg	25kg	1000
CR40-2-Y	4.1	4.0-7.0	4.0	9.6	8.0	1.8	2.4	18kg	25kg	1000
CR40-3-Y	4.1	7.0-10.0	4.0	12.7	8.0	1.8	2.4	18kg	25kg	1000
CR48-1-Y	4.9	1.5 - 5.0	4.8	8.0	9.6	2.0	2.8	28kg	40kg	500
CR48-2-Y	4.9	5.0 - 8.0	4.8	11.2	9.6	2.0	2.8	28kg	40kg	500
CR48-3-Y	4.9	8.0 - 11.0	4.8	14.4	9.6	2.0	2.8	28kg	40kg	500
CR56-1-Y	5.7	2.0 - 5.5	5.6	9.6	12.0	2.2	3.4	40kg	65kg	500
CR56-2-Y	5.7	5.5 - 8.5	5.6	12.7	12.0	2.2	3.4	40kg	65kg	500
CR56-3-Y	5.7	8.5 - 12.0	5.6	15.9	12.0	2.2	3.4	40kg	65kg	500
PART No.	MOUNTING HOLE DIA.	PANEL THICKNESS	ØD	L	ØH	T	ØA	TENSILE STRENGTH (yield)	SHEAR STRENGTH	STANDARD PACK QUANTITY

NOTES:

MATERIALS: RIVET - NYLON 6 (RMS-106)  
 MANDREL - POLYCARBONATE (RMS-107)  
 COLOURS: BLACK-1, WHITE-2, GREY-3, BEIGE-4

<small>INFORMATION CONTAINED IN THIS DOCUMENT IS CONFIDENTIAL TO RICHCO INTERNATIONAL COMPANY AND MAY NOT BE DISCLOSED OR REPRODUCED IN WHOLE OR PART WITHOUT THEIR WRITTEN CONSENT</small>		DRN	MATERIAL: SEE NOTE	
PART DESIGNED IN METRIC / IMPERIAL		JPM	TITLE CLINCH RIVETS	
TOLERANCES -UNLESS OTHERWISE STATED		CHKD PG		
1 PLACE ± 0.25		APPD	DESCRIPTION	SIZE
2 PLACE ±		PTG	CRXX-X-Y	A4
ANGLES ± -- °		SCALE	DRG No	SHEET No
		NTS	380-1001	1 of 1
				DATE
				061000

