



Chipsmall Limited consists of a professional team with an average of over 10 year of expertise in the distribution of electronic components. Based in Hongkong, we have already established firm and mutual-benefit business relationships with customers from,Europe,America and south Asia,supplying obsolete and hard-to-find components to meet their specific needs.

With the principle of “Quality Parts,Customers Priority,Honest Operation,and Considerate Service”,our business mainly focus on the distribution of electronic components. Line cards we deal with include Microchip,ALPS,ROHM,Xilinx,Pulse,ON,Everlight and Freescale. Main products comprise IC,Modules,Potentiometer,IC Socket,Relay,Connector.Our parts cover such applications as commercial,industrial, and automotives areas.

We are looking forward to setting up business relationship with you and hope to provide you with the best service and solution. Let us make a better world for our industry!



Contact us

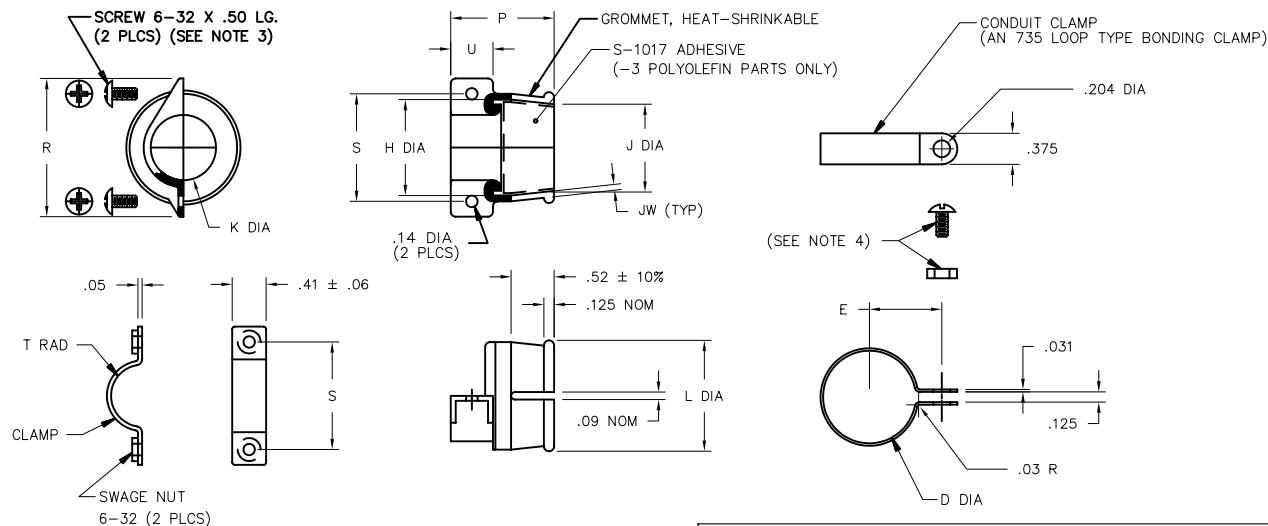
Tel: +86-755-8981 8866 Fax: +86-755-8427 6832

Email & Skype: info@chipsmall.com Web: www.chipsmall.com

Address: A1208, Overseas Decoration Building, #122 Zhenhua RD., Futian, Shenzhen, China



REVISIONS		
LTR	DESCRIPTION	DATE
A	ECO-08-007623	03/26/2008



NOTES

- ALL DIMENSIONS ARE IN INCHES.
- DIMENSIONS APPEARING IN TABLE ARE AS FOLLOWS:
a - AS SUPPLIED
b - AFTER UNRESTRICTED RECOVERY
- MATERIAL:
GROMMET: SEE ORDERING INFORMATION.
CLAMP: ALUMINUM ALLOY 6061-T4
SCREW: 6-32 X .50, ROUND HEAD, PHILLIPS, STD. STEEL PER NAS 601-8P, CADMIUM PLATE
- CONDUIT CLAMP:
LOCKNUT, MS21042-03 AND SCREW (10-32 X .50 LG) PER NAS 603 WILL BE SUPPLIED WITH CLAMP.
- FOR SHORTER LENGTH SCREW (10-32 X .25 LG) SEE CUSTOMER DRAWING 203A4XX-X-02.

TABLE OF DIMENSIONS

PART NUMBER	FITS CONDUIT SIZE	H		J		K	L	P	R	S	T	JW	U	D	E	AN735 DASH NO.
		+5% -0% a	±5% b	MIN a	MAX b	±12% a & b	±10% b	±10% b	±10% b	±10% b	±5% b	±20% b	±10% b	REF b	REF b	
203A411	1/2	.51	.51	.53	.47	.33	.86	1.25	1.17	.80	.15	.07	.51	.62	19/32	-10
203A421	5/8	.64	.64	.65	.59	.45	.98	1.25	1.30	.93	.22	.07	.51	.75	21/32	-12
203A431	3/4	.76	.76	.78	.72	.58	1.09	1.25	1.42	1.05	.28	.07	.51	.88	23/32	-14
203A436	7/8	.89	.89	.90	.84	.70	1.23	1.25	1.54	1.17	.34	.07	.51	1.00	13/16	-16
203A442	1	1.01	1.01	1.02	.95	.79	1.34	1.25	1.67	1.30	.38	.07	.51	1.12	7/8	-18
203A452	1 1/4	1.30	1.26	1.30	1.20	1.02	1.59	1.25	1.97	1.60	.51	.07	.51	1.38	1	-22
203A462	1 1/2	1.51	1.51	1.55	1.48	1.29	1.87	1.25	2.17	1.80	.63	.07	.51	1.62	1 1/8	-26

If this document is printed it becomes uncontrolled. Check for the latest revision

CUSTOMER DRAWING

UNLESS OTHERWISE SPECIFIED
DIMENSIONS ARE INCHES.
METRIC DIMENSIONS ARE IN
BRACKETS.

DECIMAL TOLERANCES

.XXX ± 0.005 [0.13 mm]
.XX ± 0.01 [0.25 mm]
.X ± 0.1 [0.50 mm]

ANGLE TOLERANCE

.X ± 1 DEG.

DRAWN

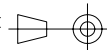
UNGUYEN

DATE

03/26/2008

RPN

THIRD ANGLE
PROJECTION



Tyco Electronics

Raychem Molded Parts
305 Constitution Dr
Menlo Park, CA 94025

TITLE

END GROMMET,
CONDUIT

SIZE

B

CODE IDENT. NO.

06090

DWG. NO.

203A4XX-X-03

© 2008 Tyco Electronics Corporation. All rights reserved.

DO NOT SCALE THIS DRAWING

SHEET 1 OF 2

COMPATIBILITY CHART					
MATERIAL DASH NO.	MATERIAL DESCRIPTION	RT SPEC	COATING SLASH NO.	COATING S NO.	COATING DESCRIPTION
-3	SEMI-RIGID POLYOLEFIN	RT-301	/42	S-1017	ADHESIVE
-12	*VITON, FLEXIBLE	RT-1312	N/A		

*VITON IS A REGISTERED TRADE MARK OF DUPONT

ORDERING INFORMATION

203A4XX

-XX

-03

/XX

BASE PART NUMBER

MATERIAL DASH NUMBER
(SEE COMPATIBILITY CHART)

MODIFICATION NUMBER

ADHESIVE SLASH NUMBER
(SEE COMPATIBILITY CHART)

If this document is printed it becomes uncontrolled. Check for the latest revision

CUSTOMER DRAWING

SIZE B	DWG. NO. 06090	REV A	DWG. NO. 203A4XX-X-03
DO NOT SCALE THIS DRAWING			SHEET 2 OF 2