



Chipsmall Limited consists of a professional team with an average of over 10 year of expertise in the distribution of electronic components. Based in Hongkong, we have already established firm and mutual-benefit business relationships with customers from,Europe,America and south Asia,supplying obsolete and hard-to-find components to meet their specific needs.

With the principle of "Quality Parts,Customers Priority,Honest Operation,and Considerate Service",our business mainly focus on the distribution of electronic components. Line cards we deal with include Microchip,ALPS,ROHM,Xilinx,Pulse,ON,Everlight and Freescale. Main products comprise IC,Modules,Potentiometer,IC Socket,Relay,Connector.Our parts cover such applications as commercial,industrial, and automotives areas.

We are looking forward to setting up business relationship with you and hope to provide you with the best service and solution. Let us make a better world for our industry!



## Contact us

Tel: +86-755-8981 8866 Fax: +86-755-8427 6832

Email & Skype: info@chipsmall.com Web: www.chipsmall.com

Address: A1208, Overseas Decoration Building, #122 Zhenhua RD., Futian, Shenzhen, China





# CS-044 3.2x2.5mm Crystal Resonator

# CONNOR WINFIELD



2111 Comprehensive Drive

Aurora, Illinois 60505

Phone: 630-851-4722

Fax: 630-851-5040

www.conwin.com

US Headquarters:

630-851-4722

European Headquarters:

+353-61-472221

## Description:

The Connor-Winfield model CS-044 is a 54MHz fundamental mode, AT-cut crystal in a 3.2x2.5mm surface mount package. The CS-044 is designed to be used as a reference crystal in synthesizer applications.

## Features:

- Frequency: 54.0 MHz
- Frequency Calibration: +/-15 ppm
- Frequency Stability: +/-25 ppm
- Temperature Range: -40 to 85°C
- Surface Mount Package
- Tape and Reel Packaging
- RoHS Compliant / Lead Free ✓RoHS

## Electrical Specifications

Parameter	Minimum	Nominal	Maximum	Units	Notes
Output Frequency (Fo)		54.0		MHz	
Frequency Calibration (@25°C)	-15		15	ppm	
Frequency Stability vs. Change in Temperature (Referenced to the frequency measured @25°C)	-25		25	ppm	
Operating Temperature Range:	-40		85	°C	
Operation Mode		Fundamental			
Cut		AT Cut			
Aging	-1		1	ppm/Year	
Shunt Capacitance: (Co)	-		2.0	pF	
Load Capacitance: (CL)		8		pF	
Equivalent Series Resistance @ 25 °C:			20	Ohms	
Drive Level		10	200	uW	
Insulation Resistance		500		Mohm	@ 100 Vdc
Storage Temperature:	-40		95	°C	

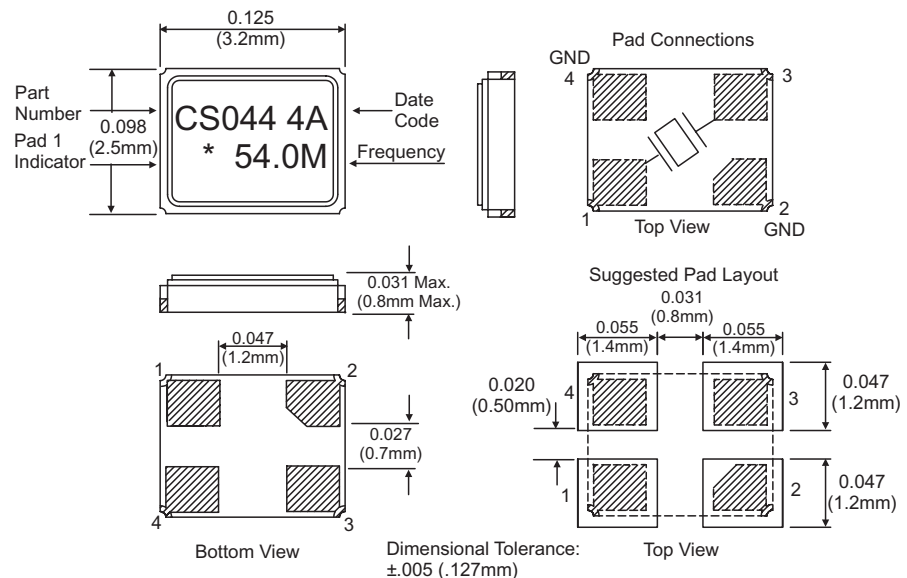
## Package Characteristics

Package	Hermetically sealed ceramic 3.2x2.5mm SMD Package.
Leakage	0.01ppm atm, cc/sec. maximum

## Ordering Information

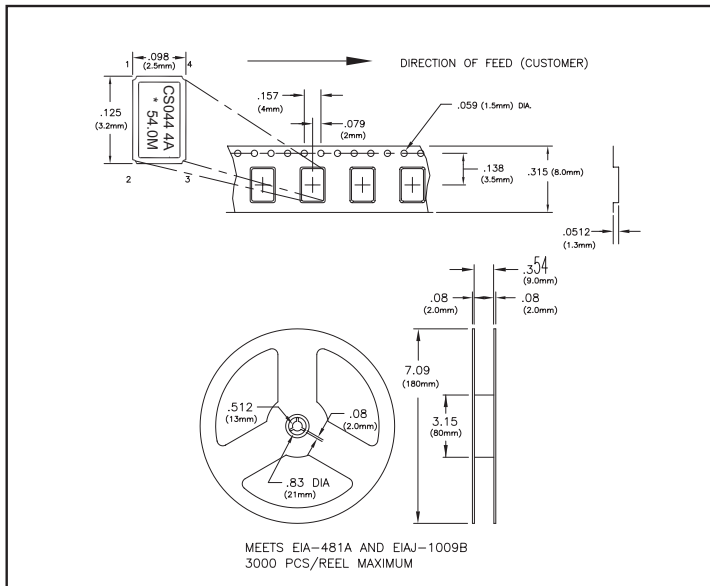
CS-044-054.0M

## Package Outline

Bulletin **Xt390**Page **1 of 2**Revision **02**Date **03 Aug 2015**



## Tape and Reel Information



## Date Code Information

LASER: 2 Character Date Code

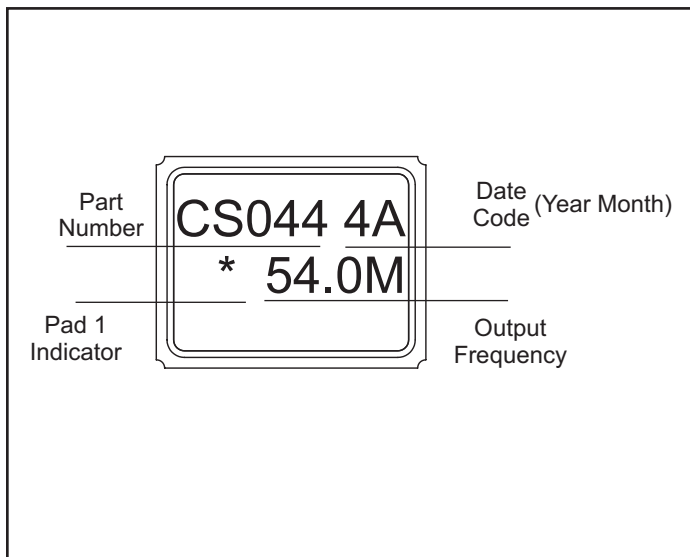
Year Code	Month Code
3 = 2013	A = January
4 = 2014	B = February
5 = 2015	C = March
6 = 2016	D = April
7 = 2017	E = May
	F = June
	G = July
	H = August
	J = September
	K = October
	M = November
	N = December

Date Code Example:

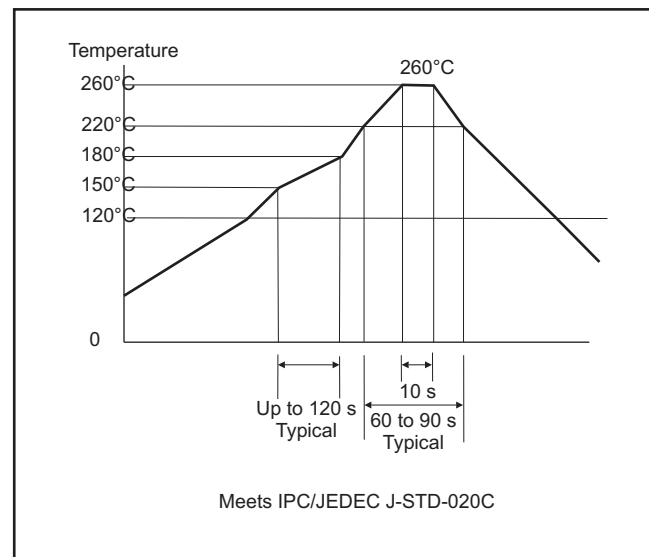
3J

3= 2013, J = September

## Marking Information



## Solder Profile



## Revision History

Revision	Date	Revision.
00	01/14/14	New Release
01	07/08/14	Update to Electrical Specs
02	08/03/15	Update to Electrical Specs and Digi-Key

Bulletin	Xt390
Page	2 of 2
Revision	02
Date	03 Aug 2015